



Goldieslie Close,
Sutton Coldfield, B73 5PS

£240,000

£240,000



This well presented two bedroom semi detached bungalow is ideally located in this charming and convenient development offering excellent accommodation for the over 60's.

Benefiting from on site management and intercom system and being within easy reach of many sought after amenities this property must be viewed to be fully appreciated.

Accessed via a hallway with storage the lay out comprises a good sized living room, fitted kitchen, two bedrooms and bathroom with walk in bath along with road parking and enclosed low maintenance garden.





Property Specification

SEMI-DETACHED RETIREMENT BUNGALOW
EXCLUSIVE DEVELOPMENT FOR THE OVER SIXTIES
ON SITE MANAGER AND EMERGENCY INTERCOM SYSTEM
COMMUNAL MEETING ROOM
GENEROUS LOUNGE

Porch

Living Room 4.60m (15'1") x 3.25m (10'8")

Kitchen 3.58m (11'9") x 2.59m (8'6")

Inner Hallway

Bedroom 1 3.94m (12'11") x 3.10m (10'2") max

Bedroom 2 2.79m (9'2") x 2.19m (7'2")

Bathroom

Agent's Note:

Every care has been taken with the preparation of these Sales Particulars but they are for general guidance only and complete accuracy cannot be guaranteed. If there is any point which is of particular importance, professional verification should be sought. The mention of any fixtures, fittings and/or appliances does not imply they are in full efficient working order as they have not been tested. All dimensions are approximate. Photographs are reproduced for general information and it cannot be inferred that any item shown is included in the sale. These Sales Particulars do not constitute a contract or part of a contract.
Came on the market: 2nd May 2024

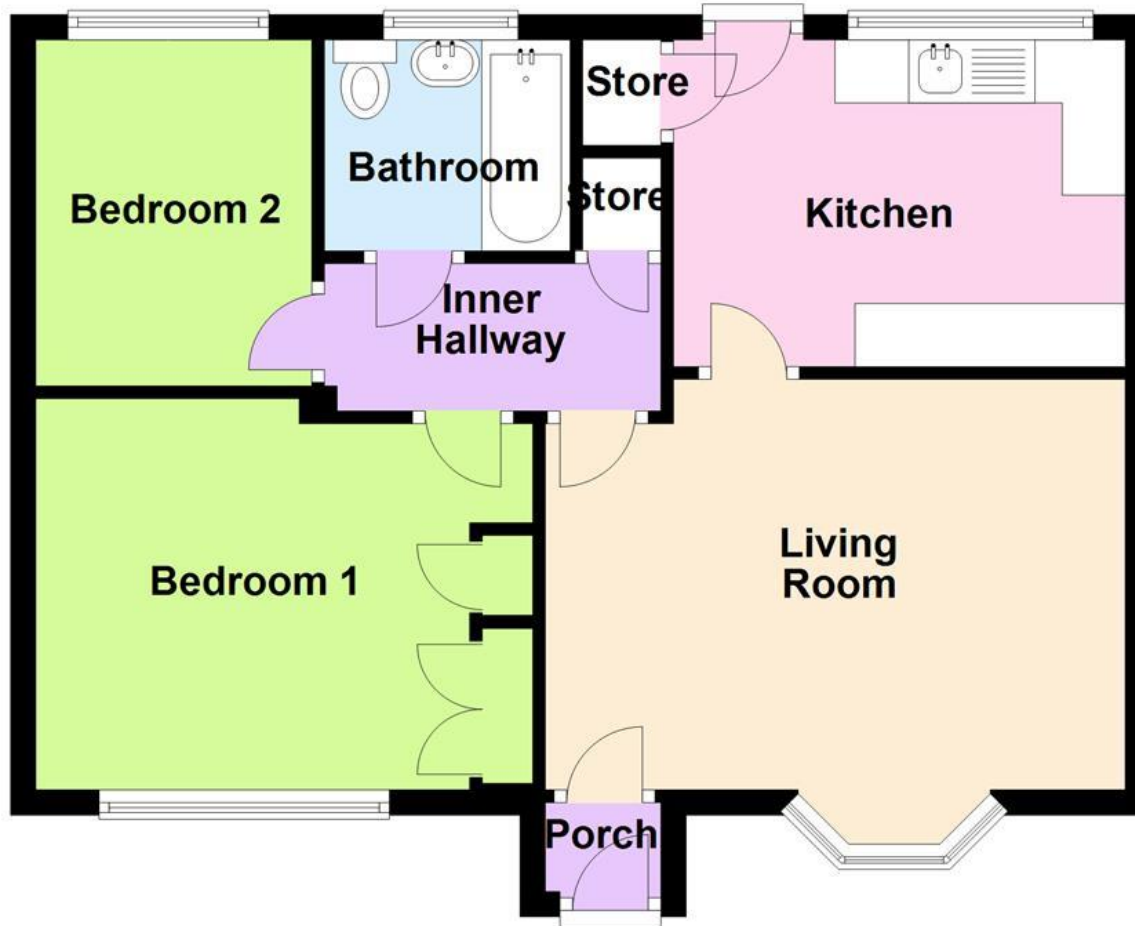
Viewer's Note:

Services connected:
Council tax band: D
Tenure: Leasehold years remaining, lease from
Ground Rent: £0
Service Charge: £0
Restrictions:

Floor Plan

This floor plan is not drawn to scale and is for illustration purposes only

Floor Plan



Energy Efficiency Rating

Score	Energy rating	Current	Potential
92+	A		
81-91	B		88 B
69-80	C		
55-68	D	60 D	
39-54	E		
21-38	F		
1-20	G		

Map Location

