



Curlew Street, SE1

£646 Per week

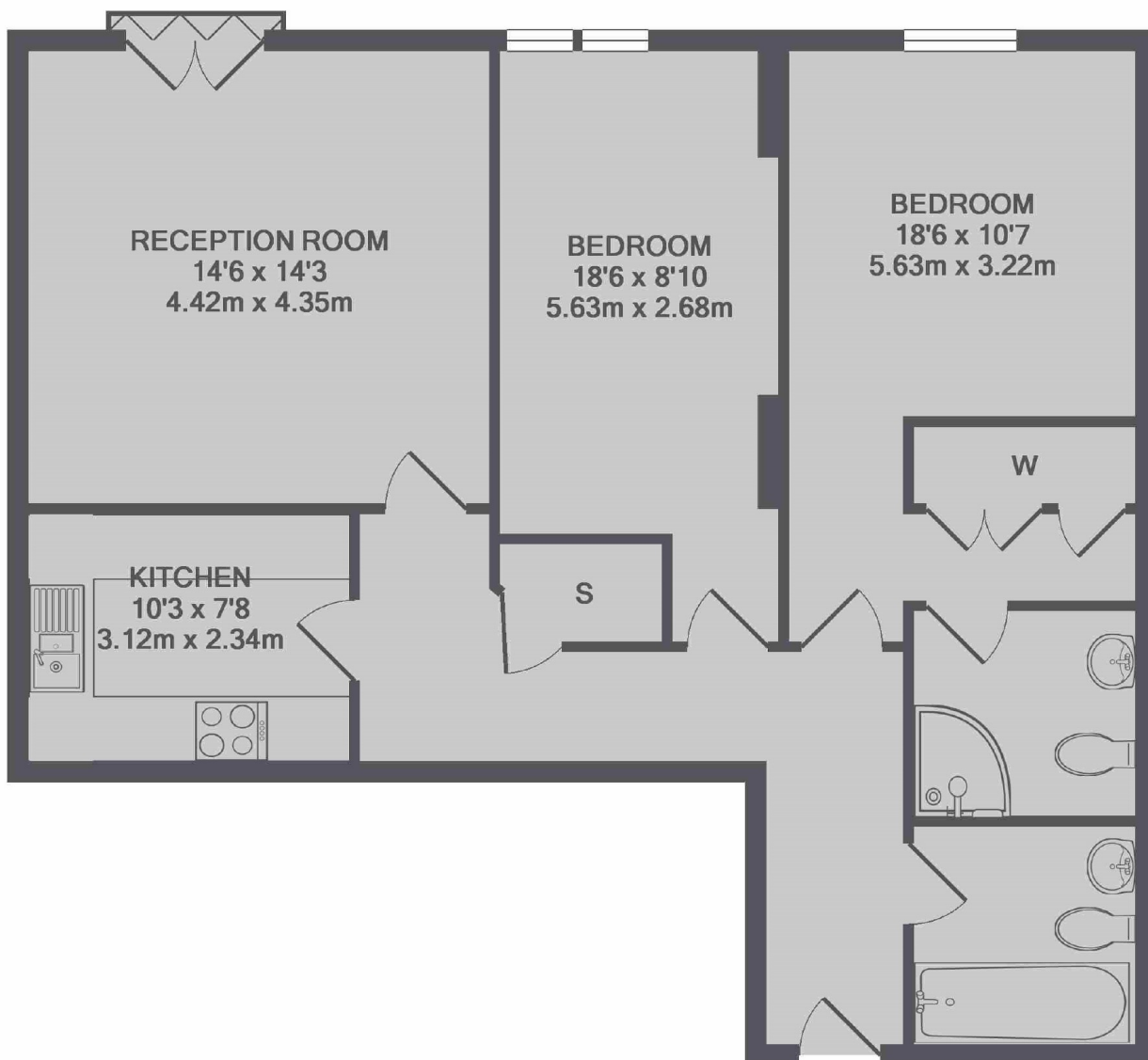
This spacious two double bedroom apartment in central Shad Thames has a large reception room, excellent storage a family sized bathroom and a further ensuite.

Vanilla and Sesame Court is situated in the heart of Shad Thames moments from the riverfront bars and restaurants. Tower Hill and London Bridge Stations are less than a mile away.

Features

- Two Double Bedrooms
- Two Bathrooms
- First Floor
- Furnished
- Dishwasher
- Shad Thames

Curlew Street, London, SE1



TOTAL APPROX. FLOOR AREA 867 SQ.FT. (80.5 SQ.M.)