



Connells

Clittaford Road
Plymouth



Property Description

Welcoming to the market is the exciting opportunity to acquire this two bedroom mid-terrace home, situated in a popular residential location. Benefiting from two double bedrooms, lounge, kitchen/diner, shower room, front & rear garden and easy on-street parking.

Located in Southway, close to well-regarded schools, Derriford Hospital and a host of local amenities.

As you enter this property, you have a spacious lounge with a beautiful bay window to the rear and fireplace, a substantial kitchen/diner with a lot potential and direct access to a low-maintenance rear garden.

On the first floor, you have two good-sized double bedrooms and shower room comprising walk-in shower, hand basin and W.C.

Externally, this property offers a front & rear garden and easy on-street parking.

This property is a perfect opportunity for a growing family and investor, appealing to a wide range of buyers.

A MUST SEE!

Ground Floor

Lounge

10' 6" maximum x 17' 9" maximum (3.20m maximum x 5.41m maximum)

Kitchen/Diner

13' 9" maximum x 16' 7" maximum (4.19m maximum x 5.05m maximum)

First Floor

Bedroom One

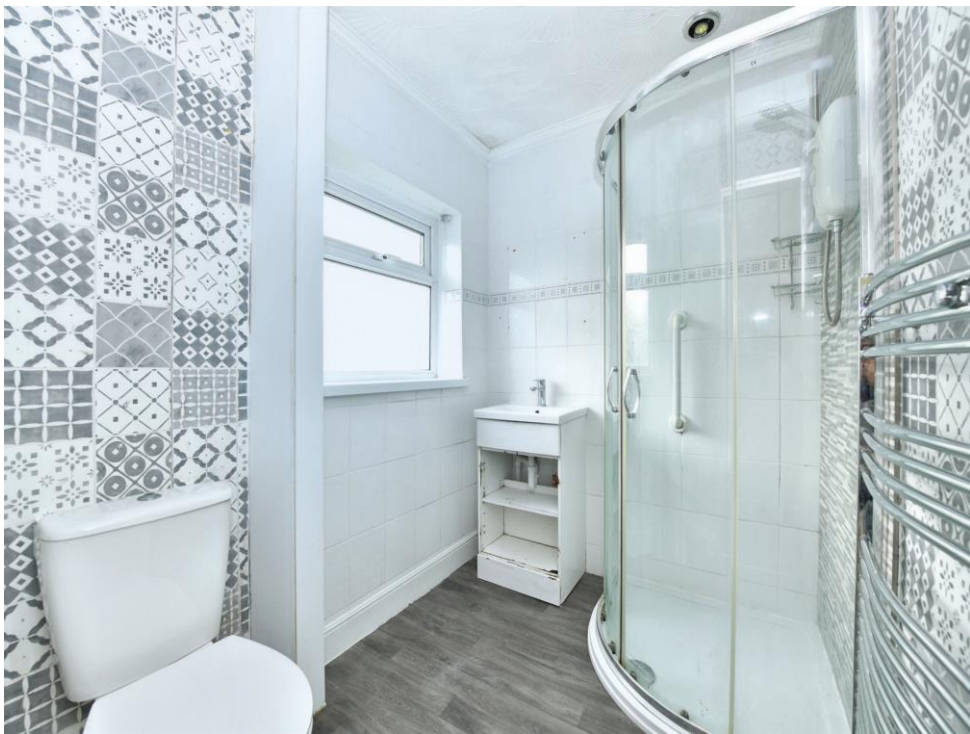
10' 7" maximum x 15' 10" maximum (3.23m maximum x 4.83m maximum)

Bedroom Two

10' 10" x 10' (3.30m x 3.05m)

Shower Room









This floor plan is for illustrative purposes only. It is not drawn to scale. Any measurements, floor areas (including any total floor area), openings and orientation are approximate. No details are guaranteed, they cannot be relied upon for any purpose and they do not form part of any agreement. No liability is taken for any error, omission or misstatement. A party must rely upon its own inspection(s). Powered by www.focalagent.com

To view this property please contact Connells on

T 01752 674 467
E plymouth@connells.co.uk

32 Mannamead Road
 PLYMOUTH PL4 7AA

EPC Rating: D Council Tax
 Band: A

Tenure: Freehold

view this property online connells.co.uk/Property/PLH312782



1. MONEY LAUNDERING REGULATIONS Intending purchasers will be asked to produce identification documentation at a later stage and we would ask for your co-operation in order that there will be no delay in agreeing the sale. 2. These particulars do not constitute part or all of an offer or contract. 3. The measurements indicated are supplied for guidance only and as such must be considered incorrect. Potential buyers are advised to recheck measurements before committing to any expense. 4. We have not tested any apparatus, equipment, fixtures, fittings or services and it is in the buyers interest to check the working condition of any appliances.

Connells Residential is registered in England and Wales under company number 1489613, Registered Office is Cumbria House, 16-20 Hockliffe Street, Leighton Buzzard, Bedfordshire, LU7 1GN. VAT Registration Number is 500 2481 05.

See all our properties at www.connells.co.uk | www.rightmove.co.uk | www.zoopla.co.uk

Property Ref: PLH312782 - 0004