

Uplands Road, Oadby

£350,000 Freehold

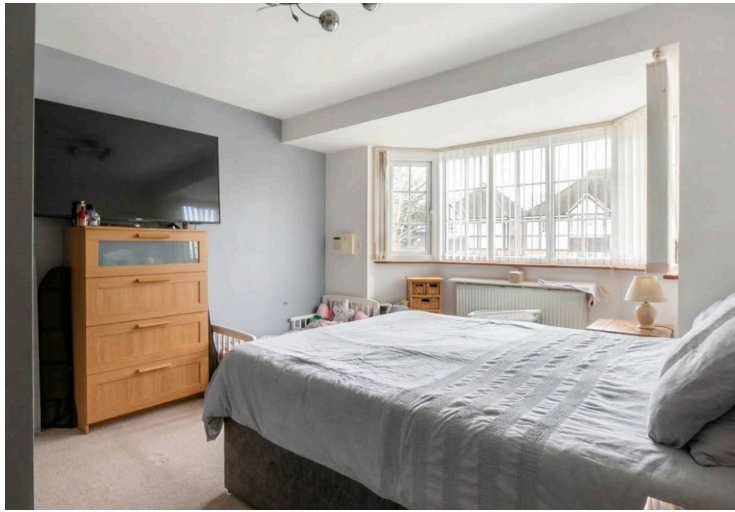
A three-bedroom semi-detached home located in the suburb of Oadby. Featuring a spacious lounge diner, fitted kitchen, driveway and a low-maintenance rear garden with a versatile gym/storage space.

Council Tax band: C

Tenure: Freehold

EPC Energy Efficiency Rating: C





Hallway

12' 10" x 6' 3" (3.90m x 1.90m)

With a window to the side elevation, a radiator, and tiled flooring that continues into the kitchen.

Kitchen

12' 2" x 6' 7" (3.70m x 2.00m)

Includes a window to the rear elevation, electric oven, gas hob, plumbing for an appliance and a door to the garden.

Living Room / Through Dining Room

25' 7" x 12' 2" (7.80m x 3.70m)

Includes a large bay window to the front elevation, large sliding patio doors to the rear elevation, and two radiators.

Landing

With a window to the side elevation.



Bedroom One

13' 1" x 12' 2" (4.00m x 3.70m)

With a bay window to the front elevation, built-in storage and a radiator.

Bedroom Two

13' 1" x 12' 2" (4.00m x 3.70m)

With a window to the rear elevation, built-in wardrobes, a cupboard containing the combi boiler, and a radiator.

Bedroom Three

7' 7" x 6' 7" (2.30m x 2.00m)

With a window to the rear elevation, and a radiator.

Bathroom

9' 2" x 6' 3" (2.80m x 1.90m)

Includes a window to the rear elevation, a toilet, sink, and shower over the bath, tiled walls, tiled flooring, a loft hatch, and a radiator.

Storage Room

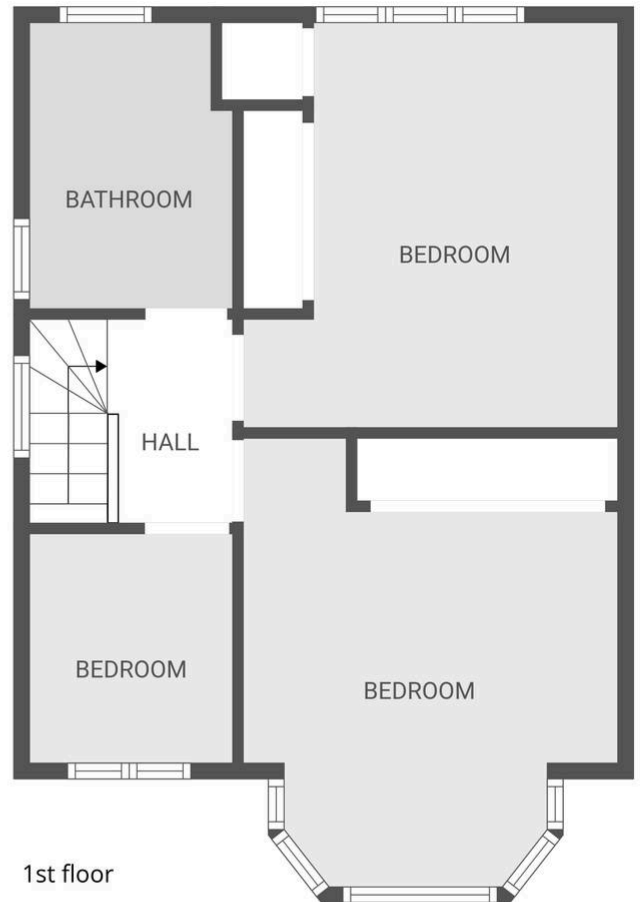
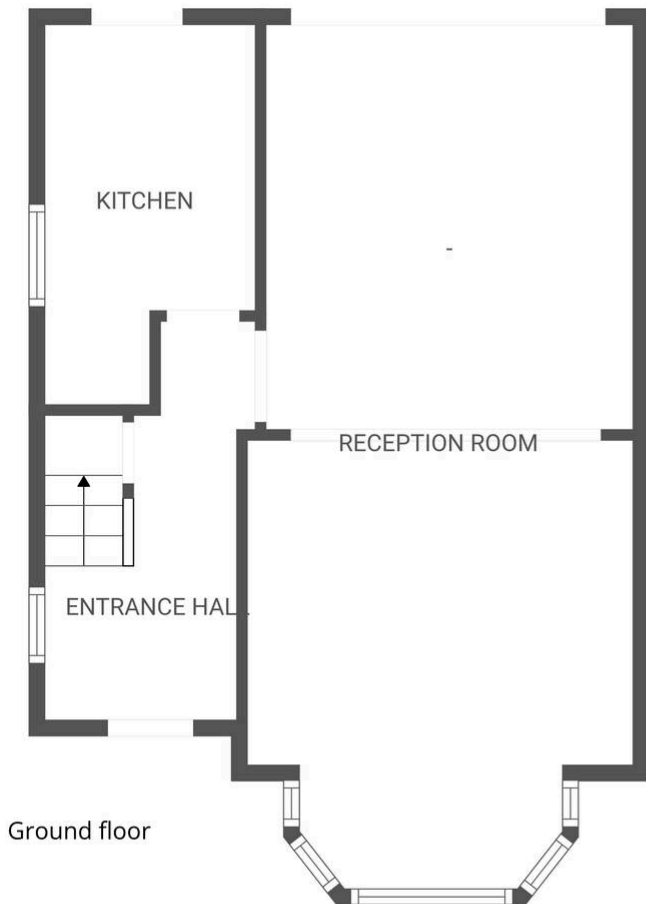
Located in the Garden - converted into a gym/storage space with mirrors, lighting, and electrics.

Garden

Low maintenance; features a slabbed patio area, a lawn, and a second tiered patio area at the end of the lawn.

Driveway

For approx 1 vehicle.



FLOOR PLAN CREATED BY CUBICASA APP. MEASUREMENTS DEEMED HIGHLY RELIABLE BUT NOT GUARANTEED.

You can include any text here. The text can be modified upon generating your brochure.

We'll keep you moving...



We must inform all prospective purchasers that the measurements are taken by an electronic tape and are provided as a guide only and they should not be used as accurate measurements. We have not tested any mains services, gas or electric appliances, or fixtures and fittings mentioned in these details, therefore, prospective purchasers should satisfy themselves before committing to purchase. Intending purchasers must satisfy themselves by inspection or otherwise to the correctness of the statements contained in these particulars. Knightsbridge Estate Agents & valuers (nor any person in their employment) has any authority to make any representation or warranty in relation to the property. The floor plans are not to scale, and are intended for use as a guide to the layout of the property only. They should not be used for any other purpose. Similarly, the plans are not designed to represent the actual décor found at the property in respect of flooring, wall coverings or fixtures and fittings.