



Rennie Estate, SE16

£225,000

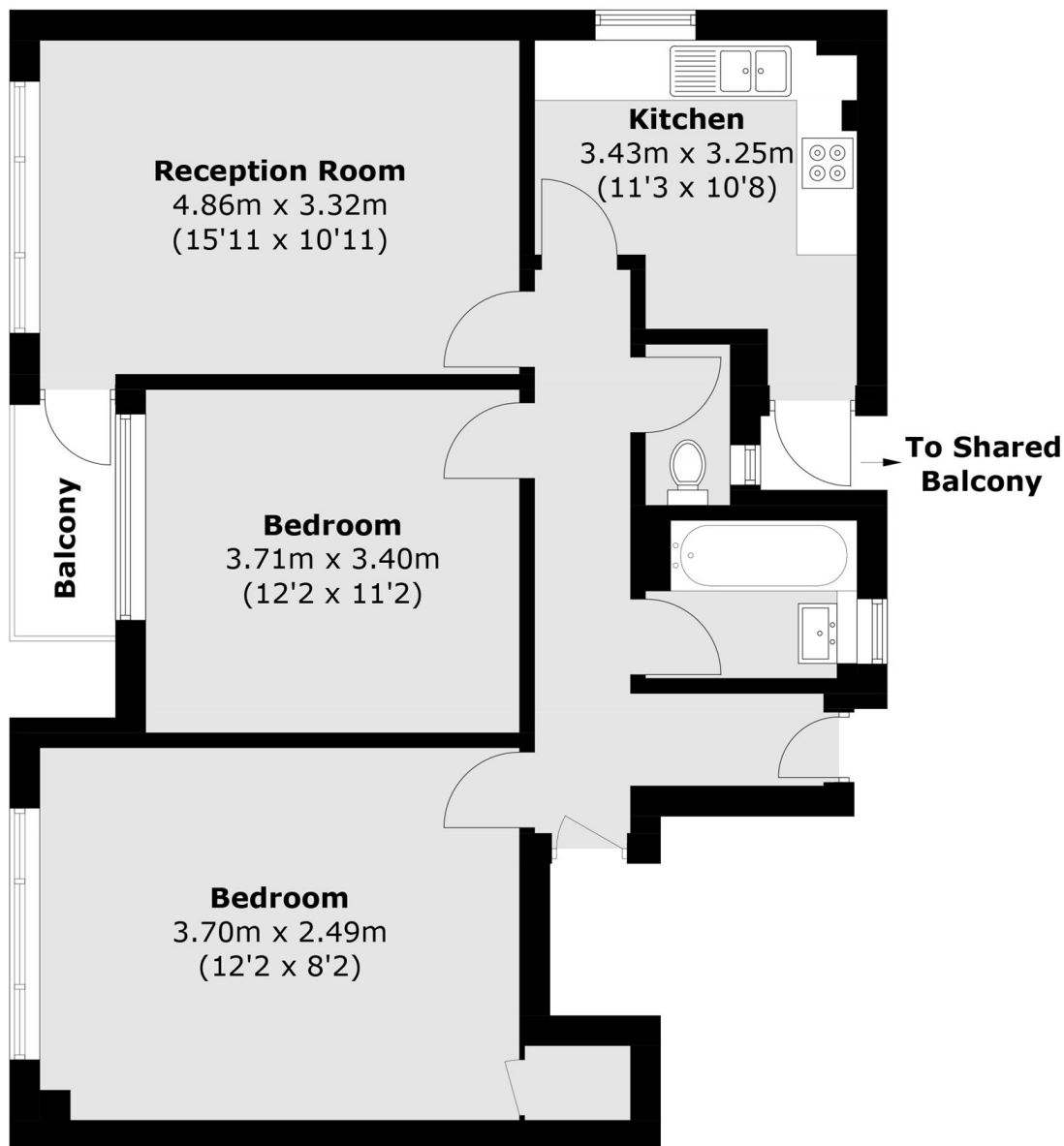
CASH BUYERS ONLY. This property will be legally prepared enabling any interested buyer to secure the property immediately once their bid/offer has been accepted. Ultimately a transparent process which provides speed, security and certainty for all parties.

Landmann House is located 0.1 miles from South Bermondsey station and 0.7 miles from Bermondsey station offering transport links to all of London. A wide range of shops, cafés and restaurants and the Canada Water masterplan are moments away.

Features

Immediate exchange of contracts' available
Being sold via Secure Sale'

Rennie Estate, London, SE16



Total area (approx.): 71.7 sq. m (771.8 sq. ft)
Balcony: 2.3 sq. m (24.7 sq. ft)