



## Hayes Crescent | London | NW11

£403 Per Week |

 1  1  1  C

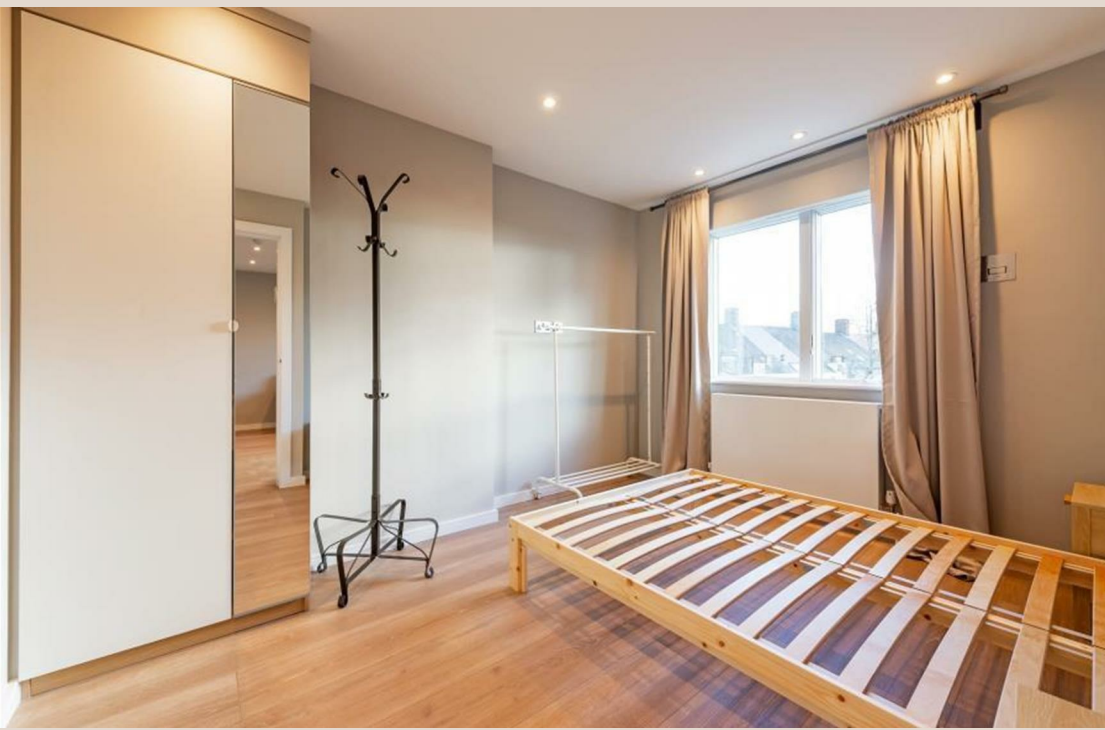
**ADN**  
RESIDENTIAL

A bright and modern one bedroom apartment located in Temple Fortune NW11. This wonderful property has been finished to a high standard and comprises; open plan kitchen/reception room with great light from the dual aspect windows and skylight, double bedroom with built in storage, separate study area and a modern shower room. Hayes Crescent is ideally located 0.7m from Brent Cross underground station (Northern Line) and the local amenities that Finchley Road has to offer.

- Open Plan Kitchen/Reception Room
- One Bedroom
- Study Area
- Shower Room
- Wooden Flooring
- Double Glazed Windows

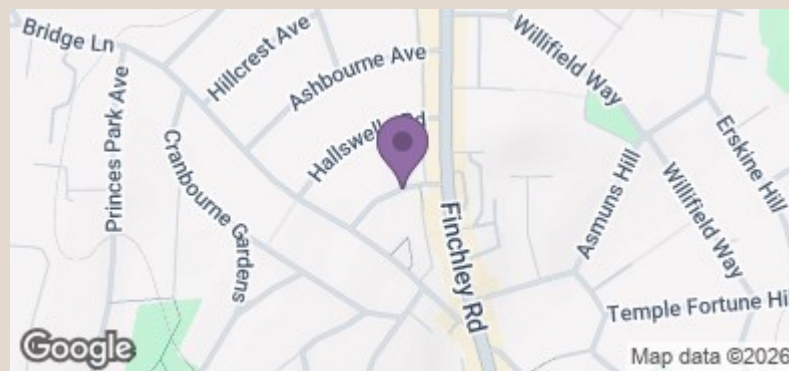
Council Tax Band: B  
EPC: C







**HAYES CRESCENT, GOLDERS GREEN, NW11**  
**APPROX INTERNAL AREA – 414 SQ FT/ 38.5 SQ M**  
**NOT SCALE**



Energy Efficiency Rating		Current	Potential
Very energy efficient - lower running costs			
(92 plus)	A		
(81-91)	B		
(69-80)	C	76	76
(55-68)	D		
(39-54)	E		
(21-38)	F		
(1-20)	G		
Not energy efficient - higher running costs			

England & Wales EU Directive 2002/91/EC