



Walkers
People & Property

Barn Mead, Galleywood. CM2 8LS

Guide Price £700,000 - £750,000

Barn Mead

Galleywood, Chelmsford

GUIDE £700,000 - £750,000 Presenting an exquisite modern-style link detached residence spanning approximately 1800 square feet, nestled in a charming locale between Galleywood and Great Baddow.

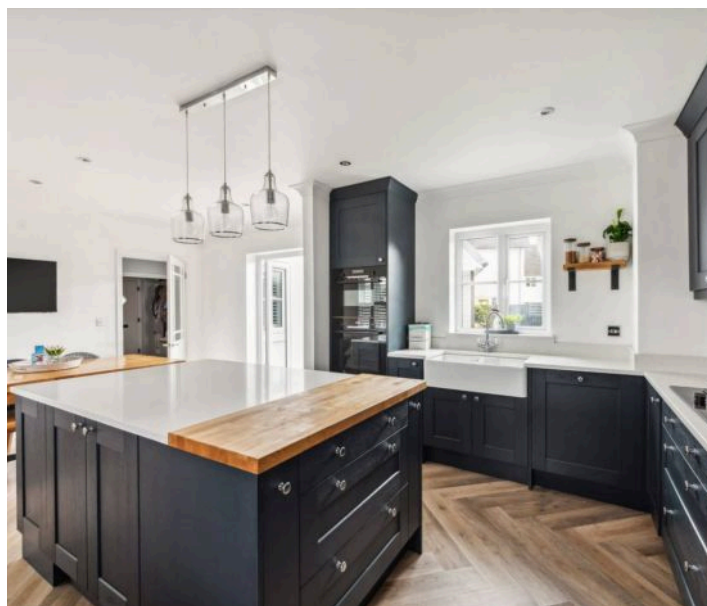
Council Tax band: TBD

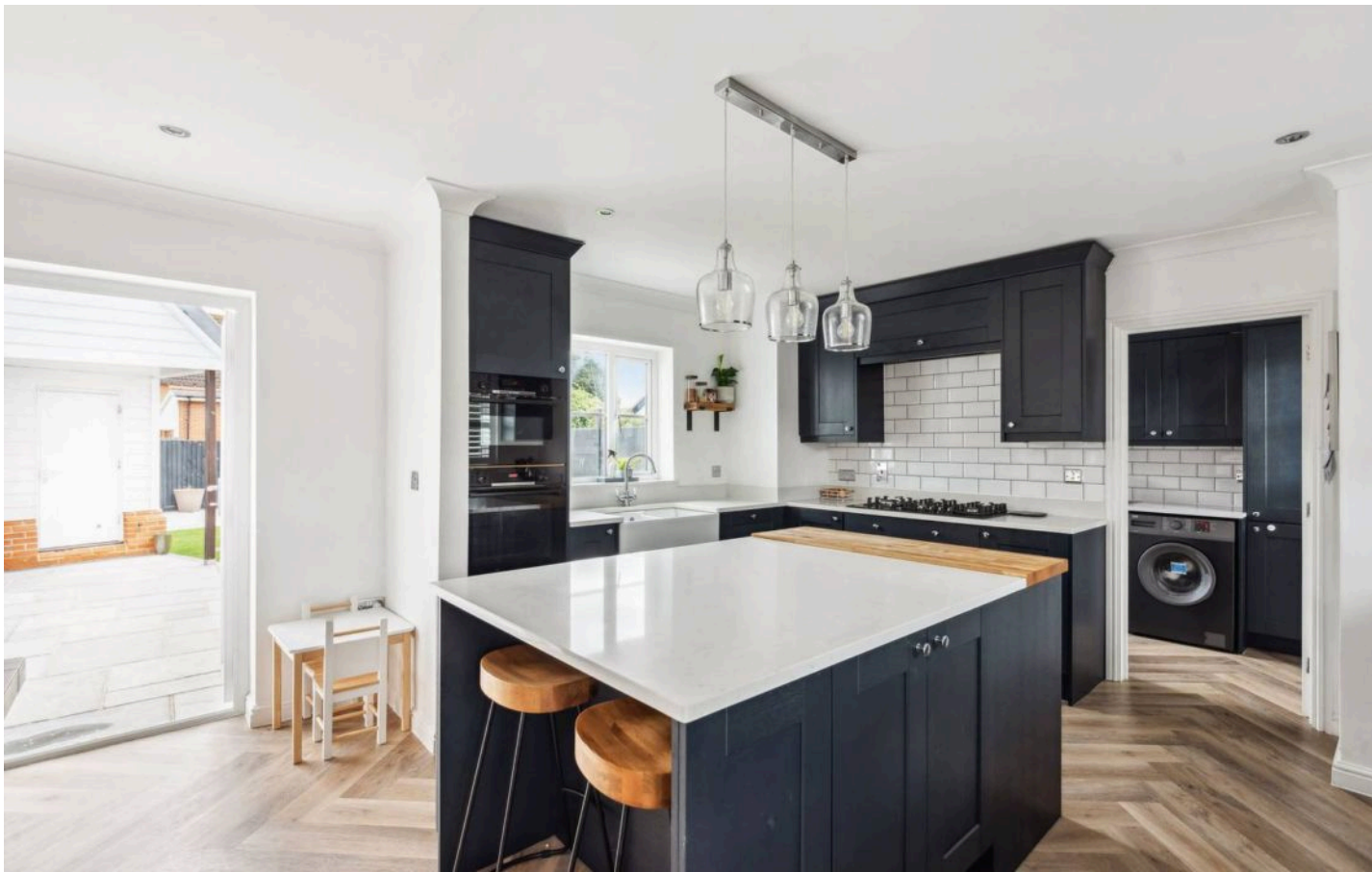
Tenure: Freehold

EPC Energy Efficiency Rating: C

EPC Environmental Impact Rating: C

- Four Bedrooms
- Three bathrooms
- Two reception rooms
- Garage
- Car port
- Immaculate condition





Barn Mead

Galleywood, Chelmsford

GUIDE £700,000 - £750,000. Presenting an exquisite modern-style link detached residence spanning approximately 1800 square feet, nestled in a charming locale between Galleywood and Great Baddow. Graced with scenic vistas of open farmland, this property offers unparalleled convenience with swift access to the A130, A12 and Chelmsford. Meticulously maintained and updated, this home comes with a seamless upward chain. Discover this gem within Barn Mead, an exclusive enclave boasting only seven executive homes.

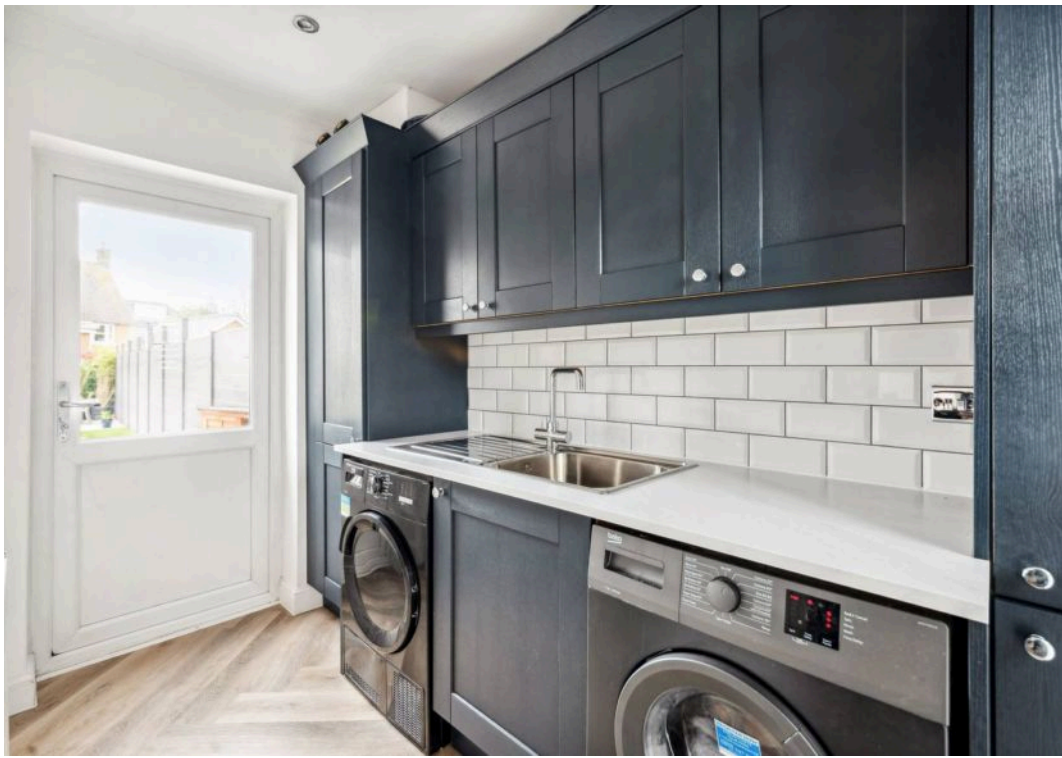
On the ground floor, the accommodation unfolds gracefully, featuring a lounge, playroom or dining room, kitchen/breakfast room, utility area, and cloakroom. Ascend to the first floor to find four bedrooms, including a newly fitted en-suite shower room adjoined to the master bedroom and another en-suite to the second bedroom, alongside a well-appointed family bathroom.

Enjoy the proximity to local amenities, including shops and schools, while Lathcoats Farm and Chelmsford City Centre are nearby, offering an array of shopping outlets, dining establishments, recreational activities, and a mainline railway station facilitating easy commutes to London Liverpool Street.

Anti-Money Laundering Checks and Legal Support:

A mandatory Anti-Money Laundering (AML) check is required on all buyers and sellers and is facilitated via our legal partner at a cost of £65 per property payable upon instruction. The service also provides access to an unlimited legal advice helpline staffed by qualified solicitors to assist with any queries.

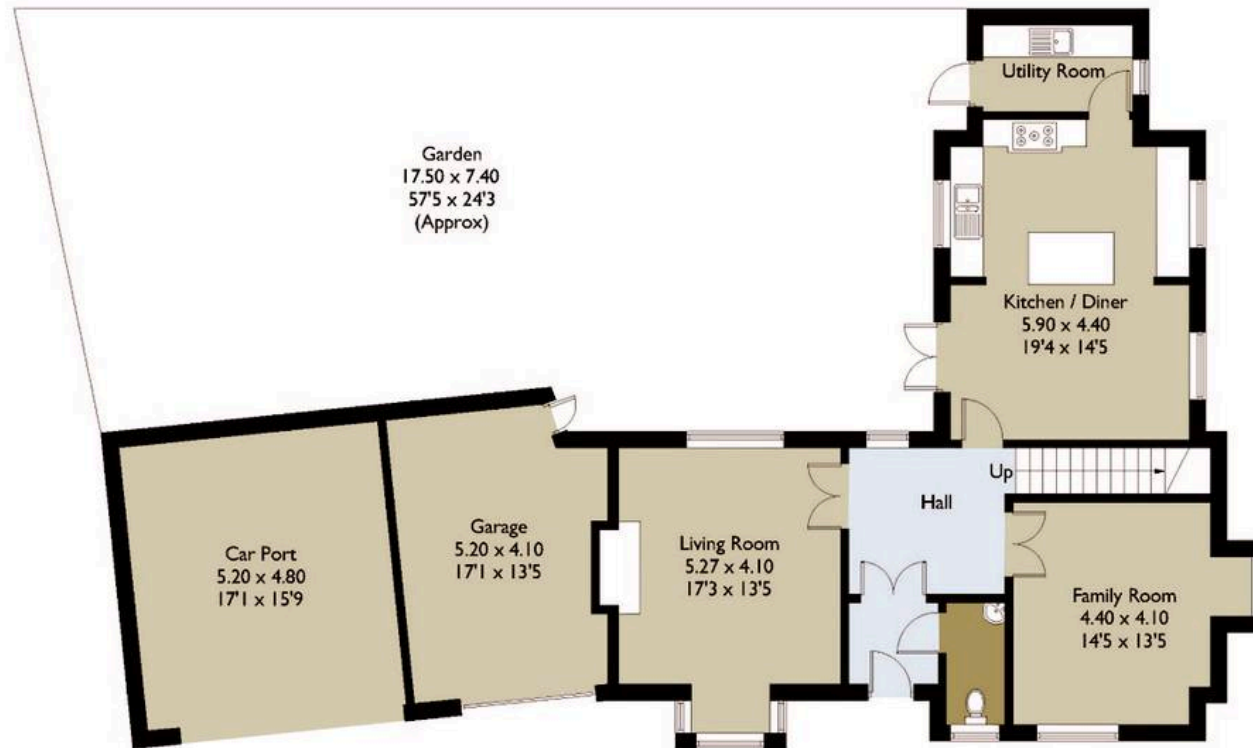




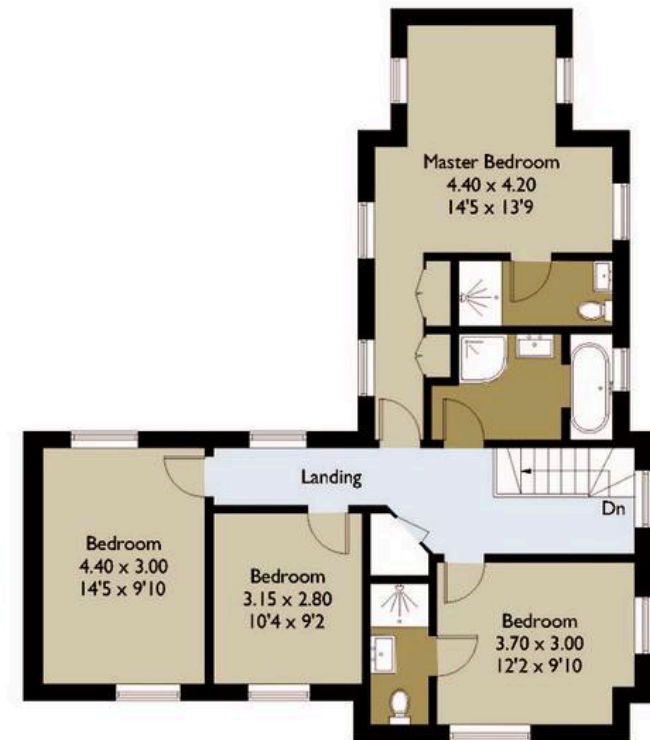




Ground Floor



First Floor



Psst... Have you heard of

Walkers discreet marketing?

Many people lose out on their dream home to someone in a better position.

Often, it is because they have delayed putting their house on the market, preferring to find somewhere first and then sell.

That is why we have innovated a totally unique and highly confidential moving home solution to put you in a competitive position.

Let us find you a buyer *without any advertising or pressure* and without the neighbours knowing.

Your secret is safe with us....

Get in touch for a complimentary valuation.

Looking To Sell Or Let Your Home?

Book your free valuation to see how much your home is worth.

Contact Us
01277 355005



Our Website

www.walkersstates.co.uk



Our Address

90 High Street
Ingatstone
CM4 9DW



www.walkersstates.co.uk

About Us

Walkers | People & Property is built on a lifelong family passion for homes. Martin, Gillian and Adam Walker lead a respected, professional team who live and breathe all aspects of property. With over 30 years of experience, we understand the moving process on a personal level and are committed to delivering exceptional results. Most of all, helping people move is our hobby, and handing over the keys to excited buyers remains our favourite moment.

Get In Touch



Browse Properties

