



**LEESE &  
GORDON**  
Independent Estate Agents

Clifton

Guide Price £475,000

Basement Flat, 61 South Parade Mansions,  
Oakfield Road, Clifton, Bristol, BS8 2BB.

- Fantastic Lifestyle Property
- Just Off Whiteladies Road
- Set in Beautiful Georgian Style Grade II Listed Terrace
- Private Rear Garden & Off Street Parking
- 2 Double Bedrooms over Two Levels Giving Sense of Space
- Generous Sitting/Dining Room

From the hall a flight of stairs rise to a landing with useful storage cupboard and access to the second bedroom. Whilst smaller than the main bedroom it is double sized and ideally suited as a home office/occasional bedroom which feels slightly separate from the rest of the apartment. Window to the side aspect fitted with plantation shutters. From the hall stairs also lead down to a very useful basement with two vaulted areas. Great for storage, it does have a slightly limited ceiling height.

The rear garden offers level access from the kitchen area and provides a low maintenance area to enjoy being outside. Plenty of space for garden furniture, BBQ's etc. Screened and separated from the parking area beyond by a gated fence. The parking area provides three spaces for the four apartments in the building and are available on a first come first serve basis. The gardens positioned in front of South Parade Mansions are private and for the sole use of residents to enjoy.

From the hall a flight of stairs rise to a landing with useful storage cupboard and access to the second bedroom. Whilst smaller than the main bedroom it is double sized and ideally suited as a home office/occasional bedroom which feels slightly separate from the rest of the apartment. Window to the side aspect fitted with plantation shutters. From the hall stairs also lead down to a very useful basement with two vaulted areas. Great for storage, it does have a slightly limited ceiling height.





The rear garden offers level access from the kitchen area and provides a low maintenance area to enjoy being outside. Plenty of space for garden furniture, BBQ's etc. Screened and separated from the parking area beyond by a gated fence. The parking area provides three spaces for the four apartments in the building and are available on a first come first serve basis. The gardens positioned in front of South Parade Mansions are private and for the sole use of residents to enjoy.

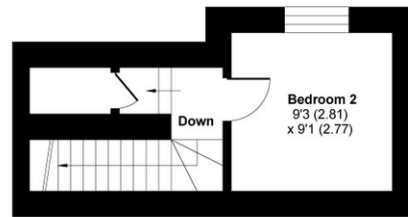
**Important Information:**

Remainder of a 999 year lease (from 1991).  
Management company own the freehold (effectively a share of freehold).  
No Ground Rent.  
Current Service Charge £205.83 per month.  
Council Tax Band D.  
Within Clifton East controlled parking zone.  
This information should be checked by your legal adviser.

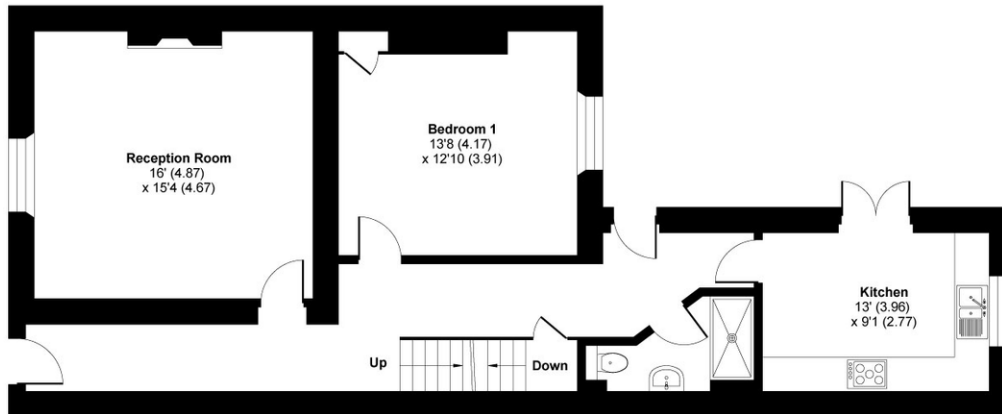


Energy Performance Certificate: C

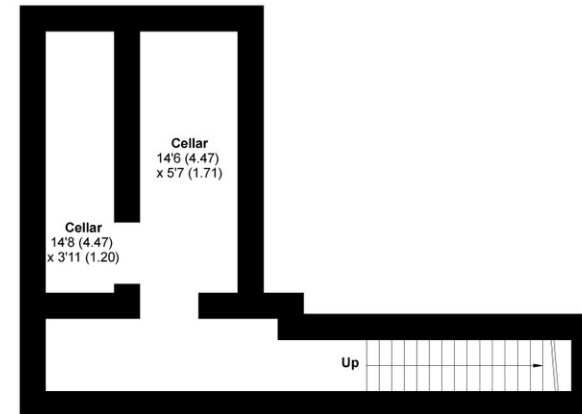
Council Tax: D



FIRST FLOOR



GROUND FLOOR



LOWER GROUND FLOOR

 Floor plan produced in accordance with RICS Property Measurement 2nd Edition, Incorporating International Property Measurement Standards (IPMS2 Residential). © nichecom 2026. Produced for Leese & Gordon. REF:1440406