



Connells

Sweetapple Close
Tidworth



Property Description

Just look at the photos! Offering a fantastic garden with SAUNA and workshop, this superbly presented house also offers extensive views over parkland to the front. It is one of only four in this location and early viewings are highly recommended. The A303 is also just minutes away.

Entrance Hall

Access to both lounge and cloakroom, stairs to first floor.

Cloakroom

Comprising a WC and pedestal wash hand basin.

Lounge

Front aspect, built in storage cupboard.

Kitchen/ Dining Room

Comprising a single drainer sink unit, range of wall and base units with work surfaces over, built in oven, inset hob unit with concealed hood over, space for washing machine, space for dishwasher further appliance space, rear aspect with French doors to garden.

Landing

Bedroom One

Rear aspect.

Bedroom Two

Front aspect with views over the park. Built in cupboard.

Bathroom

Comprising a panel enclosed bath with built in shower and glass screen, pedestal wash hand basin and WC.

Outside

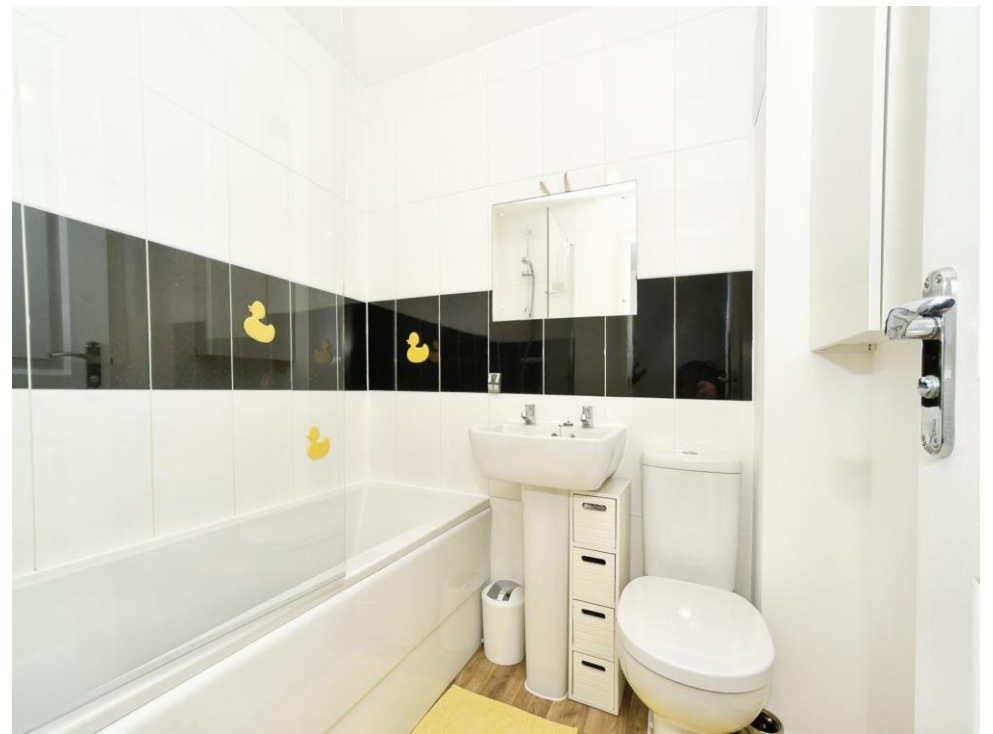
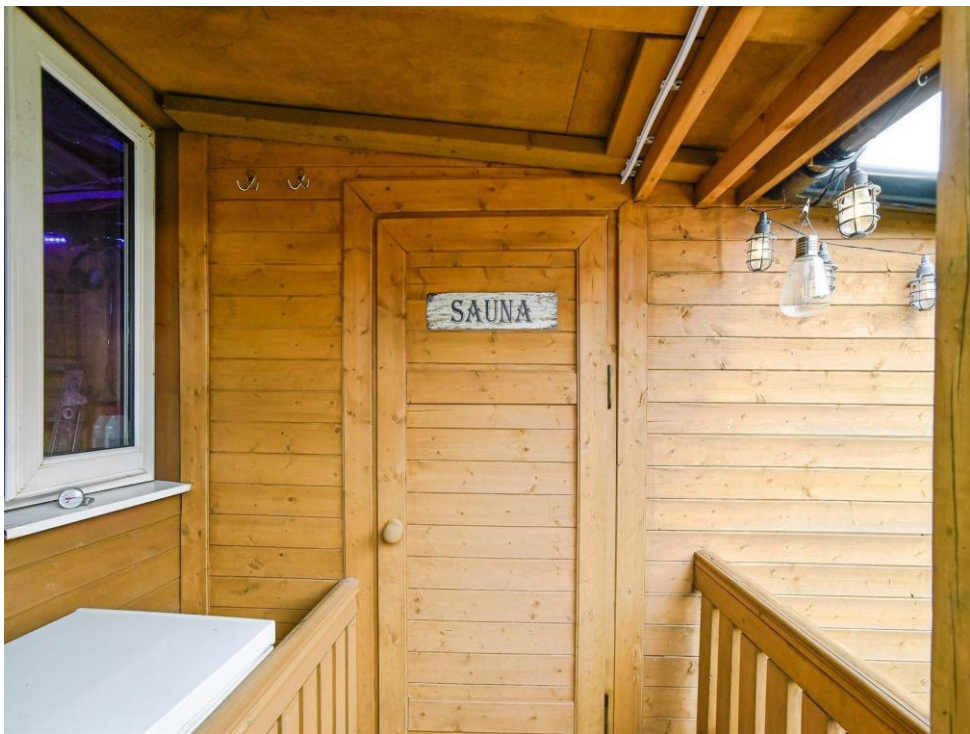
Rear Garden

An exceptional garden for a two bedroom house, offering a patio area and lawn with attractive borders. A pathway leads to a professionally built SAUNA with covered area and workshop. There is a water supply both to the front and rear garden together with an power supply to the rear and gated rear access for bins.

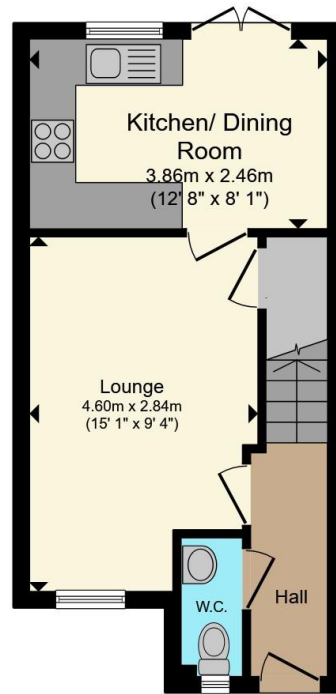
Parking

Two parking spaces with further visitors parking

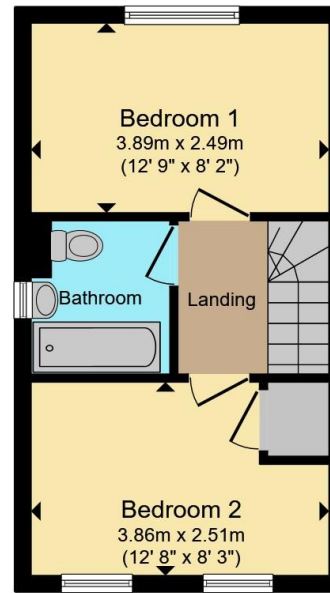








Ground Floor



First Floor

Total floor area 57.4 m² (617 sq.ft.) approx

This floor plan is for illustrative purposes only. It is not drawn to scale. Any measurements, floor areas (including any total floor area), openings and orientation are approximate. No details are guaranteed, they cannot be relied upon for any purpose and they do not form part of any agreement. No liability is taken for any error, omission or misstatement. A party must rely upon its own inspection(s). Powered by www.propertybox.io

Connells

To view this property please contact Connells on

T 01980 622 662

E amesbury@connells.co.uk

Unit 3 23 Salisbury Street AMESBURY
SALISBURY SP4 7AW

EPC Rating: B Council Tax
Band: C

Tenure: Freehold

view this property online connells.co.uk/Property/ABY308733



1. MONEY LAUNDERING REGULATIONS Intending purchasers will be asked to produce identification documentation at a later stage and we would ask for your co-operation in order that there will be no delay in agreeing the sale. 2. These particulars do not constitute part or all of an offer or contract. 3. The measurements indicated are supplied for guidance only and as such must be considered incorrect. Potential buyers are advised to recheck measurements before committing to any expense. 4. We have not tested any apparatus, equipment, fixtures, fittings or services and it is in the buyers interest to check the working condition of any appliances.

Connells Residential is registered in England and Wales under company number 1489613, Registered Office is Cumbria House, 16-20 Hockliffe Street, Leighton Buzzard, Bedfordshire, LU7 1GN. VAT Registration Number is 500 2481 05.

See all our properties at www.connells.co.uk | www.rightmove.co.uk | www.zoopla.co.uk

Property Ref: ABY308733 - 0003