



Argyle Road, W13

£2,000 Per calendar month

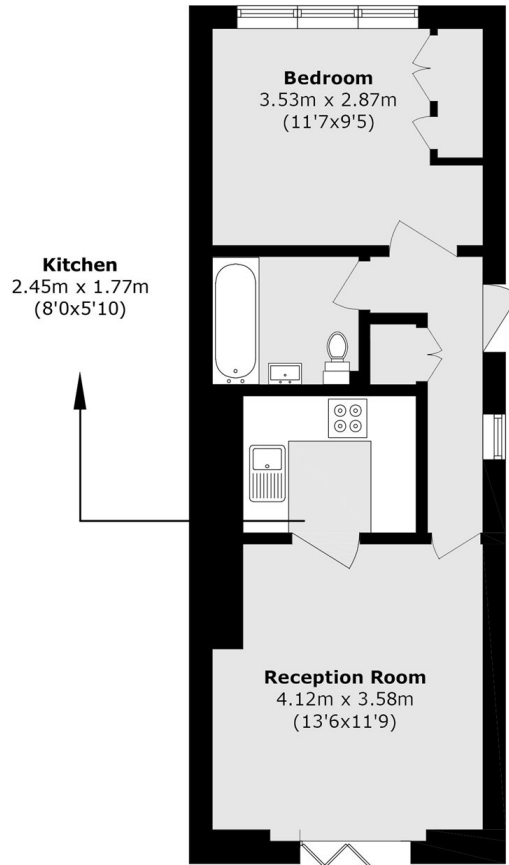
A well presented ground floor one bedroom apartment with a bright reception room opening onto a private decking area, perfect for entertaining and enjoying views over the attractive communal gardens.

Located on this pleasant tree-lined road in the heart of West Ealing. Under a quarter of a mile to West Ealing Station on the Elizabeth Line.

Features

One Bedroom Flat
Ground Floor Flat
Wooden Flooring
Private Garden
Off Street Parking
Close to Station

Argyle Road, London, W13



Total area (approx.): 38.5 sq. m (414.4 sq. ft)