

NEVIN & WELLS

Residential

Established 2002



Crown Street, Egham, Surrey, TW20 9DA

£250,000 L/H



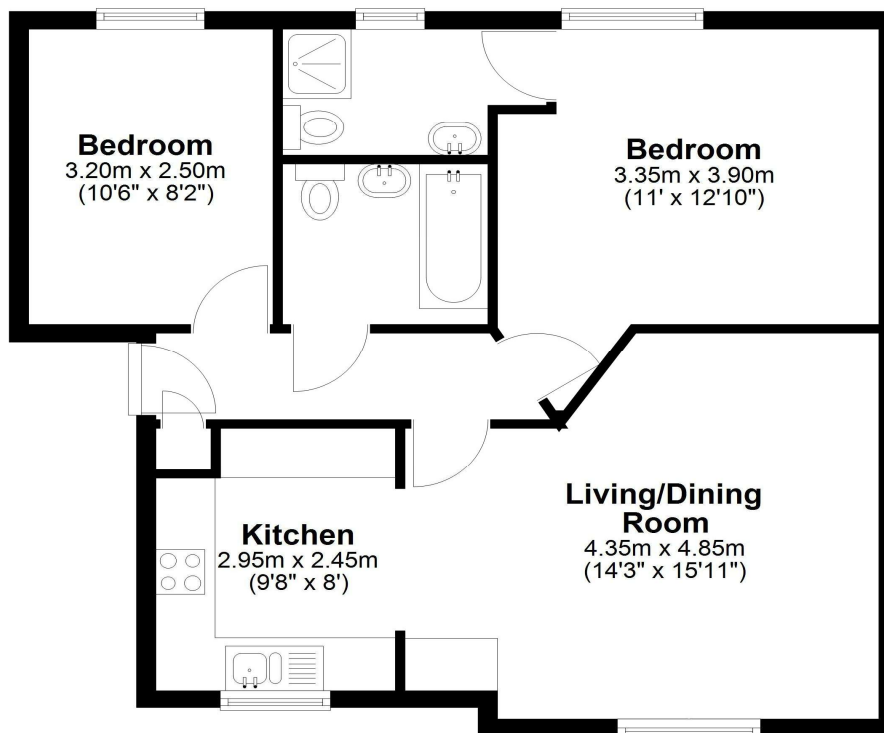
A beautifully presented two-bedroom apartment, ideally situated in one of Egham's premier roads near Egham town centre. The well-maintained property, entered via a neat and tidy communal entrance, offers an open plan kitchen to living room, two bathrooms (one en-suite) and allocated off street parking. Totally redecorated, with double glazing and gas central heating. No onward chain.

Crown Street, Egham, Surrey, TW20 9DA

FLOOR PLAN

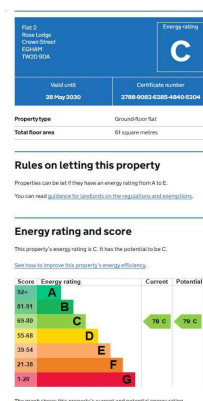
Ground Floor

Approx. 60.1 sq. metres (646.5 sq. feet)



Total area: approx. 60.1 sq. metres (646.5 sq. feet)

EPC



LEASE: 125 years from 1 January 2006

SERVICE CHARGE: £815 per annum

GROUND RENT: £150 per annum

COUNCIL TAX BAND: D - Runnymede Borough Council

VIEWINGS: By appointment with the clients selling agents,
Nevin & Wells Residential on 01784 437 437 or visit
www.nevinandwells.co.uk



All measurements are approximate. Nevin & Wells Residential have not tested any systems or appliances.