

# Frank Harris — & Co. —



## Vauxhall, SW8

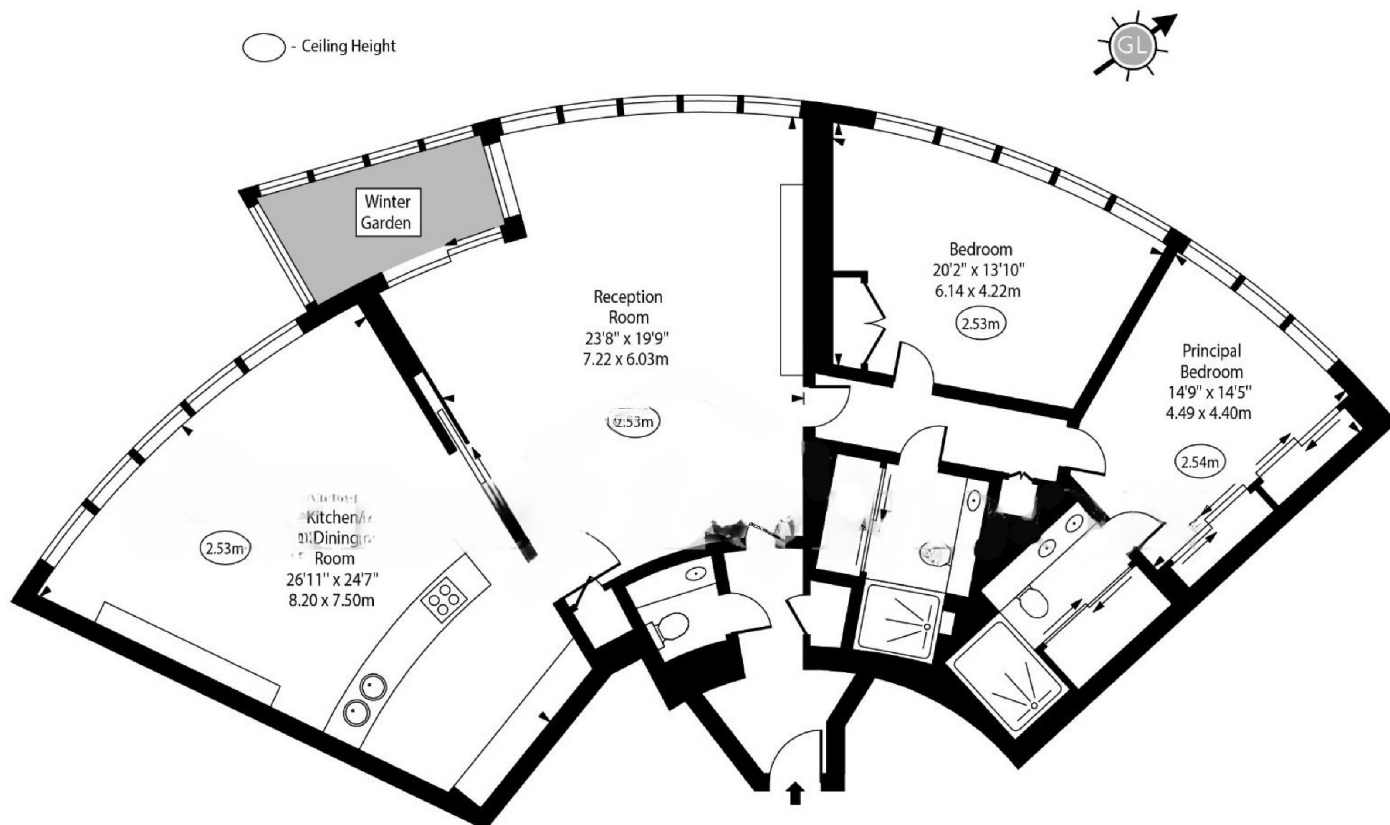
£2,538 pcm

An immaculately presented converted three bedroom apartment into an amazing two bedroom, two bathroom with an additional WC spanning 1800sqft. Located on the 34th floor, this unit offers completely uninterrupted views over the River Thames, a separate kitchen/dining area and winter garden.

The Tower sets a new benchmark in specification and finish. This stunning apartment boasts an exacting standard with high end fixtures and fittings, bespoke joinery, marble flooring and tiling. Full height windows to all rooms offer breath taking views across Nine Elms, the Thames, Pimlico and along to the London Eye.

# Frank Harris & Co.

St George Wharf, SW8 2DU



Approx Gross Internal Area 1890 Sq Ft - 175.58 Sq M  
(Including Winter Garden)

For Illustration Purposes Only - Not To Scale  
[www.goldlens.co.uk](http://www.goldlens.co.uk)  
Ref. No. 017468R

Frank Harris & Co. South Bank and Waterloo  
123 Stamford Street, London,  
SE1 9NN  
020 7590 7100  
[southbanklettings@frankharris.co.uk](mailto:southbanklettings@frankharris.co.uk)

Energy Rating: TBC. We aim to make our particulars both accurate and reliable. However they are not guaranteed; nor do they form part of an offer or contract. If you require clarification on any points then please contact us, especially if you're traveling some distance to view. Please note that appliances and heating systems have not been tested and therefore no warranties can be given as to their good working order.

 Regulated  
Estate Agent  
and Letting Agent

[frankharris.co.uk](http://frankharris.co.uk)