



## Redcliffe Gardens, W4

£8,000 Per week

A refurbished five bedroom house in the heart of Bedford Park. The property has a new kitchen, double reception room and three bathrooms, making it perfect for a family.

Ideally located with easy access to Strand-on-the-Green Primary School, Chiswick, Gunnersbury and Kew Bridge stations, and all amenities on Chiswick High Road.

### Features

- Private Development
- Six Bedrooms
- Four Bathrooms
- Concierge
- Off-Street Parking
- Private Garden



## Redcliffe Gardens, W4

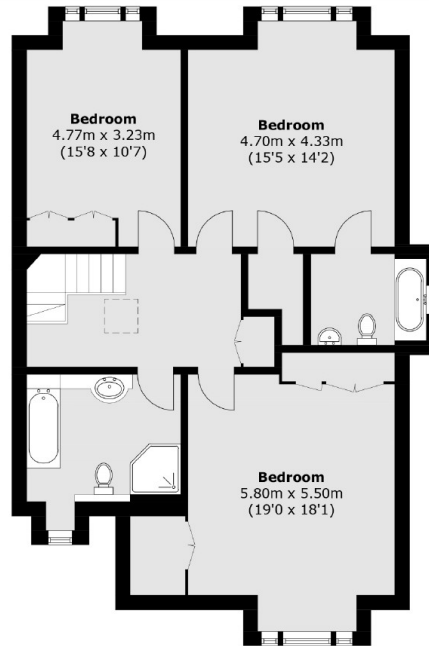
Within a private development of semi-detached houses next to the river, Redcliffe Gardens is the perfect haven away from the busy High Road and ideal for a young family.

There is tons of living space with a double reception room and separate kitchen. The six bedrooms are arranged over two floors and the four bathrooms really help with the morning rush.

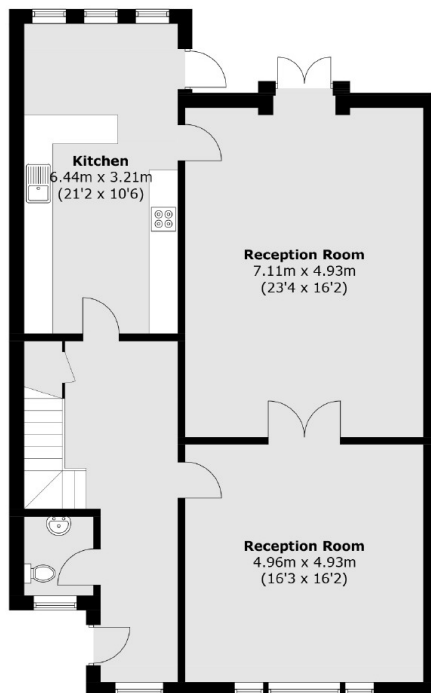
The south facing garden is great for the kids and there is also allocated parking for two cars as well as an on-site concierge service.



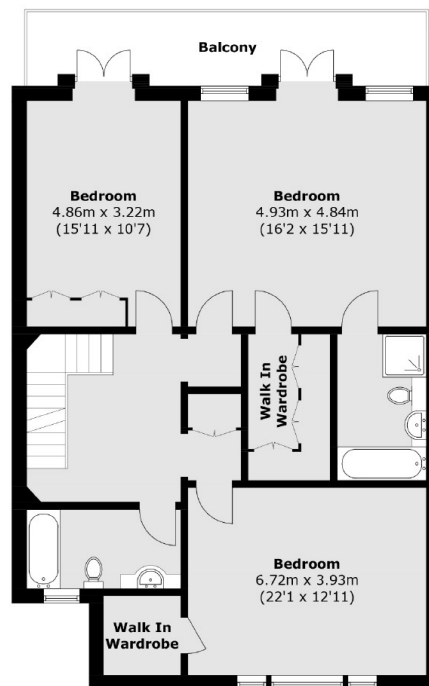
# Redcliffe Gardens, London, W4



**Second Floor**



**Ground Floor**



**First Floor**

Total area (approx.): 287.8 sq. m (3,097.9 sq. ft)  
Balcony area (approx.): 11.9 sq. m (128.1 sq. ft)