



Flat 7 Bellefield House Hilperton Road
Trowbridge BA14 7FP

Monthly Rental Of £895



Wrights Residential, 24 Fore Street , Trowbridge, BA14 8ER
Phone: 01225 755553, Email: enquiries@wrightsresidential.co.uk
www.wrightsresidential.co.uk

Two bedroom first floor apartment

Grade 2 listed building

Allocated parking space

Available from early July

Close to Trowbridge Town centre and railway station

Electric heating

Visitor parking

Unfurnished

This two bedroom first floor apartment is situated within a Grade II listed property, close to Trowbridge town centre and railway station. Features include electric heating, open plan kitchen/living room and allocated parking. Available from early July, unfurnished.

The property comprises

Hall

With wall mounted electric storage heater.

Open plan lounge/kitchen 17' 3" x 16' 3" (5.26m x 4.95m)

With wall mounted electric storage heater, television point, a range of eye level and base units, rolled edge worktops with tiled splashbacks, integrated double oven, ceramic hob and extractor hood, integrated fridge freezer, dishwasher and washer/dryer, feature window to the front and sash window to the side.

Bedroom 1 11' 9" x 11' 2" (3.58m x 3.40m)

With wall mounted electric storage heater and sash window to the rear.

Bedroom 2 6' 3" x 11' 2" (1.91m x 3.40m)

With wall mounted electric storage heater, airing cupboard and sash window to the rear.

Shower Room

With white suite comprising large shower enclosure with mains shower, low level w.c, pedestal hand basin, heated towel rail and sash window to the rear.

Externally

One allocated parking space. Visitors parking also available.

Council tax

The property is currently in council tax band C.

Energy Performance

The current EPC rating is D (56)

Services

Mains electricity, water and drainage are connected. The property is heated by electric storage heaters. Please note that the Agent has not tested any appliances.

Broadband

Standard available (source - Ofcom) Predicted maximum download speed - 18Mbps

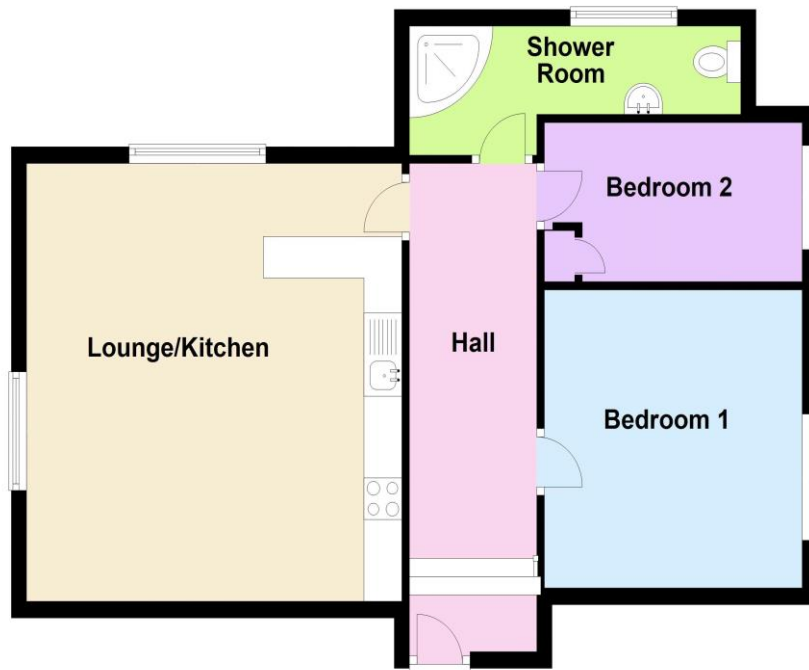
Mobile phone coverage

Outdoor coverage is likely - source Ofcom.



First Floor

Approx. 61.4 sq. metres (660.8 sq. feet)



Total area: approx. 61.4 sq. metres (660.8 sq. feet)