



**OVER 60?**

Secure this property  
for up to **59% less!**

**Guide Price**  
**£180,000**

**Leasehold**

1x  1x  1x 

**Chipstead Close, Sutton,  
Surrey, SM2**

**cubitt & west**  
Helping you move forwards



## Main features

- No onward chain
- Off street parking, including plenty of space for visitors
- Overton Park within short walking distance
- Scope to improve and make your own
- Quiet cul-de-sac location

## Accommodation

### GROUND FLOOR

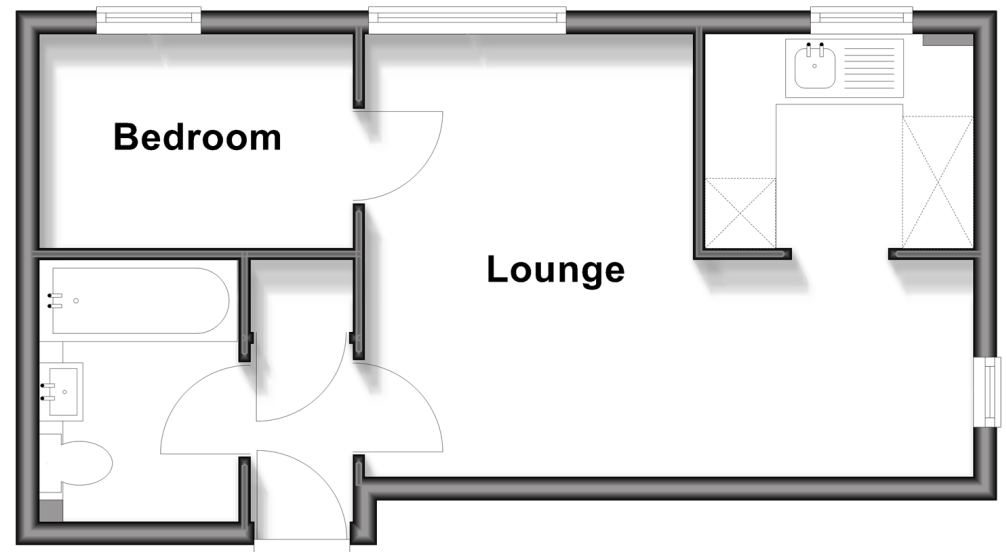
- Entrance Hall
- Lounge: 16'10 x 12'2 (5.13m x 3.71m)
- Kitchen: 7'5 x 5'6 (2.26m x 1.68m)
- Bedroom : 8'8 x 6'4 (2.64m x 1.93m)
- Bathroom

### OUTSIDE

- Off Street Parking
- Communal Gardens

## Ground Floor

Approx. 31.1 sq. metres (334.8 sq. feet)



Call Sutton - 020 8661 0330 ■ [cubittandwest.co.uk](http://cubittandwest.co.uk)

■ Legal advice should be taken to verify fixtures/fittings, planning, alterations and/or lease details  
 ■ Through a Homewise Home For Life Plan people aged 60+ can secure this property for up to 50% less, by purchasing a Lifetime Lease.

■ Appliances & services are untested, dimensions are approximate and floor plans are not to scale



22018243/20250920/CR/KWK