



STEVEN ROSENTHAL

exp[®] UK

@steven.rosenthal@exp.uk.com

🌐.stevenrosenthal.exp.uk.com

📞 07884 131 817

22 Edinburgh Avenue, Mill End, Rickmansworth, WD3 8LB

Offers Over £550,000

🛏️ 4 🚿 2 🛋️ 2



- Superb family home
- Well presented four bedroom semi detached house
- Bright and spacious living room and conservatory
- Modern open plan kitchen / dining room
- Ground floor shower / utility room with W/C
- Welcoming entrance hall
- Stylish family bathroom and additional cloakroom on first floor
- Generous sized landscaped garden
- Off street parking
- Excellent local primary and secondary schools



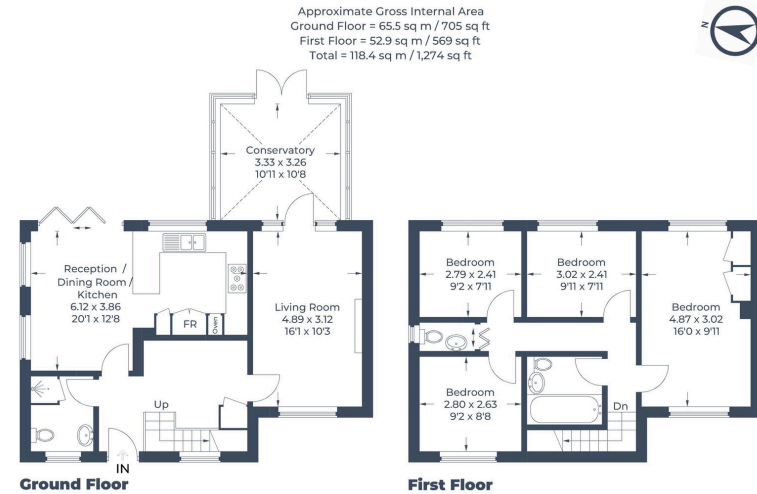


Illustration for identification purposes only, measurements are approximate, not to scale.
 © C3 Property Marketing

A modern four-bedroom semi-detached house, ideally located in a popular residential area of Rickmansworth. This neatly presented property offers generous living space throughout. The welcoming entrance hall provides excellent storage options and leads to a contemporary open-plan kitchen/dining room featuring bi-fold doors that open onto the rear garden - great for entertaining. There is also a bright and spacious living room and a versatile conservatory. A modern shower/utility room with a W/C completes the ground floor. Upstairs, the property boasts four well-proportioned bedrooms, a stylish family bathroom, and a conveniently located cloakroom, all accessible from the landing. Externally, the home benefits from off-street parking and a fantastic landscaped rear garden, perfect for outdoor dining and a safe space for children to play.

