

Appledore Avenue

Ruislip • Middlesex • HA4 0UT
Offers In Excess Of: £510,000



coopers
est 1986

Appledore Avenue

Ruislip • Middlesex • HA4 0UT

Offered to the market chain free, this three-bedroom terraced 'B' Type Manor Home is situated on Appledore Avenue in South Ruislip, providing an excellent opportunity for families, first-time buyers and investors alike. The ground floor comprises a bright and spacious through lounge measuring over 19ft in length, creating ample space for both living and dining areas. To the rear, the property benefits from a separate galley kitchen as well as a dining room and an attractive sun room, providing additional reception space and pleasant views over the garden. To the first floor are three bedrooms, including a generous principal bedroom with bay window, a well-proportioned second bedroom, a third single bedroom ideal as a child's room, home office or nursery. Completing the first floor is the family bathroom. Further benefits include gas central heating, double glazing, and excellent potential for a purchaser to personalise and enhance the accommodation to their own requirements, subject to the usual consents. Appledore Avenue is conveniently located for South Ruislip's shopping and transport facilities, including South Ruislip Station (Central Line and Chiltern Railways), local schools, parks and amenities, making it an ideal location for commuters and growing families.

CHAIN FREE

TERRACED 'B' TYPE MANOR HOME

THREE BEDROOMS

FAMILY BATHROOM

LIVING ROOM

EXTENDED AT THE REAR

PRIVATE GARDEN

DINING ROOM

QUIET ROAD

870 SQ.FT. TOTAL

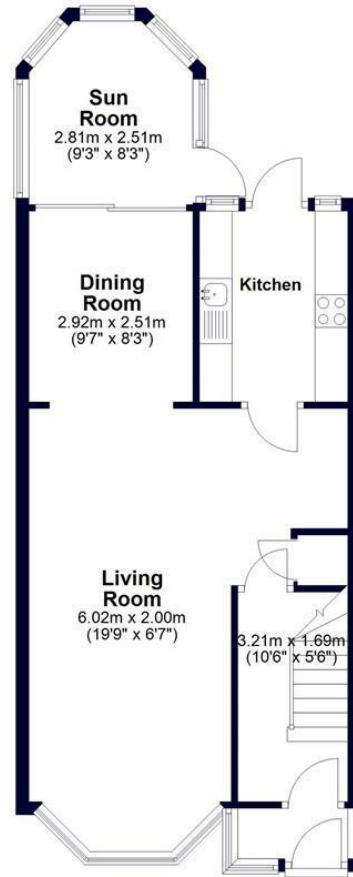
These particulars are intended as a guide and must not be relied upon as statements of fact. Your attention is drawn to the Important Notice on the last page.





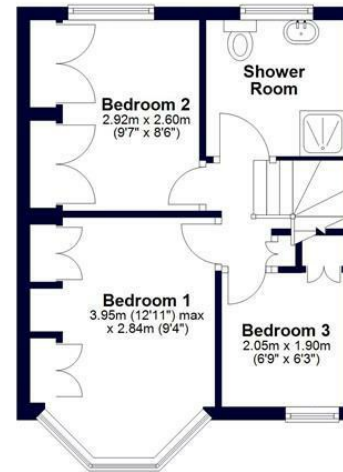
Ground Floor

Approx. 51.8 sq. metres (558.0 sq. feet)



First Floor

Approx. 29.0 sq. metres (312.2 sq. feet)



Total area: approx. 80.8 sq. metres (870.2 sq. feet)

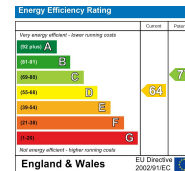


Whilst every effort has been made to ensure the accuracy of this floor plan, measurements of doors, windows, rooms and other items are approximate and no responsibility is taken for any errors. This plan is for illustrative purposes only and should be used as such by any prospective purchaser.
©Property Pot. Produced on behalf of Coopers Residential.



71 Victoria Road, Ruislip Manor,
Middlesex, HA4 9BH
ruislipmanor@coopersresidential.co.uk

CoopersResidential.co.uk



Important Notice: These particulars, whilst believed to be accurate are set out as a general outline only for guidance and do not constitute any part of an offer or contract. Intending purchasers should not rely on them as statements or representation of fact, but must satisfy themselves by inspection or otherwise has the authority to make or give any representation or warranty in respect of the property.