

5a Shelfanger
Road
Diss
IP22 4EH



5a Shelfanger Road

Guide Price £250,000

Victorian Stable Conversion in The Heart Of Diss..

Tucked away just a short stroll from the heart of Diss, 5A Shelfanger Road forms part of an attractive converted Victorian stable block, blending period character with stylish contemporary living in a wonderfully convenient setting.

Recently renovated throughout to a high standard, the property offers beautifully presented accommodation with a light and airy feel, whilst still retaining much of its original charm and heritage through exposed beams and character features. French doors from both the sitting room and kitchen create an effortless connection between the indoor and outdoor spaces, opening onto a private enclosed courtyard garden — an ideal spot for morning coffee, summer dining or simply unwinding at the end of the day.

The ground floor centres around a spacious open-plan living and dining area, complemented by a thoughtfully designed modern kitchen fitted with quality integrated appliances and ample storage. A useful utility/cloakroom completes the downstairs accommodation.

Upstairs, there are two generous double bedrooms, both filled with natural light from Velux windows and enhanced by the exposed timbers that reflect the building's Victorian origins. The bathroom has been stylishly finished with contemporary fittings and tasteful detailing.

Externally, the property benefits from private parking and a low-maintenance courtyard garden, all set within an established and desirable part of town.

Shelfanger Road is particularly well placed for enjoying everything Diss has to offer. The historic market town centre, with its independent shops, cafés, restaurants and the picturesque Mere, is within easy reach, whilst Diss railway station provides direct mainline services to Norwich and London Liverpool Street, making the property equally appealing for commuters and those seeking a well-connected Norfolk home.

Surrounded by attractive countryside walks and the peaceful rural scenery for which the area is so well known, 5A Shelfanger Road offers the rare combination of character, convenience and modern comfort.

Agents notes...

A pre-recorded walkaround tour is available for this property

EPC to follow

Local Authority
South Norfolk

Council Tax Band A

EPC Rating



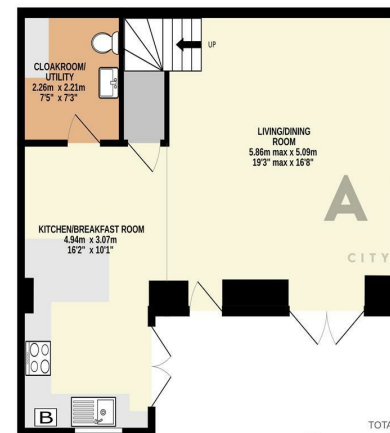
Contact

01603 964777

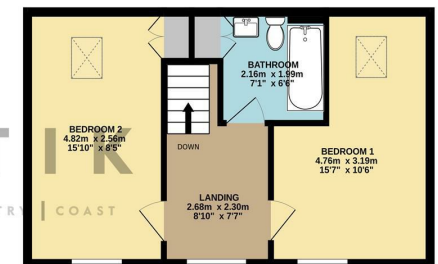
enquiries@attikccc.co.uk

www.attikccc.co.uk

GROUND FLOOR
50.1 sq.m. (539 sq.ft.) approx.



1ST FLOOR
38.6 sq.m. (415 sq.ft.) approx.



TOTAL FLOOR AREA: 88.7 sq.m. (955 sq.ft.) approx.

Whilst every attempt has been made to ensure the accuracy of the floorplan contained here, measurements of doors, windows, rooms and any other items are approximate and no responsibility is taken for any error, omission or mis-statement. This plan is for illustrative purposes only and should be used as such by any prospective purchaser. The services, systems and appliances shown have not been tested and no guarantee as to their operability or efficiency can be given.
Made with Metropix ©2026