






Kilburn Place, Kilburn,  
NW6

Asking Price £585,000



 2  2  1 

# Kilburn Place, Kilburn, NW6

Asking Price £585,000



## Summary Description

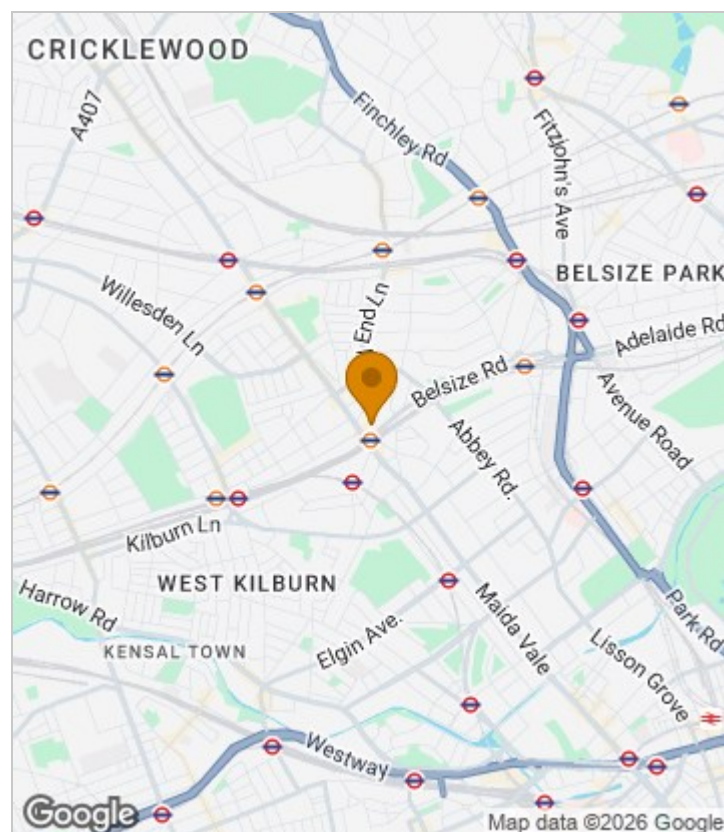
Welcome to this splendid top floor flat boasting a generous open plan living area, perfect for both relaxation and entertaining. With a spacious layout of 931 square feet, it offers ample room for comfortable living.

The flat features two well-proportioned bedrooms, including a master bedroom complete with an en-suite bathroom, providing a private sanctuary for your convenience. The additional bathroom ensures that guests and family members have their own space as well. There is a third study/ single bedroom giving further flexibility.

As a share of freehold property, this flat presents a unique opportunity for those looking to invest in a home with a sense of ownership and community. The lack of a chain means that you can move in without delay, making it an ideal choice for first-time buyers or those seeking a hassle-free move.

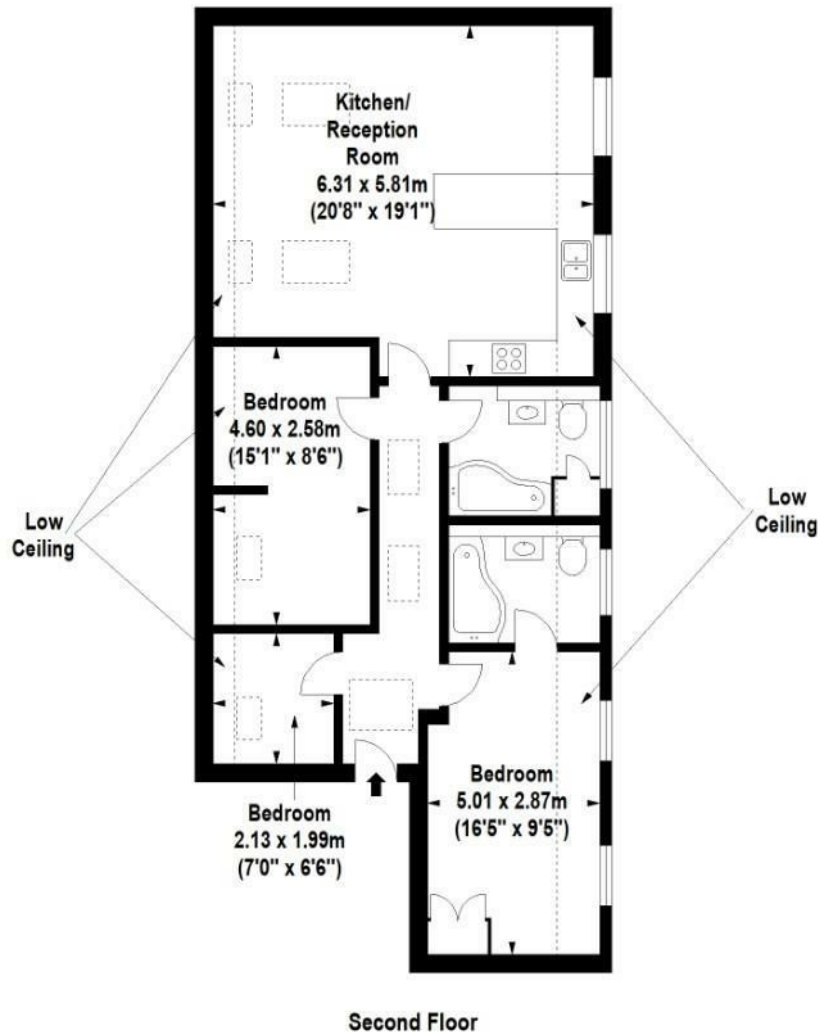
Situated in a vibrant area of London, this flat is well-connected to local amenities, transport links, and green spaces, enhancing your living experience. Whether you are looking for a stylish home or a smart investment, this property is sure to impress.

## Area Map





# Floor Plan



For Identification Purposes Only. Not To Scale. © www.totalvista.uk 2026



**Kilburn Place, NW6**

Approx. Gross Internal Area  
86.49 Sq M - 931 Sq Ft



## Energy Efficiency Graph

Energy Efficiency Rating		Current	Potential
Very energy efficient - lower running costs			
(92 plus) <b>A</b>			
(81-91) <b>B</b>			
(69-80) <b>C</b>			
(55-68) <b>D</b>			
(39-54) <b>E</b>			
(21-38) <b>F</b>			
(1-20) <b>G</b>			
Not energy efficient - higher running costs			
<b>England &amp; Wales</b>	EU Directive 2002/91/EC		

## Viewing

Please contact our Sales QP Office on 0207 604 4040 if you wish to arrange a viewing appointment for this property or require further information.

For further information contact:

Sales QP, 2a Brondesbury Road, London, NW6 6AS

Tel: 0207 604 4040 Email: [info@jorgensenturner.com](mailto:info@jorgensenturner.com) <https://www.jorgensenturner.com/>

## Disclaimer

These particulars, whilst believed to be accurate are set out as a general outline only for guidance and do not constitute any part of an offer or contract. Intending purchasers should not rely on them as statements of representation of fact, but must satisfy themselves by inspection or otherwise as to their accuracy. No person in this firm's employment has the authority to make or give any representation or warranty in respect of the property.