

Coombe Road New Malden KT3



- **Ground Floor Studio Apartment**
- **Spacious Reception Room**
- **Separate Kitchen**
- **Raised Bedroom Area**
- **En-Suite Bathroom**
- **Own Front Garden**

Price £240,000

This charming ground-floor studio apartment has been freshly redecorated, offering a bright and modern feel from the moment you step through your own private entrance. The layout is well-planned, featuring a spacious reception room that flows seamlessly into a separate, dedicated kitchen. The clever design continues with a raised level, creating a distinct and intimate bedroom sanctuary complete with its own en-suite bathroom. Outside, you can enjoy your own private front garden, providing an outdoor escape. With the added convenience of off-street parking, whilst also being conveniently located within a short walking distance of New Malden high street as well as the train station. This spacious home perfectly balances privacy, comfort, and urban convenience. EPC C. Council Band C.

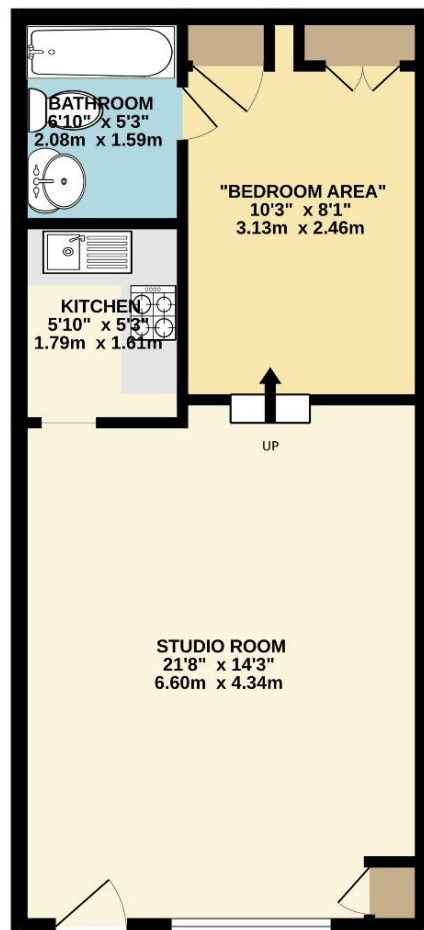








GROUND FLOOR
455 sq.ft. (42.3 sq.m.) approx.



TOTAL FLOOR AREA : 455 sq.ft. (42.3 sq.m.) approx.

Whilst every attempt has been made to ensure the accuracy of the floorplan contained here, measurements of doors, windows, rooms and any other items are approximate and no responsibility is taken for any error, omission or mis-statement. This plan is for illustrative purposes only and should be used as such by any prospective purchaser. The services, systems and appliances shown have not been tested and no guarantee as to their operability or efficiency can be given.

Made with Metropix ©2026