



## Holmes Road, TW1

£1,390,000

Offered with no onward chain, this fantastic period family home is split over three floors and consists of a large reception room, an open plan kitchen/dining room, utility room, four bedrooms and two bath/shower rooms.

Holmes Road is ideally located for local schools, moments from River Thames and close to Strawberry Hill mainline station with great links into London Waterloo.

### Features

- Four Double Bedrooms
- Underfloor Heating
- Utility Room
- Private Garden
- Summer House
- No Onward Chain



## Holmes Road, TW1

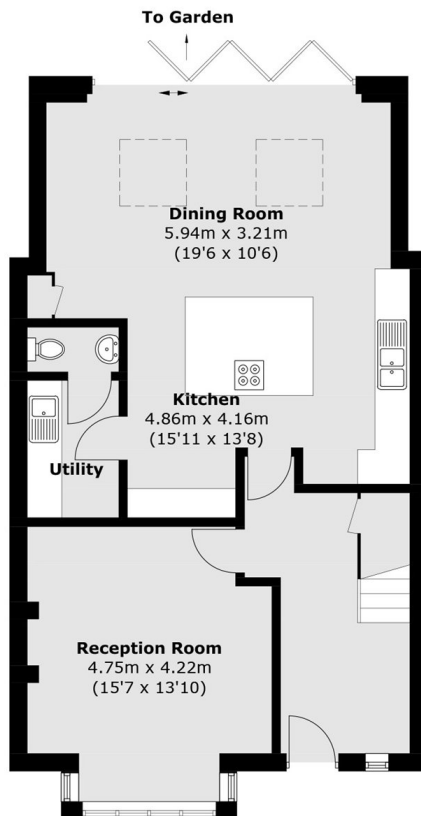
Presented in immaculate condition throughout is this four double bedroom family home which is split over three floors and set in the heart of Strawberry Hill.

The ground floor consists of a large reception room with a working wood burning stove, a stunning open plan kitchen/dining room with underfloor heating and bi-folding doors, a large utility room and a downstairs WC.

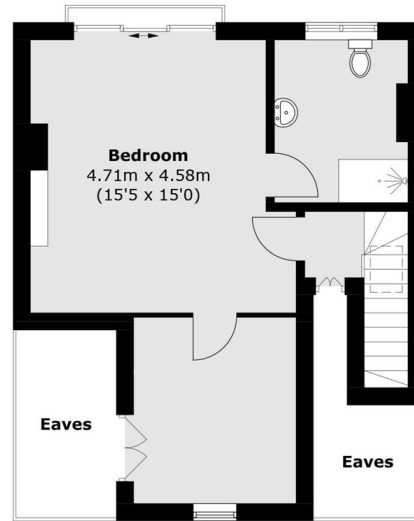
To the first floor there are three double bedrooms, a large four-piece bathroom suite and on the top floor there is the master bedroom with a Juliet balcony, a dressing room and modern en suite. To the rear there is a private garden with a summer house.



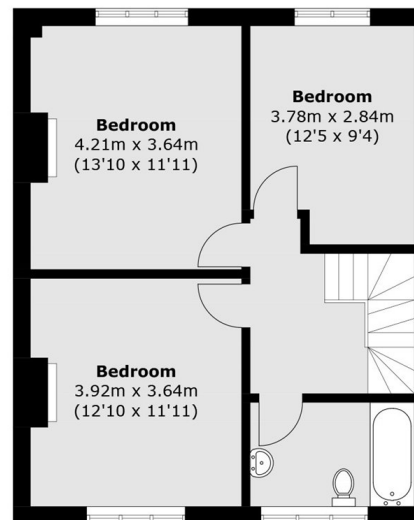
# Holmes Road, Strawberry Hill, TW1



**Ground Floor**



**Second Floor**



**First Floor**

Total area (approx.): 171.6 sq. m (1,847.0 sq. ft)  
(Excluding Eaves)