

Aycliffe Road, Borehamwood
Guide Price £495,000 (Freehold)



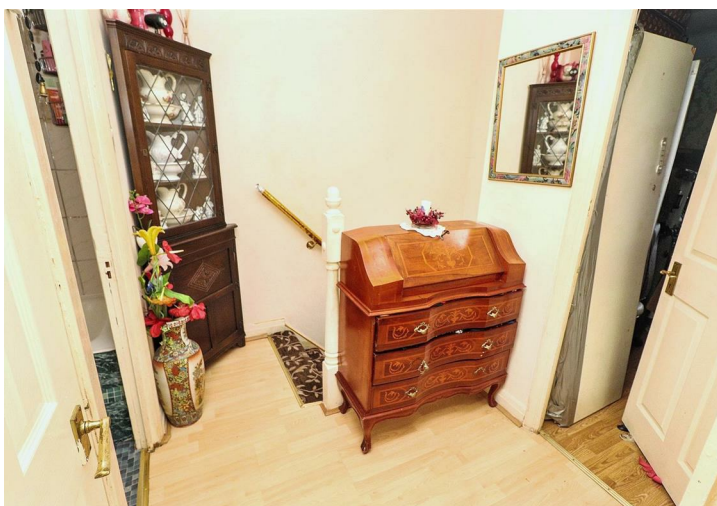
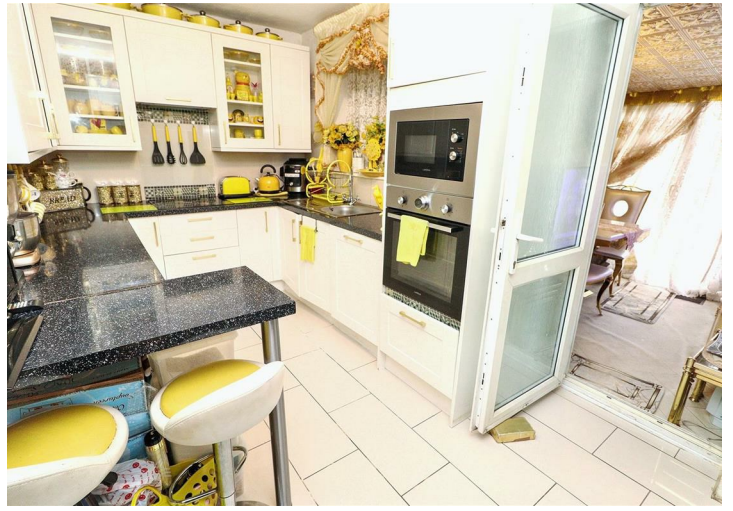
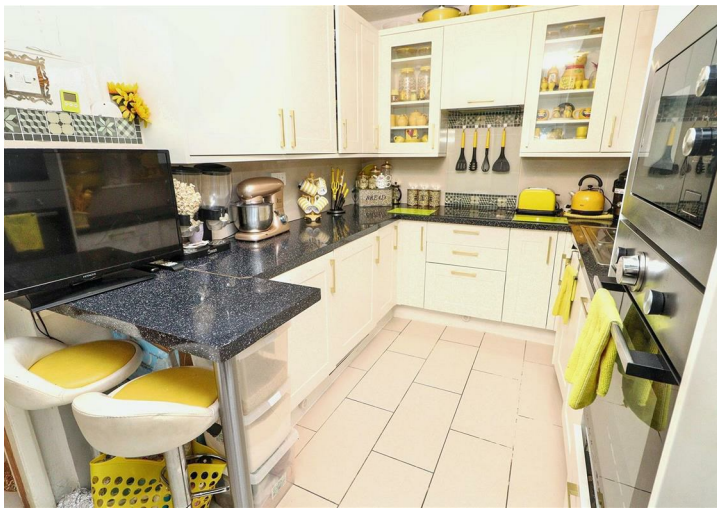
This 3 bedroom home is located in on the North side of Borehamwood, approximately 1 mile from the high street and mainline station, yet a stone's throw from local shops, park, bus routes and places of worship. This well loved property includes:- entrance hall, lounge, kitchen/breakfast room, conservatory set up as formal dining room and a downstairs W/C. To the first floor are 3 bedrooms and a family bathroom. Externally the property offers a rear garden with patio and large storage shed as well as off street parking for two cars.

020 3764 2222
www.village-estates.co.uk



Village Estates
The Corner Shop High Street, Elstree
Herts WD6 3BY

Important Note: These particulars do not form part of any contract. All measurements are approximate and should not be relied upon. All prices quoted are strictly subject to contract.







Approx Gross Internal Area
78 sq m / 844 sq ft



Ground Floor
Approx 45 sq m / 479 sq ft

This floorplan is only for illustrative purposes and is not to scale. Measurements of rooms, doors, windows, and any items are approximate and no responsibility is taken for any error, omission or mis-statement. Icons of items such as bathroom suites are representations only and may not look like the real items. Made with Made Snappy 360.



Energy Efficiency Rating		Current	Potential
Very energy efficient - lower running costs			
(92 plus) A			
(81-91) B			
(69-80) C			
(55-68) D			
(39-54) E			
(21-38) F			
(1-20) G			
Not energy efficient - higher running costs			
England & Wales		EU Directive 2002/91/EC	