



HOMES BY VICTORIA
ESTATE AGENCY

Spetchley Close, Crabbs Cross, Redditch, B97 5NB

Offers Over £290,000

3 1 1



An elegant and beautifully maintained three-bedroom link-detached family residence, nestled within the highly desirable enclave of Crabbs Cross, Redditch. A MUST VIEW

homesbyvictoria.co.uk

victoria@homesbyvictoria | 07833 136521

FOR M HOMES MIDLANDS LIMITED trading as Homes By Victoria Company Number: 13688840 VAT no: 470190115



HOMES BY VICTORIA
ESTATE AGENCY

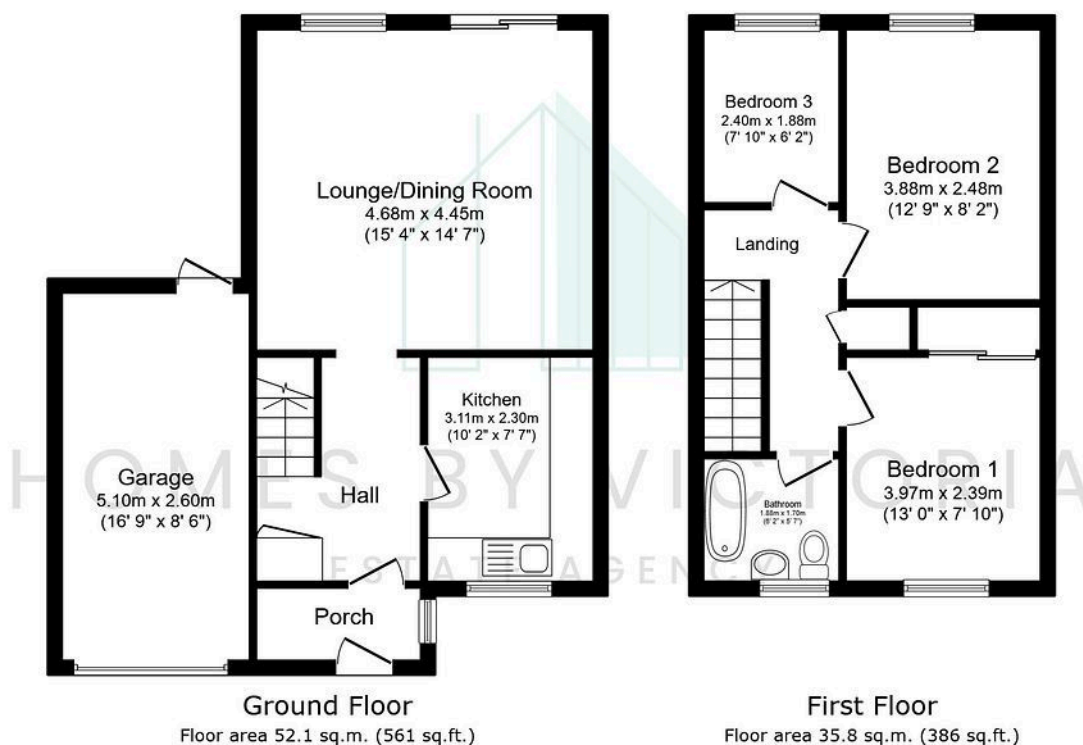


HOMES BY VICTORIA

ESTATE AGENCY

Key Features

- SOUGHT AFTER LOCATION
- LINK DETACHED FAMILY HOME
- FITTED KITCHEN
- LOUNGE / DINER
- THREE BEDROOMS
- FAMILY BATHROOM
- GENEROUS REAR GARDEN
- GARDEN ROOM
- SINGLE GARAGE AND DRIVEWAY
- COUNCIL TAX BAND C



Total floor area: 88.0 sq.m. (947 sq.ft.)

This floor plan is for illustrative purposes only. It is not drawn to scale. Any measurements, floor areas (including any total floor area), openings and orientations are approximate. No details are guaranteed, they cannot be relied upon for any purpose and do not form any part of any agreement. No liability is taken for any error, omission or misstatement. A party must rely upon its own inspection(s).