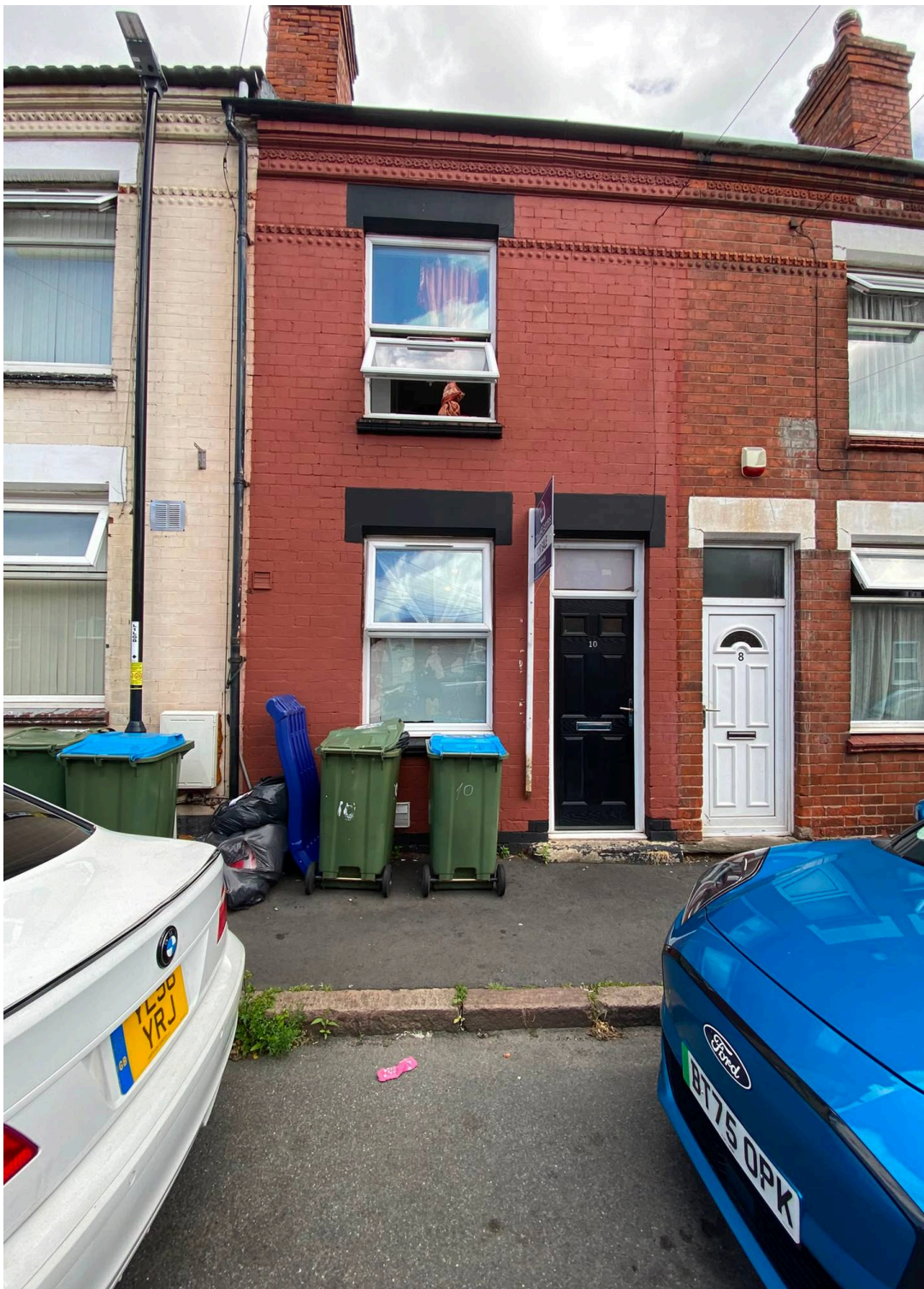




10 Highfield Road, Coventry  
£180,000





## 10 Highfield Road

Coventry

Spacious three-bedroom terrace near Coventry City Centre with flexible layout, garden, strong rental potential, and no upward chain. Ideal for investors or buyers seeking city convenience.

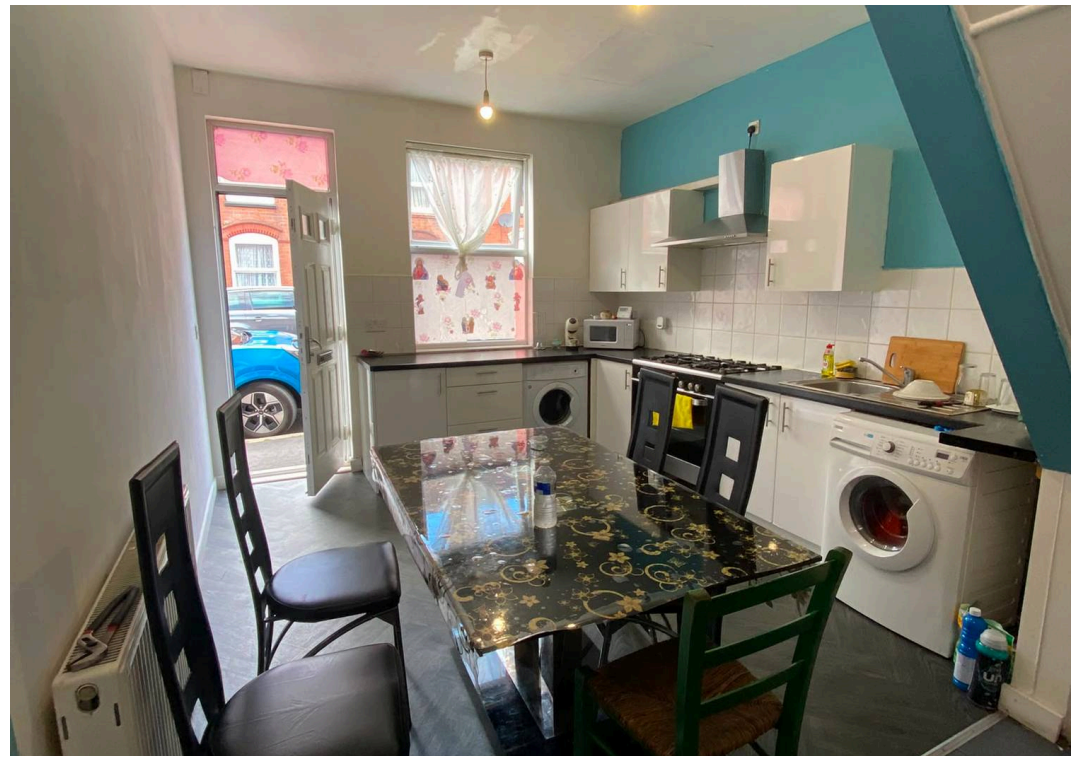
Council Tax band: A

Tenure: Freehold

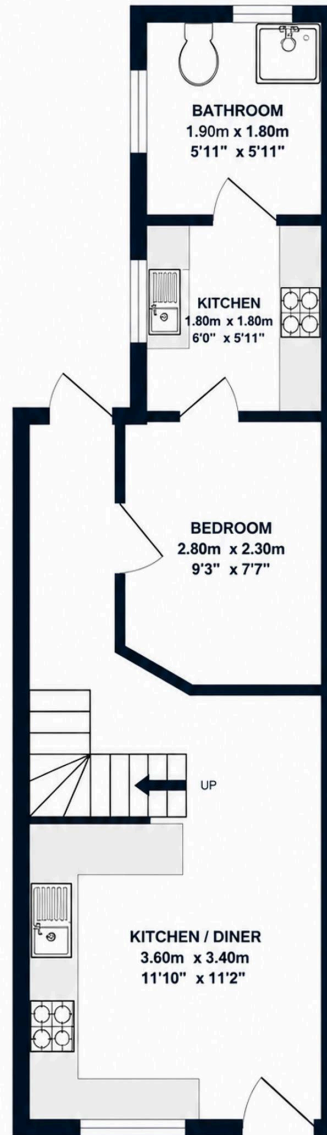
EPC Energy Efficiency Rating: E

EPC Environmental Impact Rating: E

- No Upward chain!
- Potential income of £1950 a month
- Investment Opportunity
- Three lettable rooms
- Three Shower Rooms (Two En-Suite)
- Modern Kitchen/Dining Room
- Generous Rear Garden
- 15 mins walk to Coventry City Centre



**GROUND FLOOR**  
Approx. 36.9 sq.m. (397 sq.ft.)



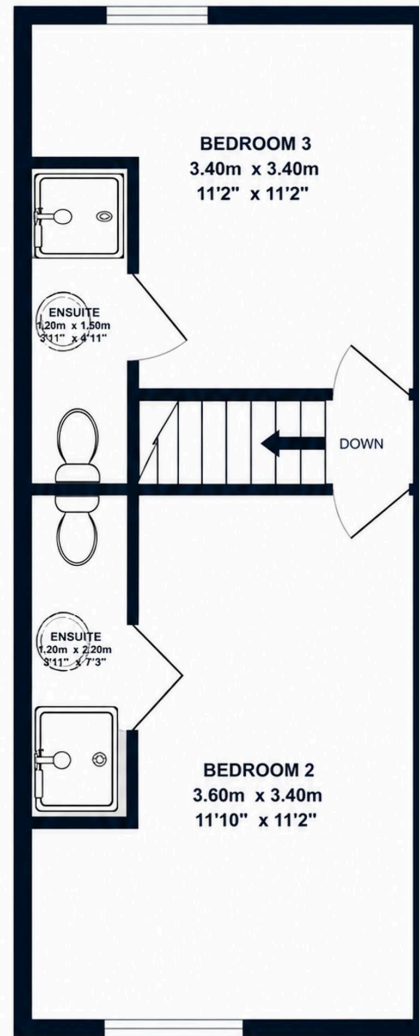
**TOTAL FLOOR AREA:**  
APPROX. 36.9 SQ.M. (397 SQ.FT.)

This floorplan is for illustrative purposes only.  
Measurements are approximate and not to scale.  
Made with care by Raj Dassaur – Partner Agent,  
Nestled Warwick.

**RAJ DASSAUR**  
PARTNER AGENT



**FIRST FLOOR**  
Approx. 26.6 sq.m. (287 sq.ft.)



**TOTAL FLOOR AREA:**  
APPROX. 26.6 SQ.M. (287 SQ.FT.)

This floorplan is for illustrative purposes only.  
Measurements are approximate and not to scale.  
Made with care by Raj Dassaur – Partner Agent,  
Nested Warwick.

**RAJ DASSAUR**  
PARTNER AGENT

