

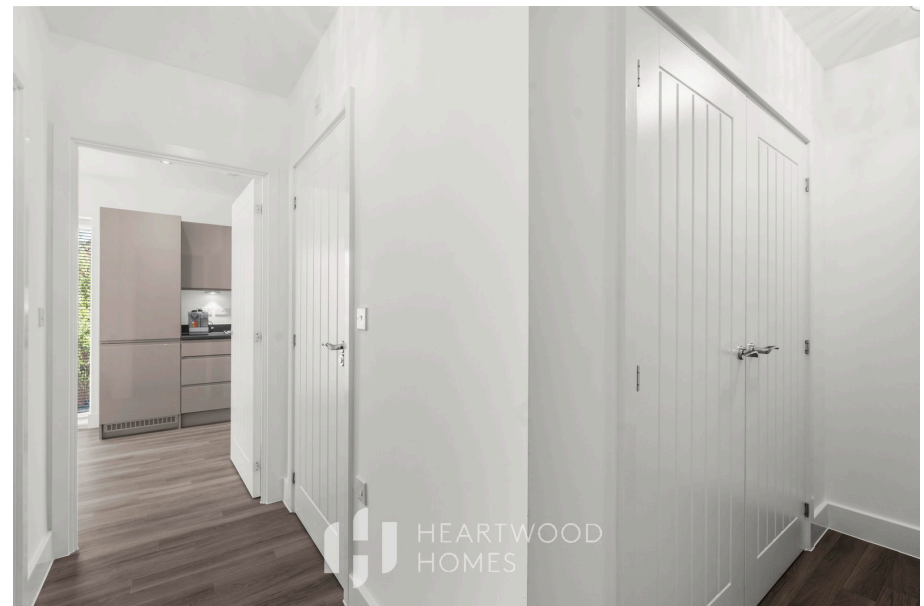


HEARTWOOD  
HOMES

# Hansell Gardens, St Albans, AL1 5GG

£325,000

🛏️ 1 🪑 1 🚗 1



A beautifully presented one bedroom apartment finished to an exceptional standard, offering contemporary living in truly immaculate, "like new" condition throughout.

This stylish home has been thoughtfully designed with modern lifestyles in mind, featuring a bright and spacious open plan living area that seamlessly combines lounge, dining, and kitchen space. The sleek, fully fitted kitchen boasts high quality integrated appliances and clean, modern lines, creating a perfect setting for both everyday living and entertaining.

The generous double bedroom is elegantly finished, providing a calm and comfortable retreat with ample space for storage. A pristine, contemporary bathroom suite completes the accommodation, fitted with high spec fixtures and a refined, modern aesthetic.

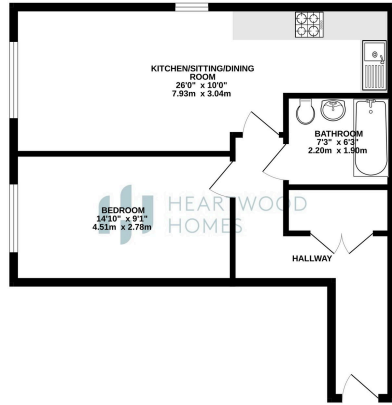
Externally, the property benefits from one allocated parking space, adding a high level of convenience. Residents also enjoy access to stunning, well maintained communal gardens, thoughtfully landscaped and naturally well lit, offering a peaceful outdoor environment to relax and unwind.

Further enhancing the appeal, the development incorporates solar panels that contribute to the supply of communal lighting, supporting energy efficiency and sustainability.

With excellent natural light throughout, neutral décor, and a true turnkey finish, this outstanding apartment is ideal for first-time buyers, professionals, or investors seeking a home ready to move straight into.



2ND FLOOR  
527 sq.ft. (49.0 sq.m.) approx.



TOTAL FLOOR AREA: 527 sq.ft. (49.0 sq.m.) approx.  
When every effort has been made to ensure the accuracy of the figures contained here, Heartwood Homes cannot be held responsible for any errors or omissions. The actual, specific and approximate floor area may vary and any guarantee is given subject to the applicable building regulations.



- Beautifully presented one bedroom apartment finished to an exceptional, "like new" standard
- Fully fitted kitchen with high quality integrated appliances and modern design
- Contemporary bathroom with high spec fixtures and elegant finishes
- One allocated parking space providing added convenience
- Energy efficient development featuring solar panels supporting communal lighting
- Bright and spacious open plan living area combining lounge, dining, and kitchen
- Spacious double bedroom offering a calm and comfortable retreat with ample storage space
- Fresh and neutral décor throughout, enhancing the fresh and neutral décor
- Access to well maintained, landscaped communal gardens for outdoor relaxation

