



Asking Price Of £280,000

Marldon Road,  
Torquay, TQ2 7EF

Situated in the sought after Shiphay area, located close to a schools, Torbay hospital, the seafront and town centre. A two bedroom semi detached bungalow with ample parking now in need of some upgrading and modernisation. The property comprises of an open plan kitchen /diner area, living room, two double bedrooms and bathroom. Outside at the front is parking for 3/4 cars and there is a patio and lawn area at the back.



Door into:-

PORCH Cupboards with fuse box.

HALLWAY Radiator and picture rails.

LIVING ROOM Bay window to front, fire surround with inset gas fire and two radiators.

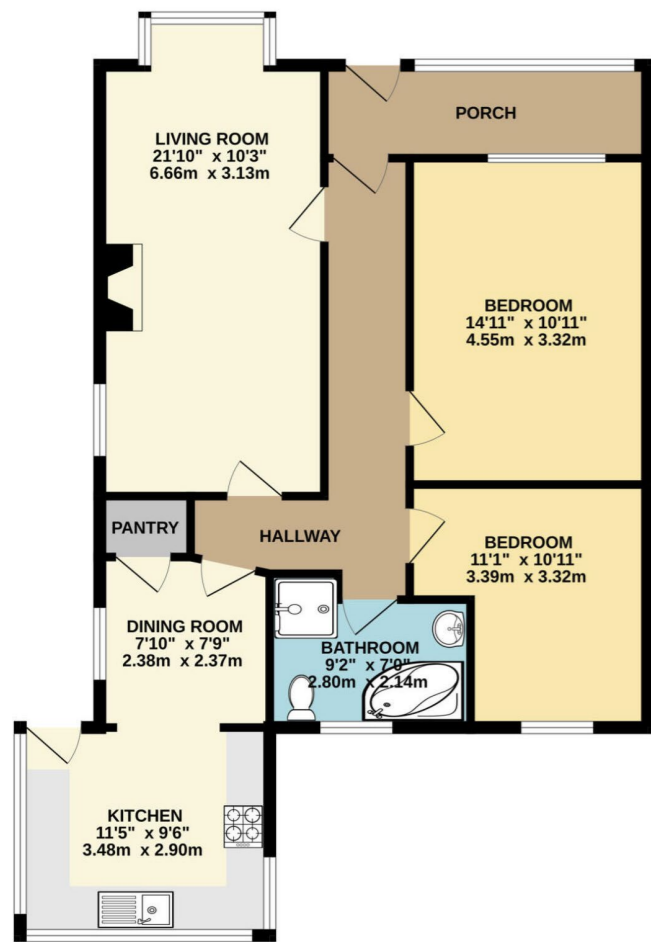
OPEN PLAN KITCHEN/DINER Wood effect drawers and cupboards over and under surfaces, space for washing machine, space for fridge/freezer, larder/pantry cupboard, opening in to a dining area with disco for 4/6 seater dining table.

BEDROOM ONE A double bedroom with window to front and radiator.

BEDROOM TWO Another double with window out to back garden.

BATHROOM Comprising of corner bath, low level WC, Walk in shower and radiator.

OUTSIDE At the front is parking for 3/4 cars, side access to back garden. At the back is a level patio and lawned area. Two garden sheds.



Address 'Marldon Road, Torquay, TQ2 7EF'

Tenure 'Freehold'

Council Tax Band 'C'

EPC Rating '66 | D'

Taylor's Estate Agents  
256 Torquay Road  
Paignton  
TQ3 2EZ