



**Guide Price**  
**£445,000**

**Freehold**

3x  1x  2x 

**Windsor Road, Ilford,  
Essex, IG1**

**OVER 60?**

Secure this property  
for up to **59% less!**

 **DOUGLAS  
ALLEN**  
Helping you move forwards



## Main features

- Terraced house with attractive entrance porch
- Off street parking
- Close to Ilford station
- Walking distance to Exchange Shopping Centre
- NO ONWARD CHAIN

## Accommodation

### GROUND FLOOR

- Entrance Porch
- Entrance Hall
- Lounge/Dining Room: 24'0 x 9'7 (7.32m x 2.92m)
- Kitchen: 9'0 x 7'0 (2.75m x 2.14m)

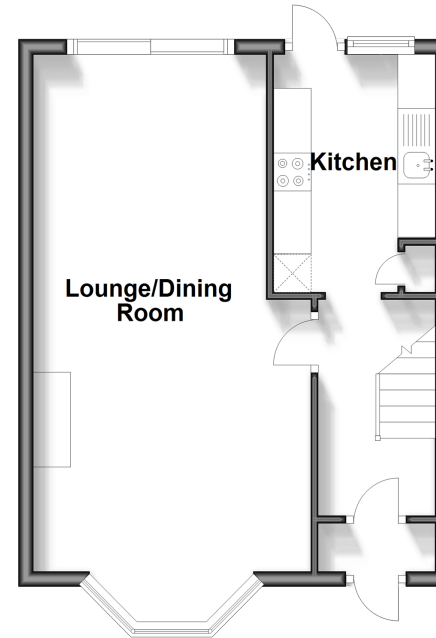
### FIRST FLOOR

- Landing
- Bedroom 1: 11'7 x 10'7 (3.53m x 3.23m)
- Bedroom 2: 11'1 x 8'3 (3.38m x 2.52m)
- Bedroom 3: 10'9 x 6'4 (3.28m x 1.93m)
- Bathroom

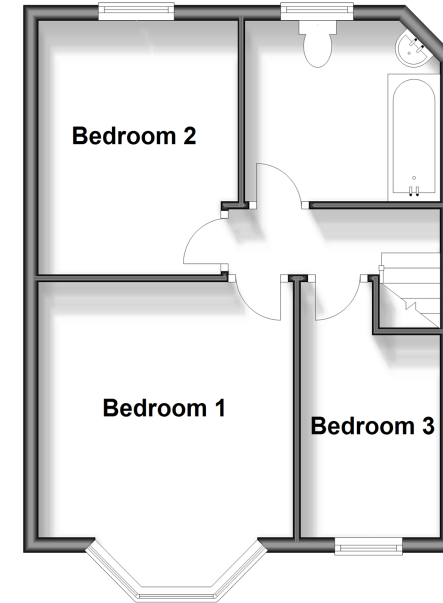
### OUTSIDE

- Rear Garden
- Off Street Parking

**Ground Floor**  
Approx. 37.0 sq. metres (398.2 sq. feet)



**First Floor**  
Approx. 36.8 sq. metres (396.5 sq. feet)



**Call Ilford - 020 8518 0044 ■ [douglasallen.co.uk](http://douglasallen.co.uk)**

■ Through a Homewise Home For Life Plan people aged 60+ can secure this property for up to 59% less, by purchasing a Lifetime Lease



52016786/20260325/CN/MS