



**The Annex Castle View, Palterton Chesterfield S44 6UQ**

**welcome to**

## **The Annex Castle View, Palterton Chesterfield**

A well-presented home offering a bright lounge, spacious kitchen/diner and handy downstairs WC, with two generous double bedrooms and a modern bathroom upstairs. With scenic surroundings and nearby walking routes which further enhance the property's appeal.

### **Front Of Property**

The front of property presents a smart, welcoming first impression, with a neat approach that leads directly onto the driveway. It's well-kept frontage sets the tone of the home which feels immediately inviting and easy to maintain.

### **Hall**

Stepping inside, the hall forms a natural introduction to the home. Light and open, it offers a smooth flow into the principal ground-floor rooms, with space to hang coats and store everyday essentials without feeling crowded.

### **Lounge**

The lounge offers a wonderfully comfortable retreat, with its broad layout allowing for flexible furniture arrangements. A large window draws in natural light, creating a warm, relaxing atmosphere perfect for unwinding in the evenings or hosting guests.

### **Kitchen / Dining Room**

The kitchen/dining room is a bright, sociable space designed for modern living. With generous proportions and room for a family dining table, it's the kind of area that naturally becomes the heart of the home, ideal for cooking, gathering, and entertaining. A well-planned layout ensures plenty of worktop space and storage, while the open feel keeps the room welcoming throughout the day.

### **Downstairs W/C**

The downstairs WC is neatly positioned for convenience, offering a modern suite and a practical touch for busy households and visiting guests.

### **Stairs / Landing**

The stairs and landing rise smoothly from the hall, leading to a bright, open landing that connects the

first-floor rooms.

### **Bedroom One**

The bedroom one is an impressively spacious main bedroom, easily accommodating a large bed alongside wardrobes and additional furniture. Its generous proportions create a peaceful, private retreat with room to personalise and unwind.

### **Bedroom Two**

Bedroom two is another well-sized double, ideal as a guest room, child's bedroom, or even a stylish home office. Its balanced layout makes furnishing straightforward and versatile.

### **Bathroom**

The bathroom is modern and well-appointed, featuring a full suite with bath, stand alone shower, wash basin and WC. A clean and thoughtful design make it both practical for everyday use and relaxing when you want a quiet soak.





***view this property online*** [williamhbrown.co.uk/Property/CSF105246](http://williamhbrown.co.uk/Property/CSF105246)



welcome to

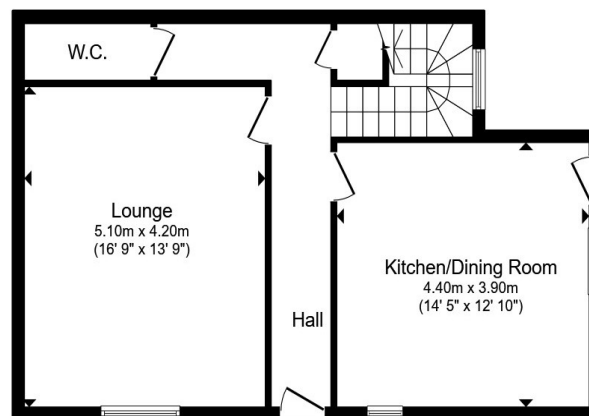
## The Annex Castle View, Palterton Chesterfield

- Council Tax Band - D
- Spacious Lounge
- Modern Kitchen / Diner
- Convenient Downstairs WC
- Two Well - Proportioned Double Bedrooms

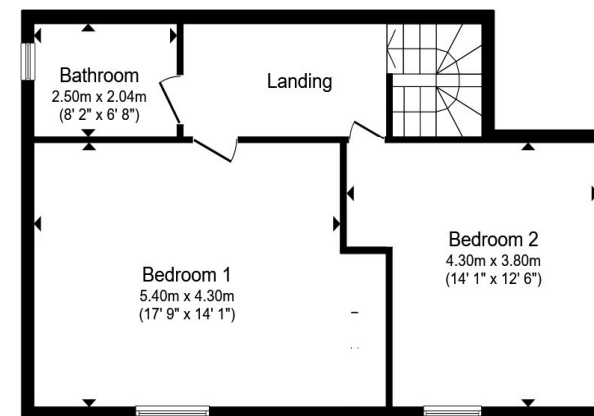
Tenure: Freehold EPC Rating: D

Council Tax Band: D

# £245,000



Ground Floor



First Floor

Total floor area 112.4 m<sup>2</sup> (1,209 sq.ft.) approx

This floor plan is for illustrative purposes only. It is not drawn to scale. Any measurements, floor areas (including any total floor area), openings and orientation are approximate. No details are guaranteed, they cannot be relied upon for any purpose and they do not form part of any agreement. No liability is taken for any error, omission or misstatement. A party must rely upon its own inspection(s). Powered by [www.propertybox.io](http://www.propertybox.io)



view this property online [williamhbrown.co.uk/Property/CSF105246](http://williamhbrown.co.uk/Property/CSF105246)



Property Ref:  
CSF105246 - 0004

1. MONEY LAUNDERING REGULATIONS Intending purchasers will be asked to produce identification documentation at a later stage and we would ask for your co-operation in order that there is no delay in agreeing the sale. 2. These particulars do not constitute part or all of an offer or contract. 3. The measurements indicated are supplied for guidance only and as such must be considered incorrect. Potential buyers are advised to recheck measurements before committing to any expense. 4. We have not tested any apparatus, equipment, fixtures or services and it is in the buyers interest to check the working condition of any appliances. 5. Where an EPC, or a Home Report (Scotland only) is held for this property, it is available for inspection at the branch by appointment. If you require a printed version of a Home Report, you will need to pay a reasonable production charge reflecting printing and other costs. 6. We are not able to offer an opinion either written or verbal on the content of these reports and this must be obtained from your legal representative. 7. Whilst we take care in preparing these reports, a buyer should ensure that his/her legal representative confirms as soon as possible all matters relating to title including the extent and boundaries of the property and other important matters before exchange of contracts.

William H Brown is a trading name of Sequence (UK) Limited which is registered in England and Wales under company number 4268443, Registered Office is Cumbria House, 16-20 Hockliffe Street, Leighton Buzzard, Bedfordshire, LU7 1GN. VAT Registration Number is 500 2481 05.

william h brown



01246 204492



[chesterfield@williamhbrown.co.uk](mailto:chesterfield@williamhbrown.co.uk)



6 Glumangate, CHESTERFIELD, Derbyshire, S40 1TP



[williamhbrown.co.uk](http://williamhbrown.co.uk)