



## Tolworth Road, KT6

£625,000

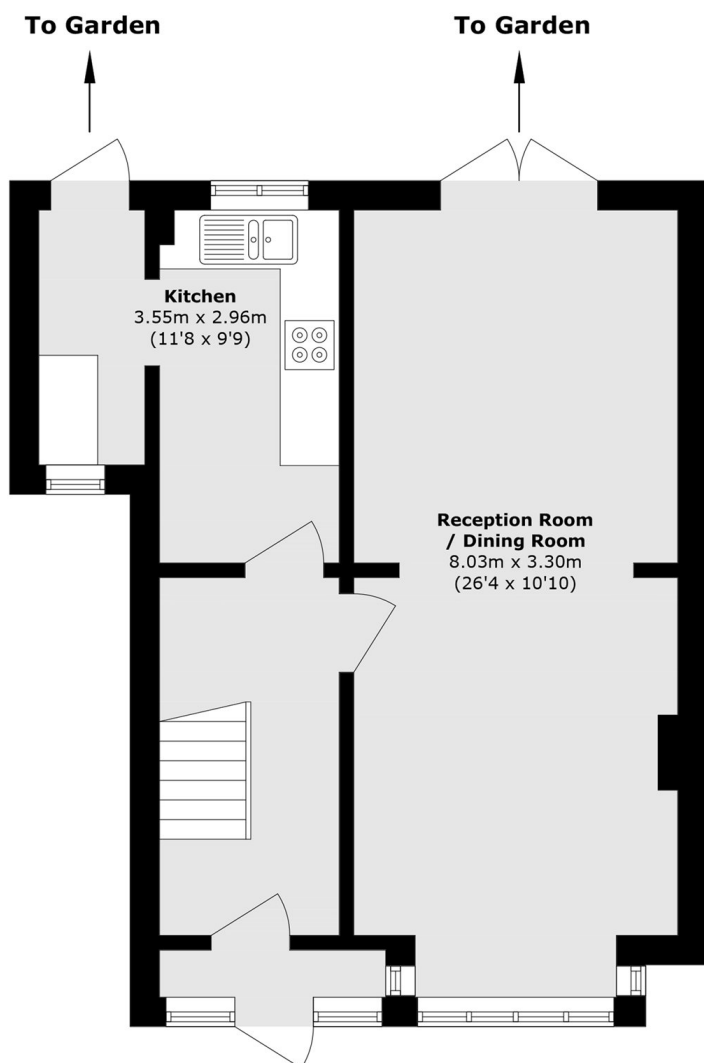
A detached three-bedroom family home with a large private garden and garage, offering excellent potential to extend (subject to the necessary planning permissions). The property currently comprises two spacious reception rooms, a fitted kitchen, three well-proportioned bedrooms and a family bathroom. To the rear is a generous private garden, while the garage provides additional storage and there is parking on the road in front of the house. This property is also offered with no chain.

Located on the borders of Surbiton, the area has access to a good local bus service and excellent road links. Surbiton has a good selection of local shops, bars and restaurants and a mainline station with services into London Waterloo in less than 20 minutes.

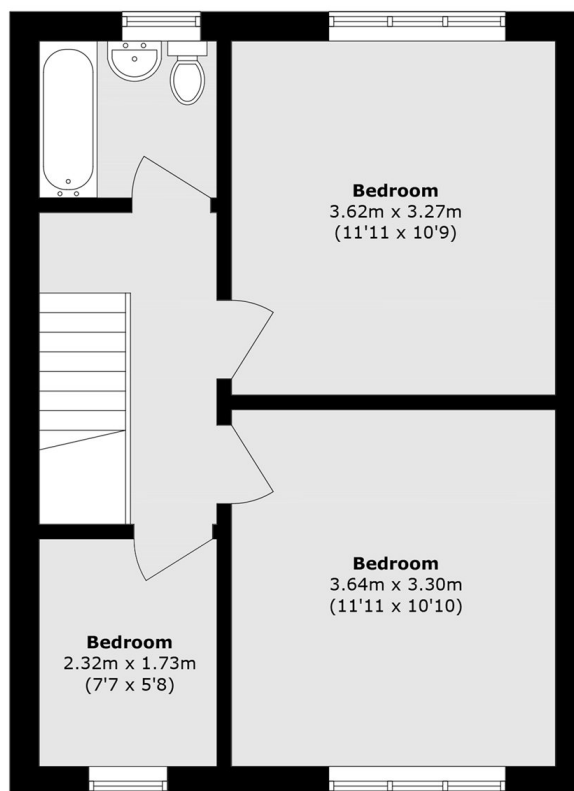
### Features

- Detached House
- Two Reception Rooms
- Three Bedrooms
- Garage
- Potential To Extend (STPP)
- No Chain

# Tolworth Road, Surbiton, KT6



**Ground Floor**



**First Floor**

Total area (approx.): 83.2 sq. m (895.5 sq. ft)