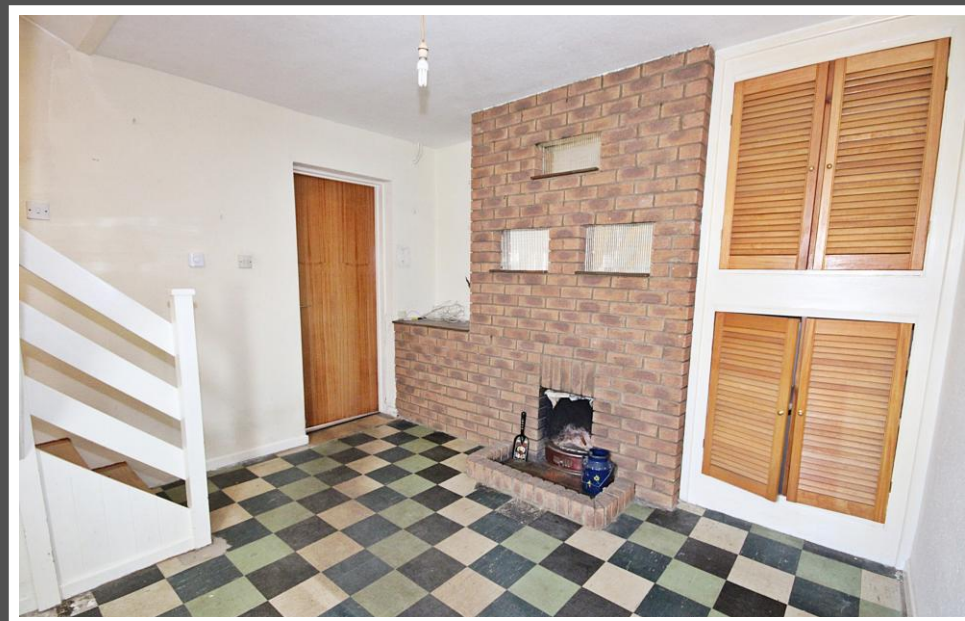


Love Homes



East View, Wits End, Eversholt, Bedfordshire, MK17 9DZ

The property offers two versatile reception rooms, ideal for relaxing and dining, leading into the kitchen and ground floor bathroom. Upstairs, there are three bedrooms. The layout feels light and airy, with open views to the front and beyond the rear garden, enhancing the sense of space and tranquillity. The home offers excellent potential to update to personal taste. Outside, a substantial south-east facing garden overlooks picturesque fields, creating a beautiful setting for outdoor enjoyment. To the rear, a double garage provides excellent storage or workshop space, along with a driveway for additional parking.



This property is presented by Patrick Graystone - a Love Homes property expert with over 25 years' experience.

Find out more about this property by scanning the QR code.



5.m



3



2



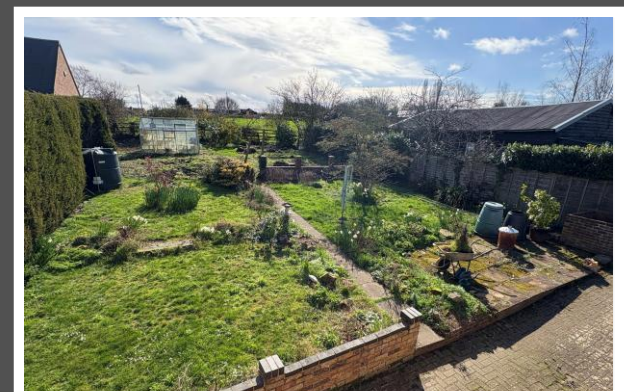
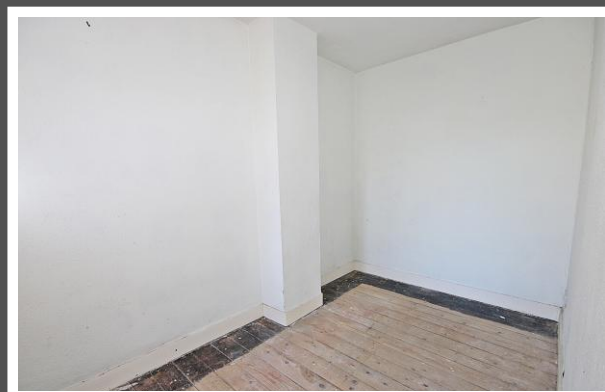
1

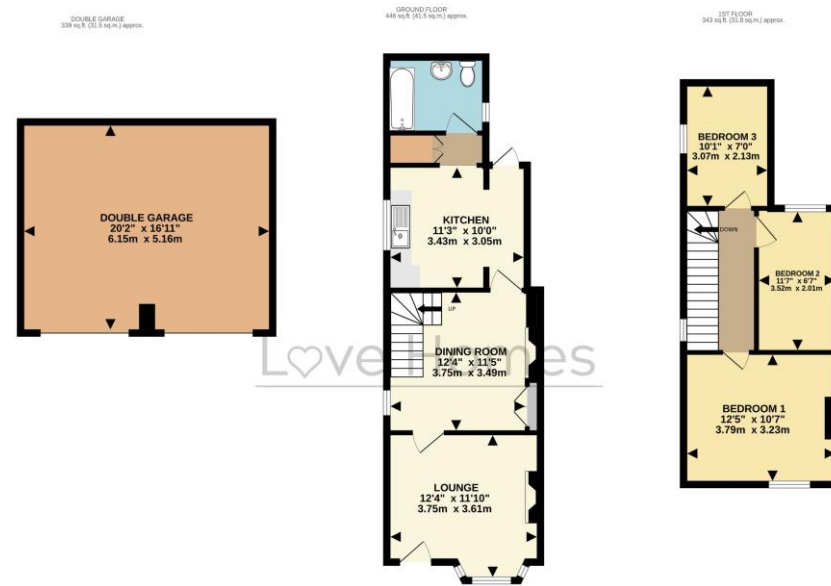
Tenure: Freehold

Council Tax: D



Eversholt is a picturesque Bedfordshire village set within the scenic Greensand Ridge, known for its rural charm and strong community feel. It features a mix of historic cottages and elegant homes, along with a village green, church, and popular pub. Surrounded by countryside, it offers excellent walking and outdoor leisure opportunities. Despite its peaceful setting, Eversholt is conveniently located near Woburn and Milton Keynes, with easy access to the M1 and nearby rail links to London. Well-regarded local schools add to its appeal, making it a desirable location for families, commuters, and those seeking a balance of countryside living and modern convenience.





TOTAL FLOOR AREA: 1128 sq.ft. (104.8 sq.m.) approx.
Drawn by Love Homes for illustrative purposes only. Measurements and areas shown are approximate. Made with Metropix ©2025

Score	Energy rating	Current	Potential
92+	A		
81-91	B		
69-80	C		71 C
55-68	D		
39-54	E		
21-38	F	36 F	
1-20	G		



These particulars are set out as a general outline in accordance with the Property Misdescriptions Act (1991) only for the guidance of intending purchasers or lessees, and do not constitute any part of an offer or contract. Details are given without any responsibility, and any intending purchasers, lessees or third parties should not rely on them as statements or representations of fact but must satisfy themselves by inspection or otherwise as to the correctness of each of them. We have not carried out a structural survey and the services, appliances and specific fittings have not been tested. All photographs, measurements, floor plans and distances referred to are given as a guide only and should not be relied upon for the purchase of carpets or any other fixtures or fittings. Gardens, roof terraces, balconies and communal gardens as well as tenure and lease details cannot have their accuracy guaranteed for intending purchasers. Lease details, service ground rent (where applicable) are given as a guide only and should be checked and confirmed by your solicitor prior to exchange of contracts. No person in the employment of Love Homes has any authority to make any representation or warranty whatever in relation to this property. Purchase prices, rents or other prices quoted are correct at the date of publication and, unless otherwise stated, are exclusive of VAT. We retain the copyright in all advertising material used to market this Property. All information is as advised by the seller and subject to change. Council tax bands can be subject to change by the local council.

5 The Russell Centre, Coniston Road, Flitwick, MK45 1QY
 Tel: 01525 713111

Email: flitwick@lovehomes.uk

www.lovehomes.uk



Love Homes