

Farrier Close, TW16

£465,000

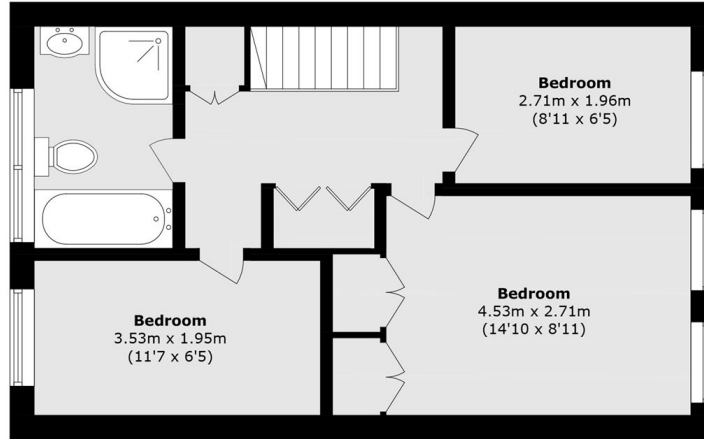
A three bedroom mid terrace house located in a quiet cul de sac with a private rear garden. This charming property is perfect as a first family home or for a buyer looking to downsize. There is also the added bonus of a downstairs W.C, and a children's play area within the close.

Farrier Close is a wonderful location, this peaceful cul de sac is off Anvil Road and Green Street. Sunbury station which provides a direct service into London Waterloo is approximately 1 mile away. With Sunbury Park and the River Thames also close by.

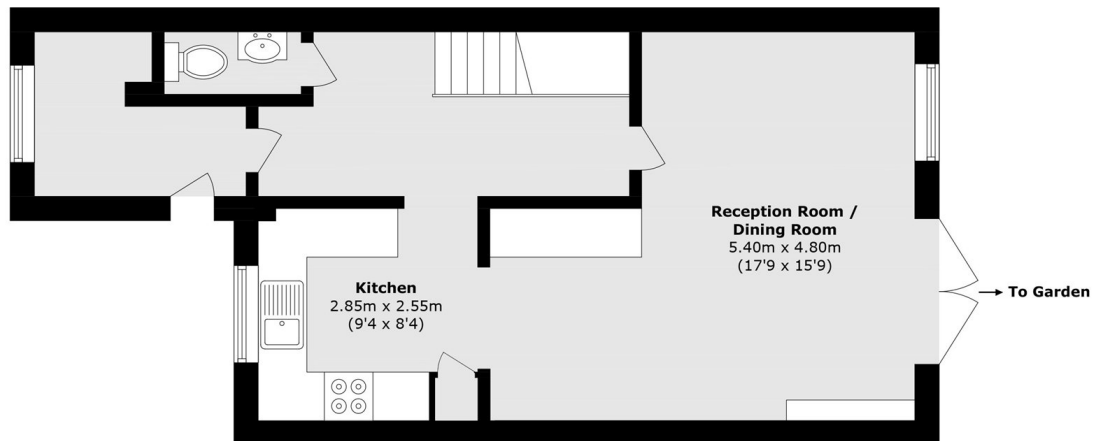
Features

- Freehold
- Three Bedrooms
- Open Plan Living
- Downstairs W.C.
- Private Garden
- Cul De Sac

Farrier Close, Sunbury-On-Thames, TW16



First Floor



Ground Floor

Total area (approx.): 83.3 sq. m (896.6 sq. ft)