



turners



Torrs Park

Ilfracombe, EX34 8AZ

Price Guide £150,000



Chartwood, Torrs Park

Ilfracombe, EX34 8AZ

Price Guide £150,000

- Well-presented two bedroom apartment
- Communal gardens
- Chain-free sale
- Direct access to the South West Coast Path
- Amazing views across Ilfracombe
- Short walk to Ilfracombe Harbour
- Off-road parking
- Close proximity to local amenities

Property Description

Situated within an attractive and characterful Victorian residence in the highly desirable Torrs Park area of Ilfracombe, this spacious two-bedroom apartment enjoys an elevated position that affords stunning far-reaching views across the town and surrounding landscape. Combining period charm with practical modern living, the property benefits from its own private entrance, off-road parking and is offered to the market with the added advantage of no onward chain.

Upon entering the property, you are welcomed into a well-proportioned and thoughtfully arranged home. The spacious open-plan lounge and dining area forms the heart of the property, creating an inviting space for both relaxing and entertaining. Large windows flood the room with natural light while framing impressive views across Ilfracombe, enhancing the sense of space and openness throughout.

The galley-style kitchen is conveniently positioned adjacent to the living area and offers ample storage and workspace, making it both practical and functional for everyday living. The accommodation further comprises two generous double bedrooms, both enjoying elevated views over the town. The principal bedroom benefits from a delightful distant sea view, providing a tranquil setting to wake up to each morning, whilst the second bedroom offers flexibility for use as a guest room, home office or additional family accommodation.

Completing the internal accommodation is a well-appointed three-piece bathroom suite, comprising a bath with shower over, wash hand basin and low-level WC.

Externally, the property continues to impress with access to a substantial communal rear garden. This attractive outdoor space provides residents with an ideal area to relax, enjoy the surrounding scenery or dry laundry during the warmer months. A particularly notable feature is the direct access from the gardens onto the renowned South West Coast Path and the picturesque Torrs, offering an abundance of scenic coastal walks right on the doorstep. The property also benefits from off-road parking, a valuable asset within this sought-after coastal location.

Torrs Park remains one of Ilfracombe's most desirable residential areas, prized for its leafy surroundings, Victorian architecture and proximity to both the coastline and town centre. The apartment is conveniently located within walking distance of a range of local amenities, schools, transport links, independent shops, cafés and restaurants, whilst Ilfracombe's bustling harbour and seafront attractions are also close by.

Whether you are a first-time buyer seeking a spacious home, an investor looking for a strong rental opportunity, or someone searching for a coastal retreat, this charming apartment presents a fantastic opportunity to acquire a character-filled property in one of North Devon's most sought-after locations.

Location

Ilfracombe town offers a variety of independent shops, art galleries, restaurants and bars. The picturesque seafront and harbour area is home to artist Damien Hirst's 'Verity' statue at the harbour entrance. In addition is the exciting new water sports centre and café making the harbour a hive of activity.

North Devon has a wealth of simply stunning golden sand beaches and has long been a mecca for British surfers. The area has recently been declared a 'world surfing reserve', one of just 12 places on the planet along with Australia's Golden Coast and Malibu in California.

Agent Notes

- The length of the lease is 999 years with 985 year remaining
- Holiday letting is not permitted
- Current service charge is £143.00pcm
- Pets are allowed

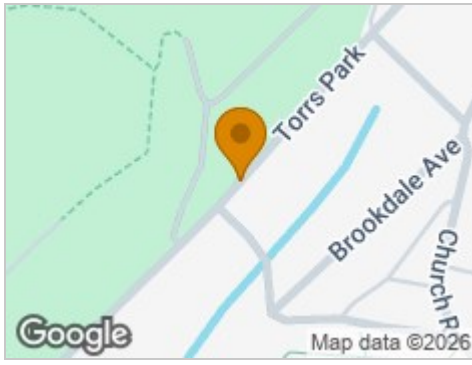
Directions

From our office head in a South Westerly direction along the high street. At the traffic lights turn right onto Northfield Road. Continue straight along this road, once past the traffic lights take the next left onto Torrs Park. follow this road until you reach Chartwood which will be clearly sign posted on your right hand side.

What3words: outlined.undertone.burst



Road Map



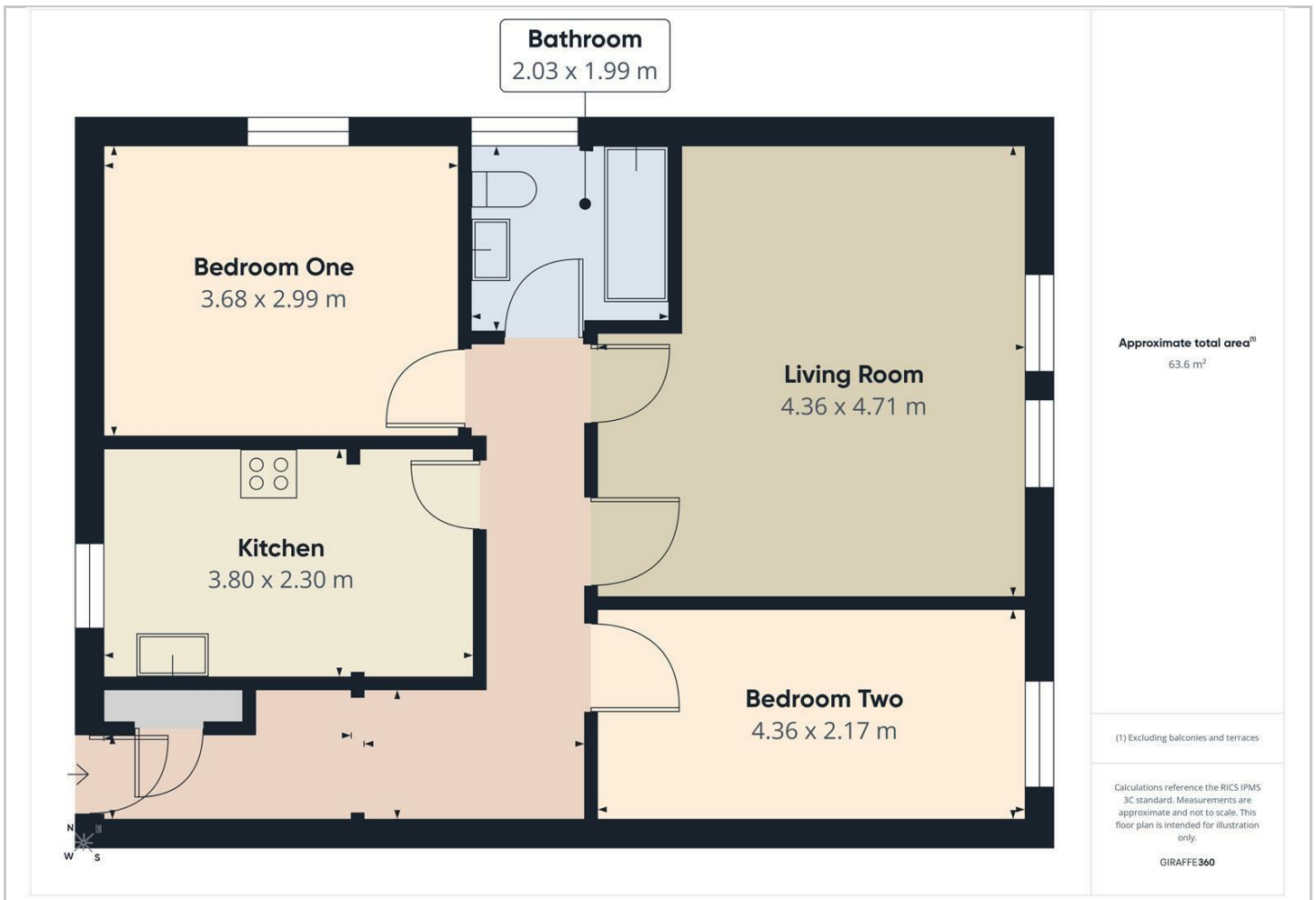
Hybrid Map



Terrain Map



Floor Plan



Viewing

Please contact our Turners Property Centre Office on 01271 866421 if you wish to arrange a viewing appointment for this property or require further information.

These particulars, whilst believed to be accurate are set out as a general outline only for guidance and do not constitute any part of an offer or contract. Intending purchasers should not rely on them as statements of representation of fact, but must satisfy themselves by inspection or otherwise as to their accuracy. No person in this firm's employment has the authority to make or give any representation or warranty in respect of the property.

135 High Street, Ilfracombe, Devon, EX34 9EZ
 Tel: 01271 866421
 Email: sales@turnerspropertycentre.co.uk
<https://www.turnerspropertycentre.co.uk>

Energy Efficiency Graph

