



Guide Price
£535,000

Freehold

3x  1x  1x 

**Bristow Road,
Beddington, Surrey, CR0**

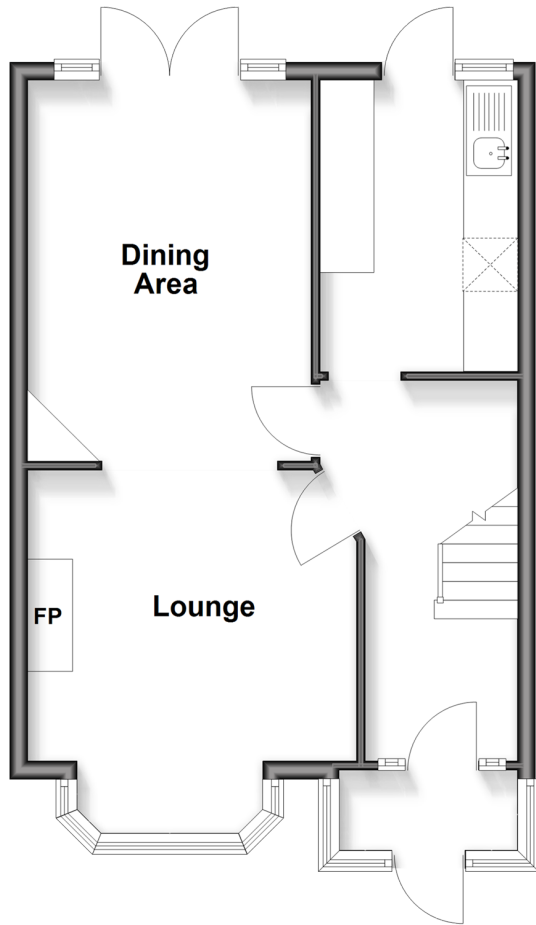
OVER 60?

Secure this property
for up to **59% less!**

cubitt & west
Helping you move forwards

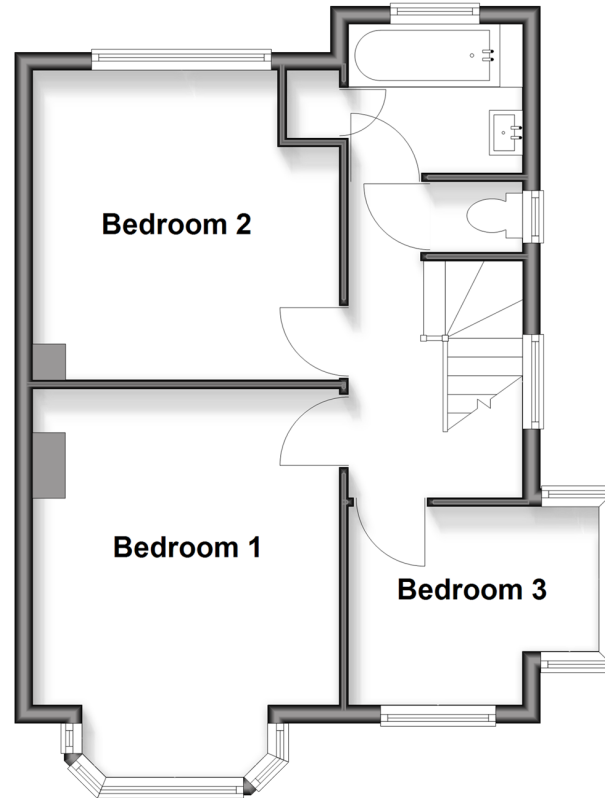
Ground Floor

Approx. 44.9 sq. metres (483.2 sq. feet)



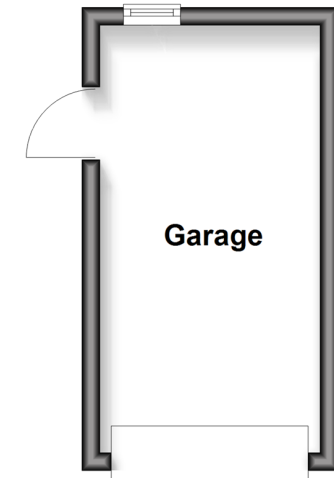
First Floor

Approx. 42.5 sq. metres (457.3 sq. feet)



Outbuilding

Approx. 11.6 sq. metres (125.2 sq. feet)



Accommodation

GROUND FLOOR

Entrance Porch

Entrance Hall

Lounge/Dining Area: 29'1 x 11'8 (8.87m x 3.56m)

Kitchen: 10'5 x 7'0 (3.18m x 2.14m)

FIRST FLOOR

Bedroom 1: 14'5 x 11'8 (4.40m x 3.56m)

Bedroom 2: 11'8 x 11'0 (3.56m x 3.36m)

Bedroom 3: 9'0 x 8'0 (2.75m x 2.44m)

Bathroom

Separate Toilet

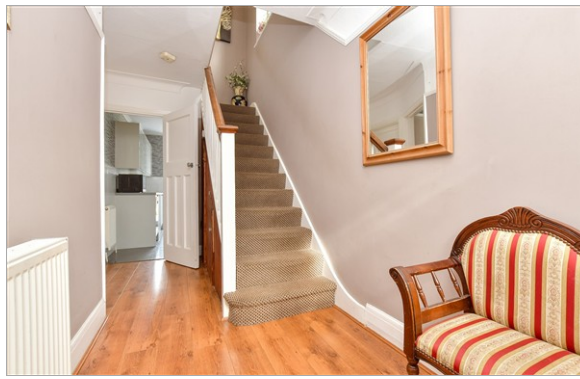
OUTBUILDING

Garage

OUTSIDE

Front Garden

Rear Garden



Main features

- Fantastic chain-free home
- Situated in a popular cul-de-sac
- Garage and large rear garden
- Nicely presented
- Located in the London Borough of Sutton within the catchment area of high performing schools



Nearest Schools

Primary Schools: High View Primary 0.5 miles, Beddington Park Primary 0.8 miles, Amy Johnson Primary 0.8 miles

Secondary Schools: Link Secondary School 0.4 miles, Sherwood Park School 0.7 miles, Wilson's School 0.8 miles



Transport Information

Train Stations: Waddon 0.8 miles, Wallington 0.9 miles, Hackbridge 1.3 miles



Address

Bristow Road, Beddington, Surrey, CR0



Directions

For directions to this property please contact us.



cubitt&west
Helping you move forwards

Call Wallington Branch 020 8647 0011 ■ cubittandwest.co.uk



■ Legal advice should be taken to verify fixtures/fittings, planning, alterations and/or lease details ■ Appliances & services are untested, dimensions are approximate and floor plans are not to scale
■ Through a Homewise Home For Life Plan people aged 60+ can secure this property for up to 59% less, by purchasing a Lifetime Lease

| | | |
|------------|----------|------------|
| EPC RATING | CURRENT: | POTENTIAL: |
| | D(67) | B(84) |

22117952/20260302/LJ/NL