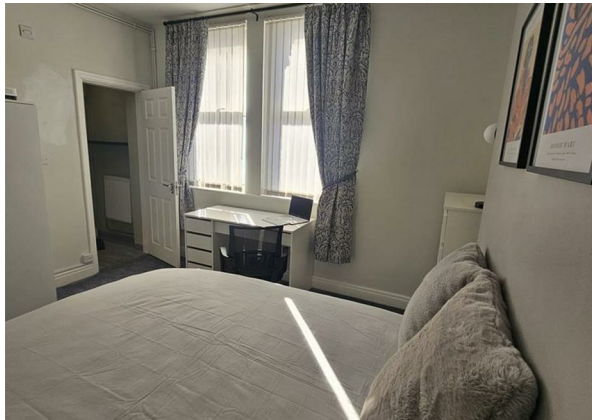


Hannan Road,, Liverpool, L6 6DB  
£650 Per Month  
Council Tax Band: A



STUNNING NEW ENSUITE ROOM – NEWLY REFURBISHED AND FULLY STAGED – ALL BILLS INCLUDED

**UPGRADED PROFESSIONAL LIVING IN L6**

Experience a fresh start in this beautifully updated, private ensuite room on Hannan Road. Perfectly suited for a single occupant who values privacy, comfort, and a high-standard finish in a well-maintained shared home.

**Freshly Refurbished and Staged**

This specific room has been recently upgraded to a modern, high-spec standard.

**Brand-New Staged Furniture:** The room comes fully equipped with stylish, unused furniture, offering a boutique hotel feel from the moment you move in.

**Private Ensuite:** Benefit from the convenience of your own private bathroom.

**Final Finishing Touches:** The room is currently undergoing its final stage of refurbishment, with the ensuite bathroom being refreshed to match the high standard of the bedroom. The AI-generated visuals demonstrate the final intended layout and quality.

**The Property and Shared Spaces**

While your room offers total privacy, the house provides a clean and respectful environment:

**Fully Equipped Kitchen:** Large shared space with modern appliances.

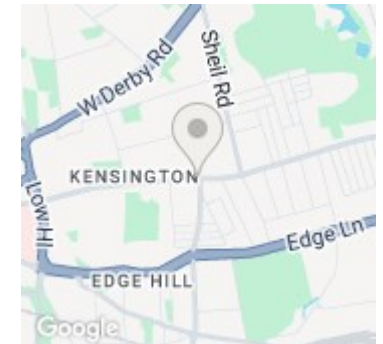
**Communal Living:** A comfortable area for relaxing.

**Quiet Household:** Professionally managed to ensure a peaceful living environment for all tenants.

All-Inclusive Simplicity



**Open House Liverpool**



Energy Efficiency Rating		
	Current	Potential
<i>Very energy efficient - lower running costs</i>		
(92 plus) <b>A</b>	<b>94</b>	
(81-91) <b>B</b>		
(69-80) <b>C</b>		
(55-68) <b>D</b>		
(39-54) <b>E</b>		
(21-38) <b>F</b>		
(1-20) <b>G</b>		
<i>Not energy efficient - higher running costs</i>		
<b>England &amp; Wales</b>	EU Directive 2002/91/EC	