



Connells

John Barker Place
Hitchin



Property Description

A large upper floor one bedroom flat offered for sale with no onward chain.

This flat is situated in Westmill, Hitchin, conveniently located near to local amenities. This property would suit a first time perfectly and would also yield over £1000PCM as an investment.

Entrance Hall

Door to front, storage cupboard and radiator.

Lounge

Double glazed window to rear aspect, TV and telephone points.

Kitchen

Fitted kitchen with a double glazed window to front aspect, a range of wall and base units, space for fridge/freezer, plumbing for washing machine and radiator.

Bedroom

Double glazed window to rear aspect, built-in cupboard and radiator.

Bathroom

Double glazed window to front aspect, wash hand basin, bath and WC.

Outside

Communal Grounds

Lawned communal grounds.

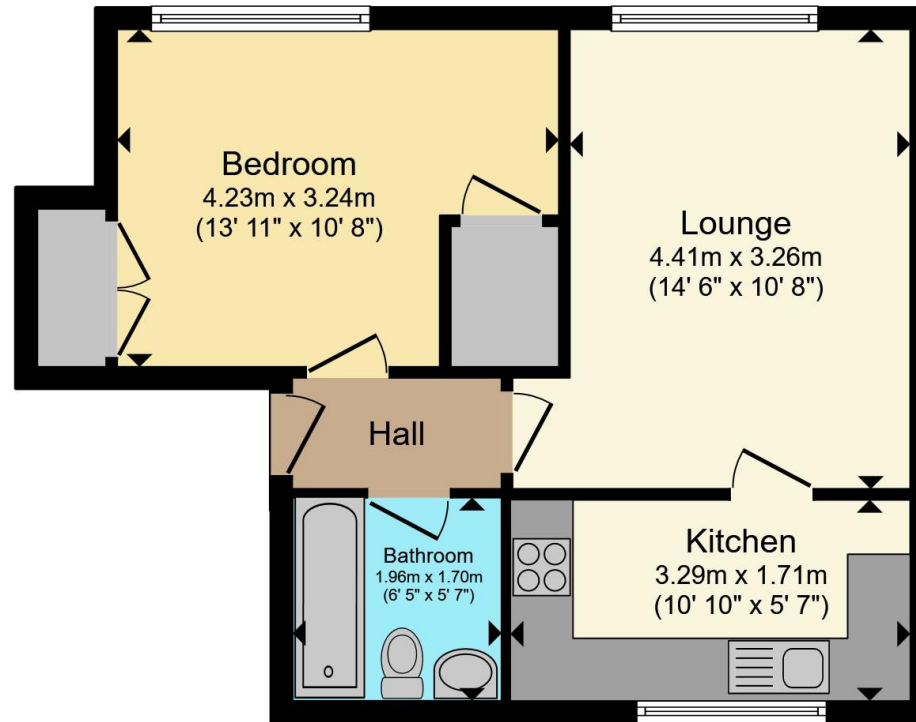
Parking

On-street parking on a first-come first-serve basis.









Total floor area 44.7 m² (481 sq.ft.) approx

This floor plan is for illustrative purposes only. It is not drawn to scale. Any measurements, floor areas (including any total floor area), openings and orientation are approximate. No details are guaranteed, they cannot be relied upon for any purpose and they do not form part of any agreement. No liability is taken for any error, omission or misstatement. A party must rely upon its own inspection(s). Powered by www.propertybox.io



To view this property please contact Connells on

T 01462 437 666
E hitchin@connells.co.uk

14 High Street
 HITCHIN SG5 1AT

EPC Rating: D Council Tax
 Band: A

Service Charge: 650.00 Ground Rent:
 10.00

Tenure: Leasehold

view this property online connells.co.uk/Property/HIT308517

This is a Leasehold property with details as follows; Term of Lease 125 years from 13 Apr 2004. Should you require further information please contact the branch. Please Note additional fees could be incurred for items such as



1. MONEY LAUNDERING REGULATIONS Intending purchasers will be asked to produce identification documentation at a later stage and we would ask for your co-operation in order that there will be no delay in agreeing the sale. 2. These particulars do not constitute part or all of an offer or contract. 3. The measurements indicated are supplied for guidance only and as such must be considered incorrect. Potential buyers are advised to recheck measurements before committing to any expense. 4. We have not tested any apparatus, equipment, fixtures, fittings or services and it is in the buyers interest to check the working condition of any appliances.

Connells Residential is registered in England and Wales under company number 1489613, Registered Office is Cumbria House, 16-20 Hockliffe Street, Leighton Buzzard, Bedfordshire, LU7 1GN. VAT Registration Number is 500 2481 05.

See all our properties at www.connells.co.uk | www.rightmove.co.uk | www.zoopla.co.uk

Property Ref: HIT308517 - 0003