



Twisden Road, NW5

£1,500,000

Dexters



Twisden Road, NW5

A beautiful four storey end of terrace Victorian house on one of Dartmouth Park's most desirable streets, offering over 2,000 sq ft of living space, a private west facing garden and a wealth of period charm.

Fully renovated and interior design by Howe London, the house combines period character with peace of mind, benefiting from a new roof, windows, solar panels, structural improvements and upgraded electrics and plumbing. The stock brick facade, arched porch and bay windows speak to its Victorian heritage, while inside original floorboards run throughout, ceilings are dressed with ornate cornicing and ceiling roses, and period fireplaces feature room after room.

The ground floor is has a stunning double reception room with full height doors opening directly onto the garden. The kitchen and utility room complete this level. Upstairs, generous light filled accommodation spans the first, second and third floors. The rooms are well proportioned, several with bay windows framing the leafy treetops, and offer real flexibility for bedrooms, studies or a playroom. The top floor provides an impressive room of nearly 20 ft.

Twisden Road sits in the heart of Dartmouth Park, moments from Hampstead Heath, with the shops and cafés of Dartmouth Park and Kentish Town close by.

Features

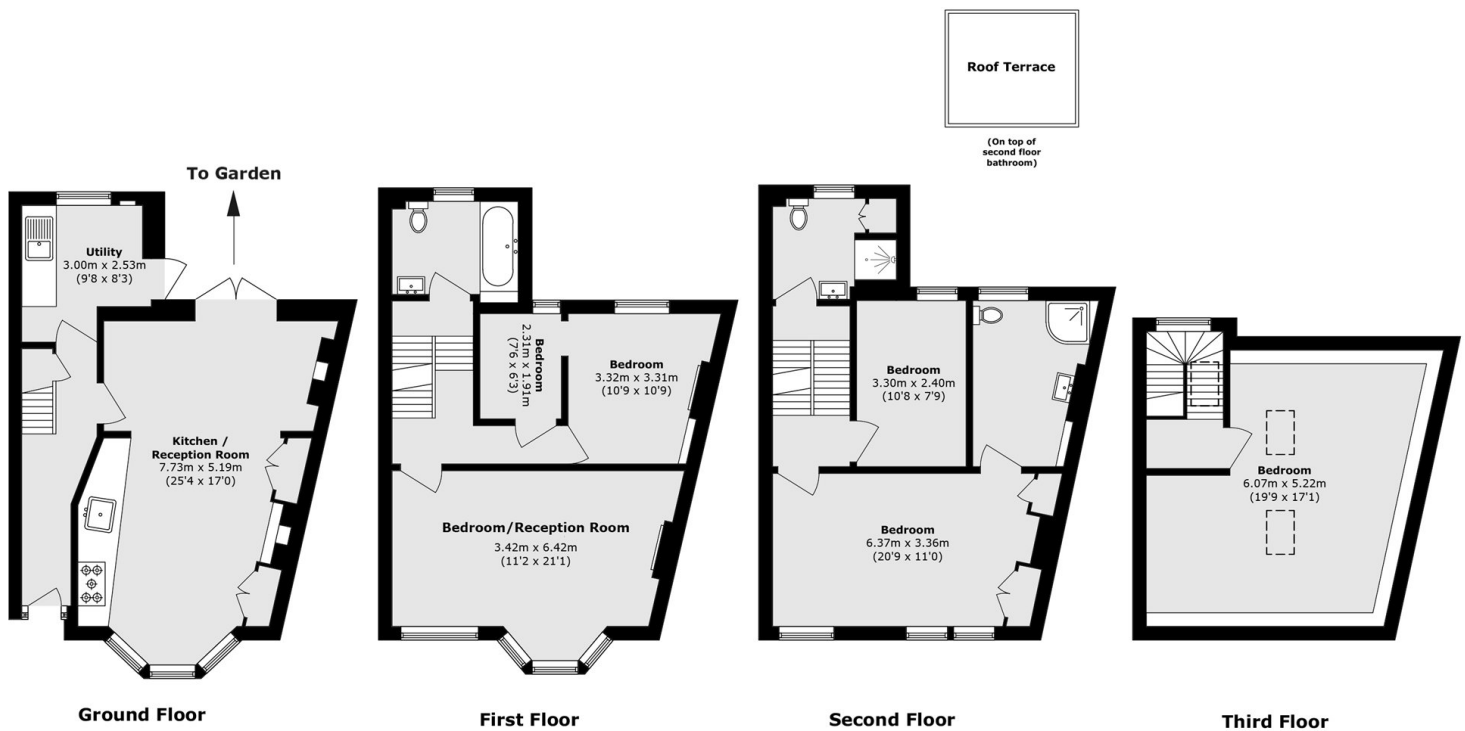
- Five Bedrooms
- Conservation Area
- Interior Designed
- Over 2,000 SQFT
- Garden Side Entrance
- Three Bathrooms







Twisden Road, London, NW5



Total area (approx.): 191.1 sq. m (2056.9 sq. ft)
Roof Terrace area (approx.): 6.8 sq. m (73.2 sq. ft)