

**LIVERMORES**





Tenure  
 Our vendor has informed us that this is a Leasehold property.  
 Lease Term Remaining: 250 Years from 1 January 2022  
 Service Charge: £1,535.22 per year  
 Ground Rent: £0 per year

**Additional Information**

Parking: One allocated parking space with a charging port for electric cars  
 Heating: Gas boiler  
 Electricity Supply: Mains  
 Water Supply: Mains  
 Drainage: Mains  
 Council: Bexley  
 Broadband: Standard and Ultrafast broadband are available. Actual service availability at a property may be different. Visit the Ofcom website for further information  
 Mobile Signal/Coverage: You are likely to have good coverage from most networks. Visit the Ofcom website for further information  
 Internal Measurements: Please see the floor plan



**Agents Note**

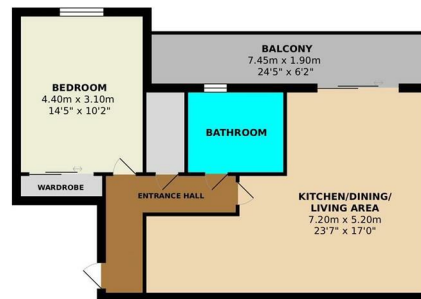
Under the Estate Agents Act of 1979 we are declaring a personal interest in the sale of this property.

**Disclaimer**

These particulars should be regarded as a general guide only and therefore should not be relied upon as statements of fact. They do not form part of any contract or offer. All photographs, measurements and distances referred to are given as a guide only and therefore should not be relied upon for any purpose.

If a floorplan is shown, this will not be to scale, and the accuracy is not guaranteed. Main services and appliances have not been tested by the agents and no warranty is given by them as to working order or condition.

Reference to tenure, leases, service charge, ground rent, estate management charges, fixtures, fittings, condition, extensions, planning permission, building consents/regulations, building works, conversions, or any other statement contained in these particulars should not be relied upon and must be verified by a legal representative or solicitor before any contract is entered into. If clarification or further information is required, please contact us before making an appointment to view, especially if you are travelling some distance.



| Energy Efficiency Rating                           |                         |           |
|--|-------------------------|-----------|
|  | Current                 | Potential |
| <i>Very energy efficient - lower running costs</i> |                         |           |
| (92 plus) <b>A</b>                                 |                         |           |
| (81-91) <b>B</b>                                   | <b>84</b>               | <b>84</b> |
| (69-80) <b>C</b>                                   |                         |           |
| (55-68) <b>D</b>                                   |                         |           |
| (39-54) <b>E</b>                                   |                         |           |
| (21-38) <b>F</b>                                   |                         |           |
| (1-20) <b>G</b>                                    |                         |           |
| <i>Not energy efficient - higher running costs</i> |                         |           |
| <b>England &amp; Wales</b>                         | EU Directive 2002/91/EC |           |

Livermores The Estate Agents  
 126 Crayford Road, Crayford, Kent, DA1 4ES  
 01322 550777  
 crayford@livermores.co.uk

Agents Note: Whilst every care has been taken to prepare these particulars, they are for guidance purposes only. All measurements are approximate are for general guidance purposes only and whilst every care has been taken to ensure their accuracy, they should not be relied upon and potential buyers/tenants are advised to recheck the measurements.