



WICKHAM ROAD, SE4

£450,000

Two bedroom apartment
Two bathrooms
Huge - circa 850 sq ft
Communal garden
Brockley conversation area
Energy rating: C

@marshandparsons
marshandparsons.co.uk

MARSH &
PARSONS



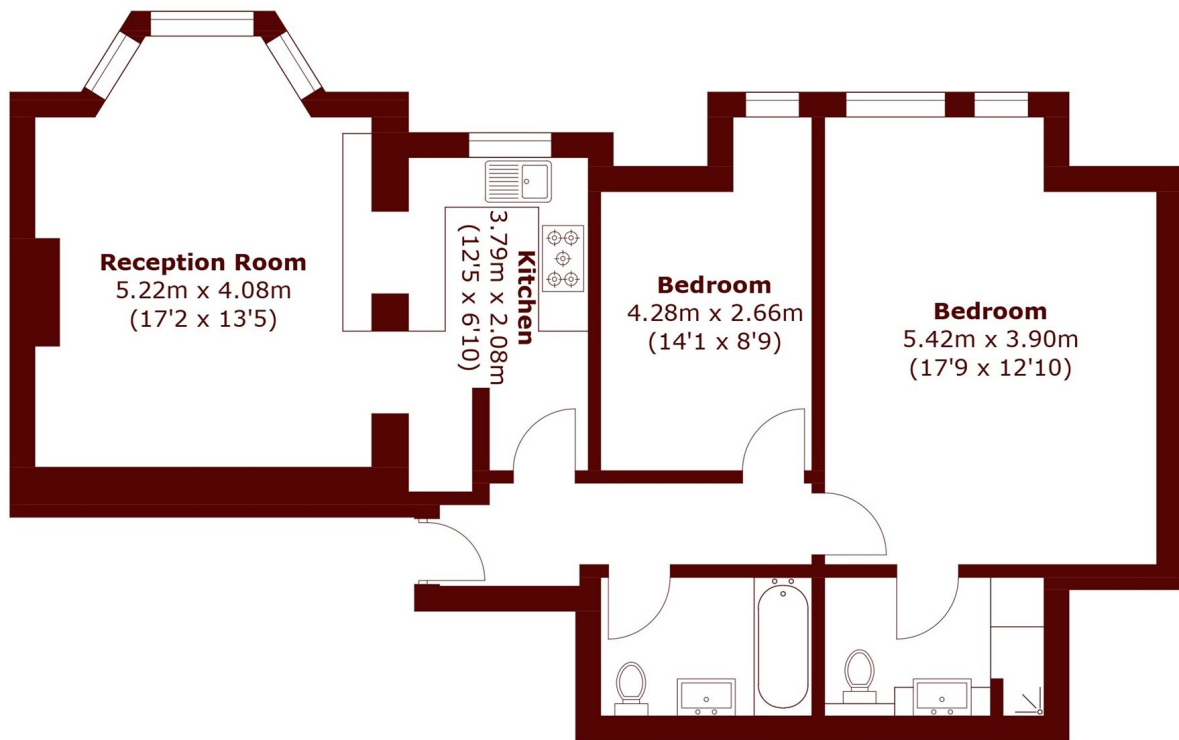
ABOUT THE PROPERTY

Set in this glorious double fronted Victorian villa, a great size two double bedroom, two bathroom apartment with communal garden to rear.

The home is presented in 'just move in' condition and features a well-planned kitchen and two quality bathrooms. Located on Wickham Road, one of the popular wide tree-lined roads in the Brockley Conservation Area, and within a few hundred metres of Zone 2 Brockley overground.



STEP INSIDE WICKHAM ROAD



Lower Ground Floor

Total area (approx.): 76.3 sq. m (821.3 sq. ft)

Brockley
020 8629 8164

Energy Rating: C We aim to make our particulars both accurate and reliable. However, they are not guaranteed; nor do they form part of an offer or contract. If you require clarification on any points then please contact us, especially if you're traveling some distance to view. Please note that appliances and heating systems have not been tested and therefore no warranties can be given as to their good working order

**MARSH &
PARSONS**