



Jewel Square, E1W

£2,000 Per month

 1  1  1  D

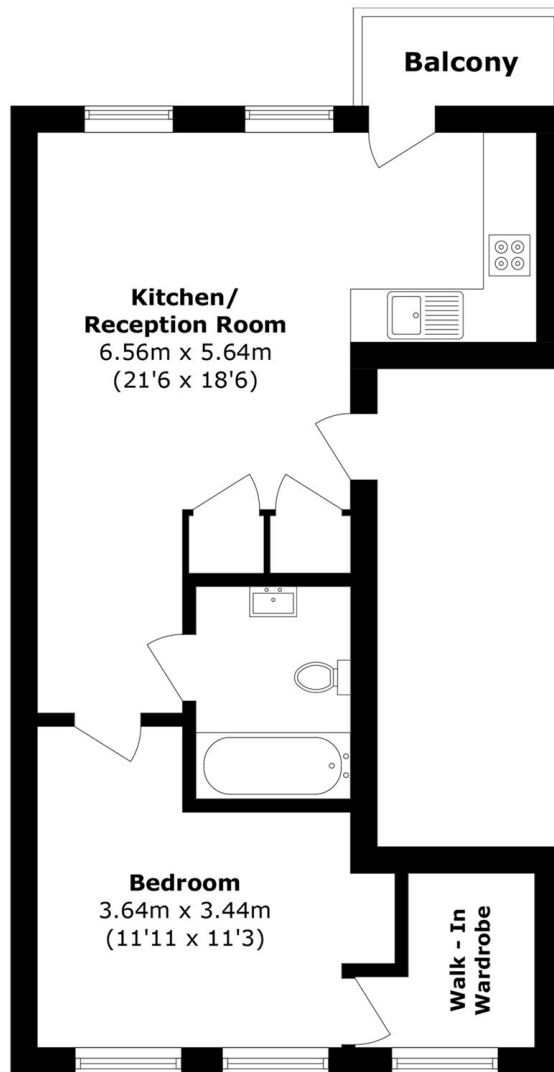
- Modern One Bedroom
- Fully Fitted Kitchen
- Under Floor Heating
- Concierge & Bike Storage
- Parking Available
- Wapping



A well presented one bedroom apartment in a new development on the top of Wapping Lane and near the Tobacco Dock. The apartment benefits from wooden floors, under floor heating and contemporary kitchen and bathroom. Set around a beautiful communal garden, the building also offers access to concierge service, bike storage, and parking is available at £25 per week.

Ideally located in Wapping and close to St Katharine's Docks with a wide selection of bars, restaurants and cafes nearby. Only a short walk from Shadwell and Tower Hill Stations, DLR links, Wapping Overground Station, and buses on the street for an easy access to the City, London Bridge, Canary Wharf or Shoreditch.





Total Area (approx.): 45.6 sq. m (490.8 sq. ft)

Balcony area (approx.): 4.1 sq. m (44.1 sq. ft)

35A Wapping High Street,
London, E1W 1NR
020 7702 3456
ea2group.com