



## Balaclava Road

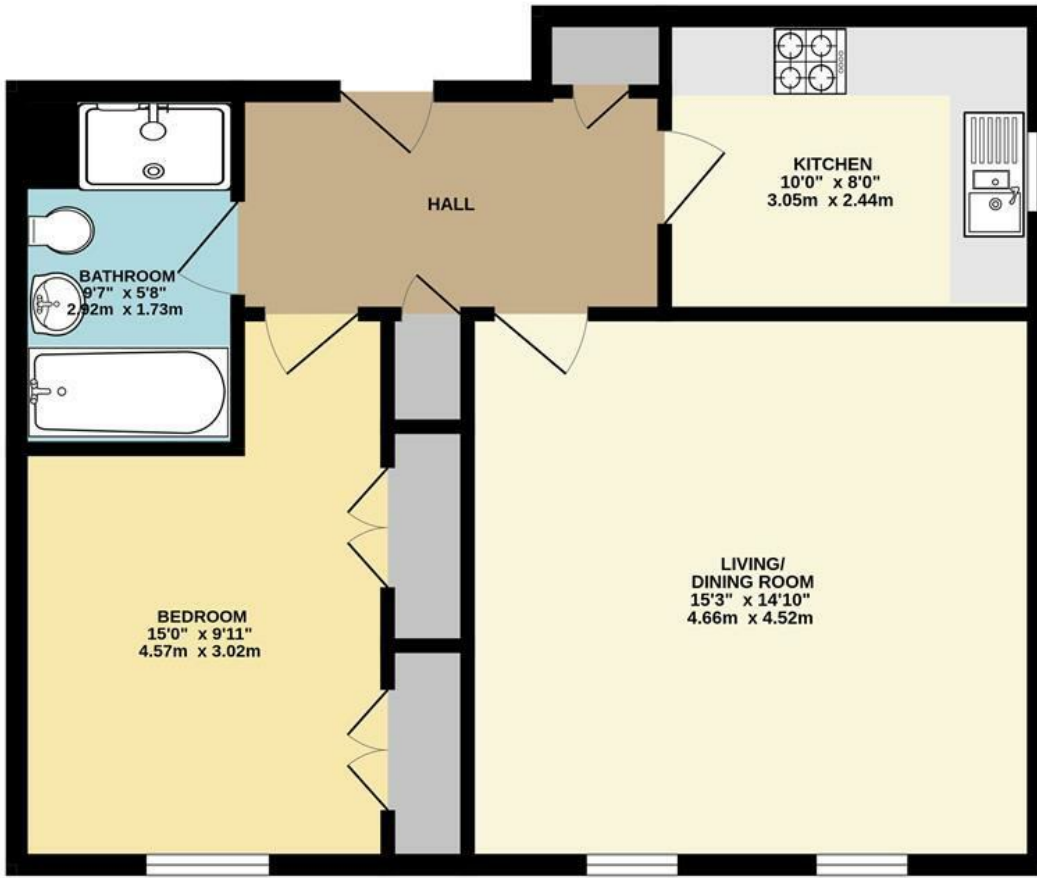
Surbiton, KT6 5RT

**Guide Price £350,000**

Enjoying a convenient location on the hugely popular St James Development is this very nicely presented, bright and spacious purpose built apartment. Located on the first floor the accommodation includes a generously proportioned reception room, double bedroom with fitted wardrobes, a well equipped kitchen and a four piece bathroom suite. Other benefits include secured underground parking and offered to market chain free.

- St James Development
- Double bedroom With Built in Wardrobes
- Bathroom with Separate Shower
- Close to Surbiton Station and Town Centre
- First Floor Purpose Built Flat
- Separate Kitchen
- Secure Underground Parking
- Chain Free

# Floor Plan



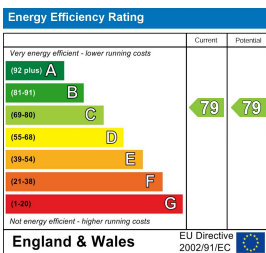
FIRST FLOOR FLAT

BALACLAVA ROAD, LONG DITTON

INTERNAL FLOOR AREA (APPROX.) 605 sq ft/ 56.2 sq m

Whilst every attempt has been made to ensure the accuracy of this floor plan, measurement of doors, windows, rooms and any other items are approximate and no responsibility is taken for any error, omission or mis-statement. Made with Metropix © 2025.

## Energy Efficiency Graph



These particulars, whilst believed to be accurate are set out as a general outline only for guidance and do not constitute any part of an offer or contract. Intending purchasers should not rely on them as statements of representation of fact, but must satisfy themselves by inspection or otherwise as to their accuracy. No person in this firm's employment has the authority to make or give any representation or warranty in respect of the property.