



Lancaster Terrace, W2

£519 Per week

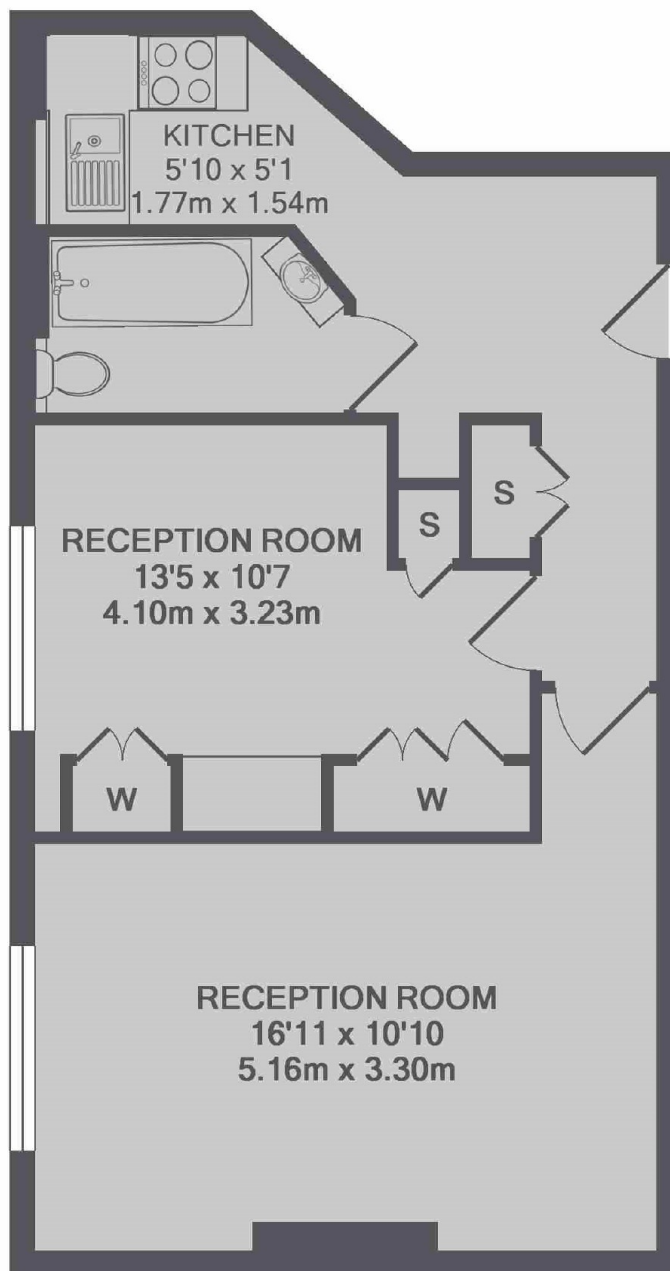
This spacious one double bedroom apartment has been recently refurbished to a high standard throughout. Fitted with contemporary furnishings and artwork, a modern bathroom and separate kitchen with space for dining.

Maitland Court is positioned opposite Hyde Park and moments from Lancaster Gate station for the central line. Paddington Station with London Underground and National Rail to Heathrow is close by.

Features

- One Bedroom
- Portered Block
- Newly Refurbished
- Separate Kitchen
- Modern Bathroom
- Hyde Park

Lancaster Terrace, London, W2



TOTAL APPROX. FLOOR AREA 515 SQ.FT. (47.9 SQ.M.)

Dexters

Hyde Park and Bayswater
4-5 Spring Street
London
W2 3RA
Lettings
020 7298 1560

Energy Rating: C. We aim to make our particulars both accurate and reliable. However they are not guaranteed; nor do they form part of an offer or contract. If you require clarification on any points then please contact us, especially if you're traveling some distance to view. Please note that appliances and heating systems have not been tested and therefore no warranties can be given as to their good working order.

 **RICS** | Regulated
Estate Agent
and Letting Agent

dexters.co.uk