



## Llwynbach Terrace, offers in excess of £160,000

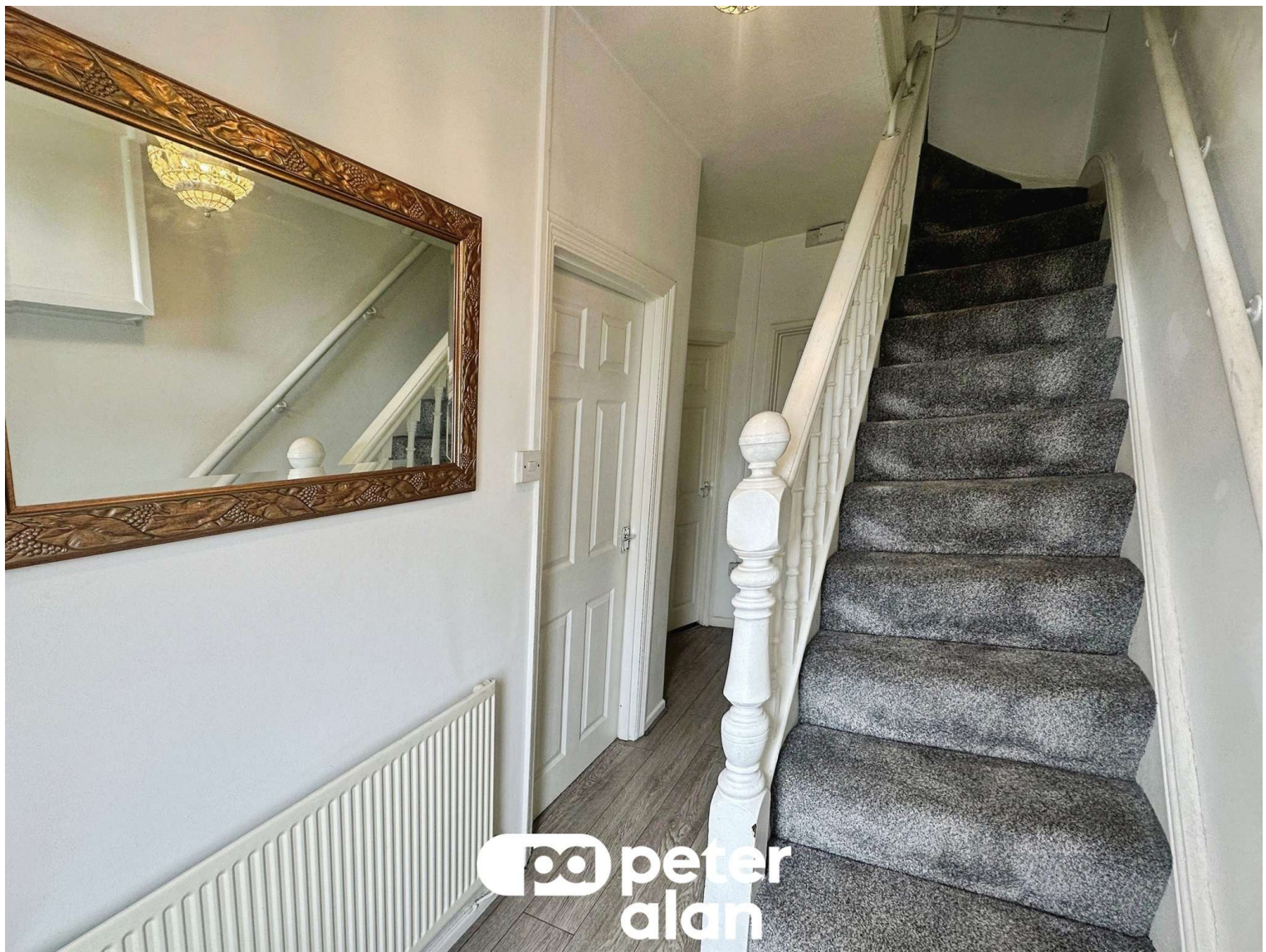
- Three Bedroom
- Terraced
- Great Location
- No Onward Chain
- Scenic Views
- EPC Rating: D



 3  1  1

 **peter  
alan**

01495 231199  
blackwood@peteralan.co.uk



## About the property

Set within a quiet and sought-after location, this well-presented three-bedroom mid-terrace home is situated on Llwynbach Terrace, Hollybush, Blackwood, enjoying scenic open views that provide a peaceful and attractive setting.

The property offers spacious and versatile accommodation, ideal for first-time buyers, families, or investors alike. On entering, you are welcomed into a bright and inviting living area, perfect for everyday living and entertaining. The kitchen provides ample storage and worktop space, offering great potential for modern family use.

To the first floor, the home features three well-proportioned bedrooms, each benefiting from pleasant outlooks, along with the added convenience of a recently fitted upstairs WC, enhancing practicality for family living.

Externally, the property boasts a recently landscaped front garden, creating an attractive approach to the home and a pleasant space to enjoy the surrounding views. The terrace position allows for a sense of community while still offering privacy and tranquillity.



## Accommodation

Entrance Hall

Cloakroom

Lounge

Kitchen

Bathroom

Bedroom 1

Bedroom 2

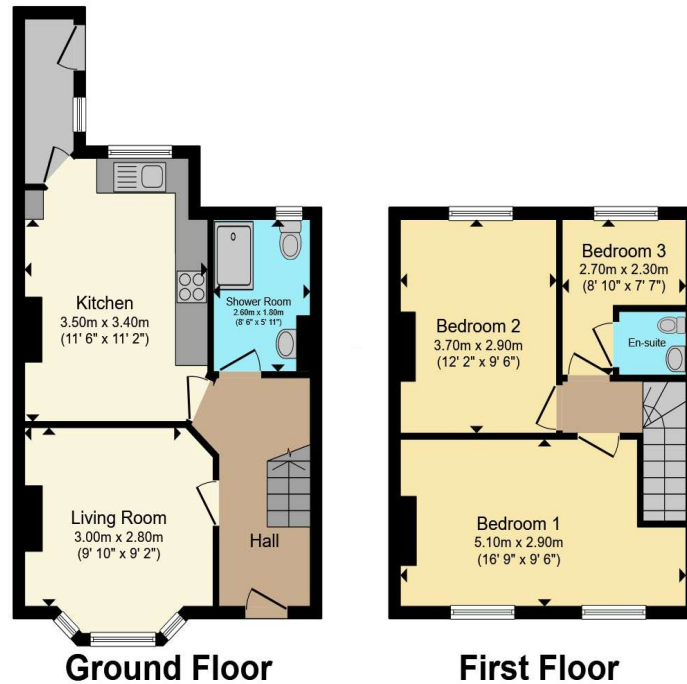
Bedroom 3

Wc

01495 231199

blackwood@peteralan.co.uk

## Floorplan



Total floor area 77.3 m<sup>2</sup> (832 sq.ft.) approx

This floor plan is for illustrative purposes only. It is not drawn to scale. Any measurements, floor areas (including any total floor area), openings and orientation are approximate. No details are guaranteed, they cannot be relied upon for any purpose and they do not form part of any agreement. No liability is taken for any error, omission or misstatement. A party must rely upon its own inspection(s). Powered by [www.propertybox.io](http://www.propertybox.io)



## Important Information

Note while we endeavour to make our sales details accurate and reliable, if there is any point which is of particular interest to you, please contact the office and we will be pleased to confirm the position for you. We have not personally tested any apparatus, equipment, fixtures, fittings or services and cannot verify they are in working order or fit for their purposes. Nothing in these particulars is intended to indicate that carpets or curtains, furnishings or fittings, electrical goods (whether wired or not). Gas fires or light fittings or any other fixtures not expressly included form part of the property offered for sale. This computer generated Floorplan, if applicable, is intended as a general guide to the layout and design of the property. It is not to scale and should not be relied upon for dimensions. Tenure: We cannot confirm the tenure of the property as we have not had access to the legal documents. The buyer is advised to obtain verification from their solicitor or surveyor.

Peter Alan Limited is registered in England and Wales under company number 2073153, Registered Office is Cumbria House, 16-20 Hockliffe Street, Leighton Buzzard, Bedfordshire, LU7 1GN. VAT Registration Number is 500 2481 05. For activities relating to regulated mortgages and non-investment insurance contracts, Peter Alan Limited is an appointed representative of Connells Limited which is authorised and regulated by the Financial Conduct Authority. Connells Limited's Financial Services Register number is 302221. Most buy-to-let

