



Lewis Cubitt Park, N1C

£5,500 Per calendar month

Dexters



Lewis Cubitt Park, N1C

The apartment features underfloor heating and integrated air conditioning throughout, while residents enjoy an array of premium on-site amenities including a cinema, residents' lounge and landscaped terrace. Further benefits include lift access and a 24-hour concierge service, ensuring comfort and convenience as well as a car parking space included in the rent.

Finished to an exceptional standard, this contemporary flat offers a sleek open-plan living and kitchen space, ideal for modern city living. Both bedrooms are generously sized, with the principal bedroom benefiting from a stylish en-suite, complemented by a second luxury bathroom.

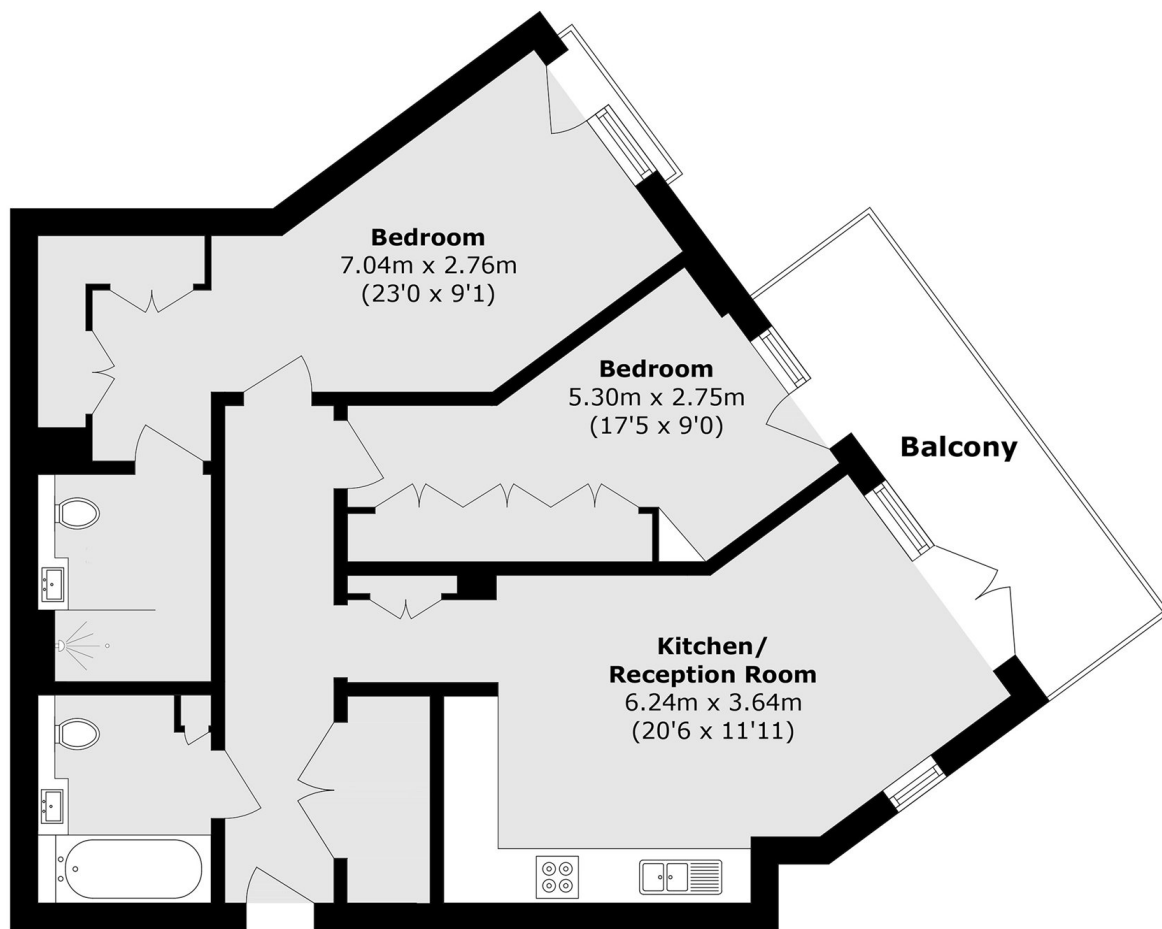
Ideally positioned overlooking Lewis Cubitt Park, the apartment is located in one of London's most dynamic and well-connected neighbourhoods. The area offers a vibrant mix of green spaces, acclaimed restaurants, cafés and cultural destinations, while excellent transport links provide easy access across the city and beyond.

Features

- Prime Location
- 24 Hr Concierge
- Car Parking Included
- Private Cinema
- Residents Lounge
- Two Bedrooms



Lewis Cubitt Park, London, N1C



Eighth Floor

Total area (approx.): 70.0 sq. m (753.5 sq. ft)

Balcony area (approx.): 9.1 sq. m (98.0 sq. ft)