



Park Street, W1K

£5,000 Per calendar month

A modern one bedroom apartment situated on the first floor (with lift) of this period building.

Park Street runs from Oxford street, parallel to Hyde Park which offers residents expansive green open spaces along with garden squares within walking distance too.

Set close to Oxford Street and Marble Arch stations, this property is located within easy reach of the shops and restaurants of Mayfair.

Features

- Spacious Double Bedroom
- First Floor
- Lift Access
- Furnished
- Private Balcony
- Excellent Location



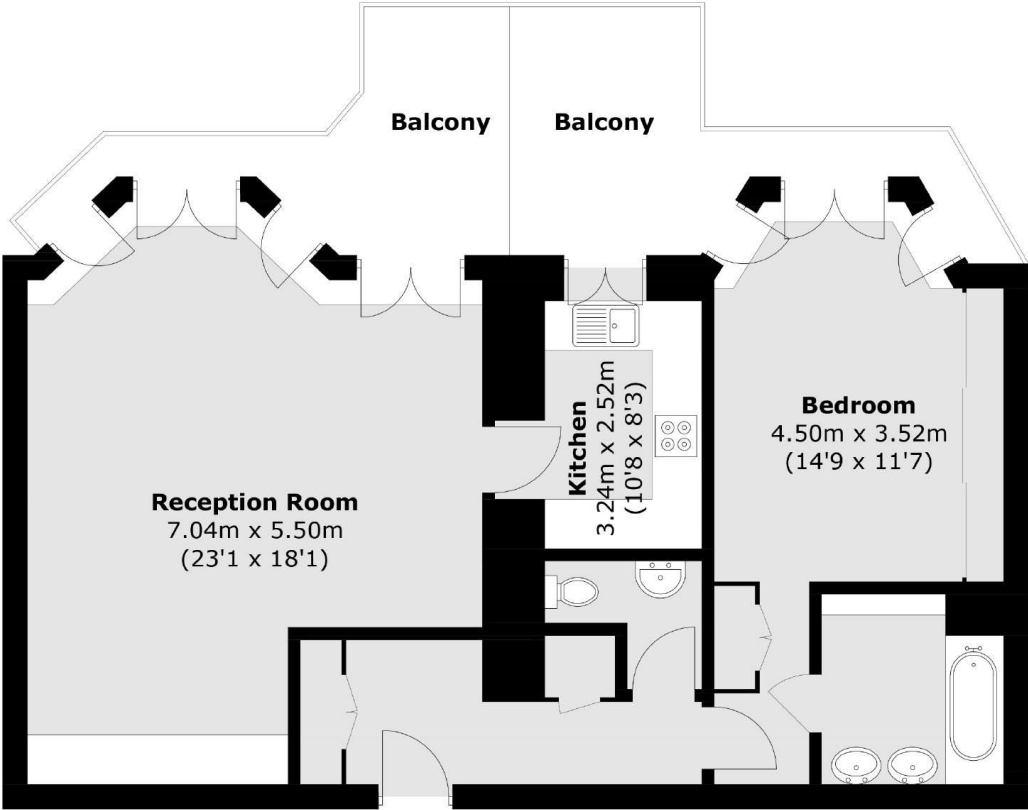
Park Street, W1K

This beautifully presented apartment features a spacious living room with access to a private balcony, alongside a sleek, modern kitchen. The generously sized bedroom offers ample built-in storage, its own private balcony, and a stylish en-suite bathroom, while a separate guest WC adds further convenience.

The property is enhanced by high ceilings throughout, creating a bright and airy feel, complemented by stunning floor-to-ceiling windows that flood the space with natural light.



Park Street,
London, W1K



Total area (approx.): 77.3 sq. m (832.0 sq. ft)
Balcony: 18.0 sq. m (193.7 sq. ft)



Wetherell
102 Mount Street
London
W1K 2TH
Lettings
020 7529 5588

Energy Rating: D. We aim to make our particulars both accurate and reliable. However they are not guaranteed; nor do they form part of an offer or contract. If you require clarification on any points then please contact us, especially if you're traveling some distance to view. Please note that appliances and heating systems have not been tested and therefore no warranties can be given as to their good working order.



dexters.co.uk