



Darwin Road
Stevenage | SG2 0DE

AGENT HYBRID

Offers Over £300,000



Situated on the popular Darwin Road in Stevenage, this well-presented mid-terrace home offers an excellent opportunity for first-time buyers, growing families, or investors alike.

The property features two generous double bedrooms and spacious living accommodation throughout. Upon entering, you are welcomed into a bright and airy living area, ideal for both relaxing and entertaining. Two versatile reception rooms provide flexibility for a separate dining area, home office, or additional lounge space to suit a variety of lifestyles.

To the rear, the property benefits from a substantial private garden, perfect for outdoor dining, gardening, or enjoying the warmer months with family and friends.

Ideally located close to local schools, amenities, and transport links, the home is well suited to family living and commuters alike. The property is also offered with a complete onward chain, helping to facilitate a smoother purchasing process.

Combining space, practicality, and a convenient location, this attractive home is one not to be missed.

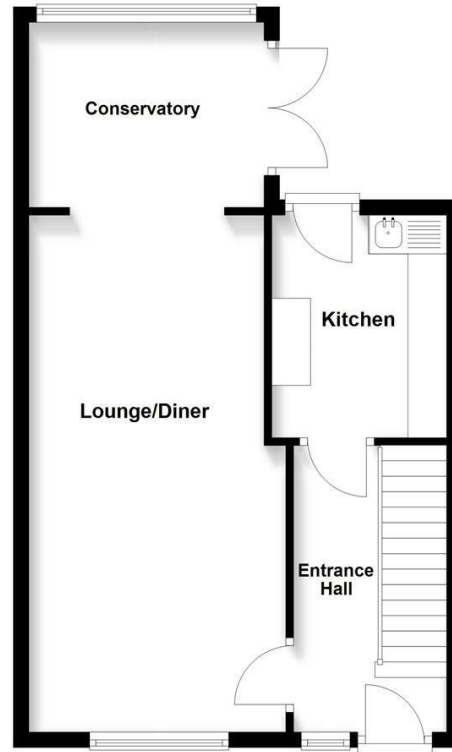
DIMENSIONS

- Lounge/Diner: 21'11 x 10'11
- Conservatory: 9'11 x 7'10
- Kitchen: 9'5 x 7'11
- Bedroom 1: 17'4 x 9'2
- Bedroom 2: 12'6 x 10'4
- Bathroom: 6'8 x 5'5

Energy Efficiency Rating		
	Current	Potential
Very energy efficient - lower running costs		
(92 plus) A		
(81-91) B		
(69-80) C		
(55-68) D		
	70	76

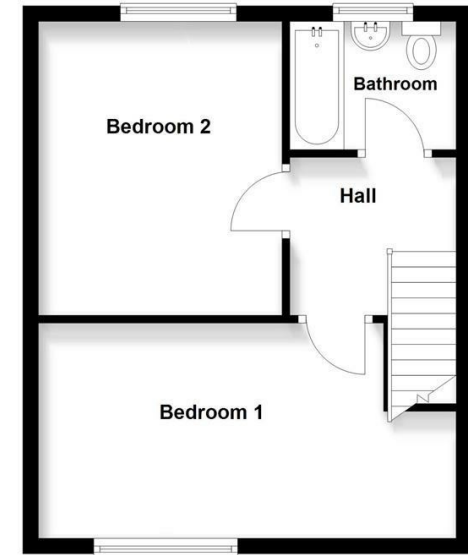
Ground Floor

Approx. 43.6 sq. metres (469.8 sq. feet)



First Floor

Approx. 36.1 sq. metres (388.2 sq. feet)



Total area: approx. 79.7 sq. metres (858.0 sq. feet)

IMPORTANT: We would like to inform prospective purchasers that these sales particulars have been prepared as a general guide only. A details survey has not been carried out, not the service, appliances and fittings tested. Room sizes should not be relied upon for furnishing purposes and are approximate. If floor plans are included, they are for guidance and illustration purposes only and may not be to scale. If there are any important matters likely to affect your decision to buy, please contact us before viewing the property.

Agent Hybrid

57 High Street, Stevenage, Hertfordshire, SG1 3AQ
 Tel: 01438 870673 - enquiries@agenthybrid.co.uk
 www.agenthybrid.co.uk

AGENT HYBRID