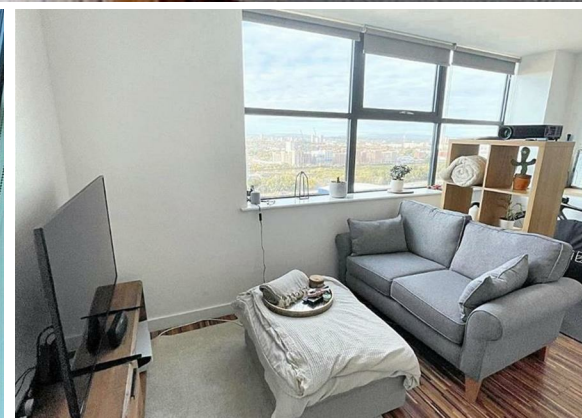
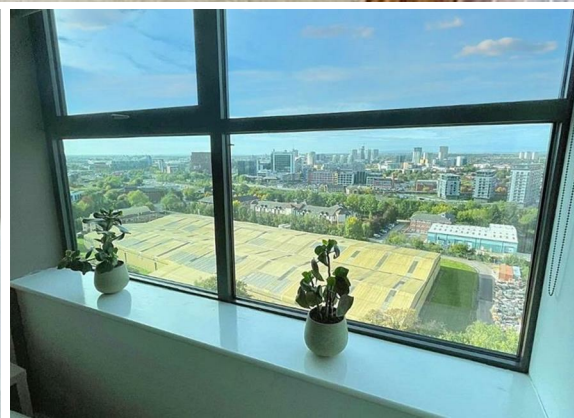




**1 Bed
Apartment
located in Old
Trafford**

Price £100,000



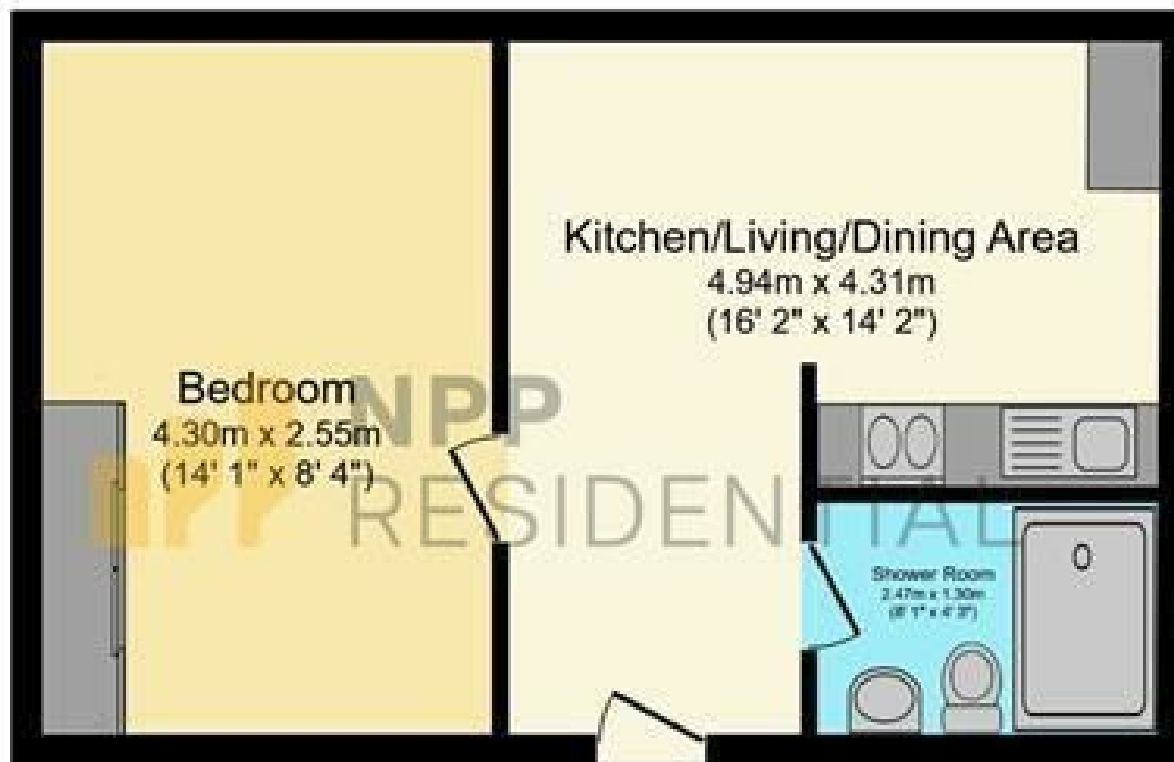
 **NPP
RESIDENTIAL**

DIRECTIONS

CONTACT

22 Lloyd Street
Manchester
M2 5WA

E: info@nppresidential.co.uk
T: 0161 639 0059
<https://nppresidential.co.uk/>



Floor Plan
Floor area 40.4 m² (435 sq.ft.)

TOTAL: 40.4 m² (435 sq.ft.)

This floor plan is for illustrative purposes only. It is not drawn to scale. Any measurements, floor areas (including any total floor area), volumes and orientations are approximate. All details are guaranteed, they cannot be relied upon for any purpose and do not form any part of any agreement. No liability is taken for any errors, omissions or misstatements. A party must rely upon its own inspection(s). Reserved by www.nppresidential.co.uk

EPC Rating:
Council Tax Band: B

Energy Efficiency Rating		Current	Potential
Very energy efficient - lower running costs			
(92 plus) A			
(81-91) B			
(69-80) C			
(55-68) D			
(39-54) E			
(21-38) F			
(1-20) G			
Not energy efficient - higher running costs			
England & Wales		EU Directive 2002/91/EC	