



Laystall Street, EC1R

£550,000

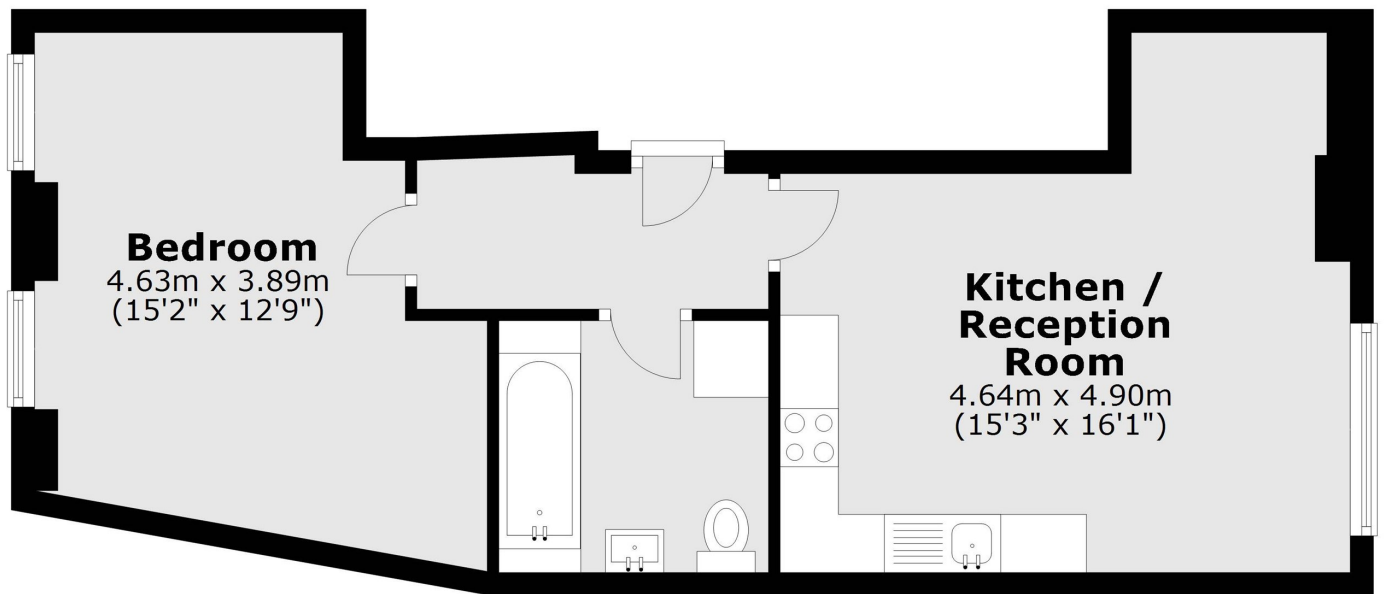
A well-presented one-bedroom apartment set on a modern residential building, ideally located on the border of Clerkenwell and Bloomsbury. The property is tiled throughout and offers a bright open-plan reception room with a fitted kitchen and integrated appliances, a spacious double bedroom with generous built-in wardrobes, and a contemporary fully tiled bathroom.

Ideally located on the border of Clerkenwell and Bloomsbury, the property is within walking distance of Chancery Lane, Farringdon and Russell Square stations, the Brunswick Centre (including Waitrose and Curzon cinema), and Exmouth Market. The area is well served by an excellent range of shops, cafés, bars and restaurants, with the City and West End both within easy reach.

Features

- One Double Bedroom
- Modern Interior
- Lift Access
- Secure Entrance
- Excellent Transport Links
- No Onward Chain

Laystall Street, London, EC1R



Total area: approx. 43.1 sq. metres (463.9 sq. feet)