

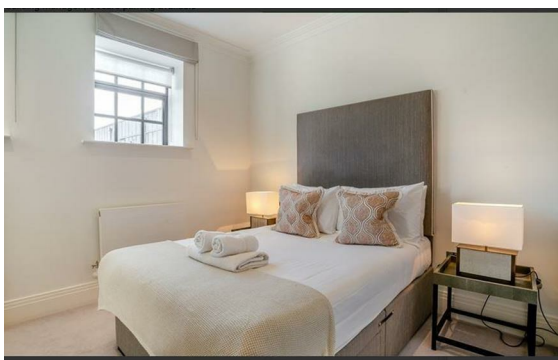
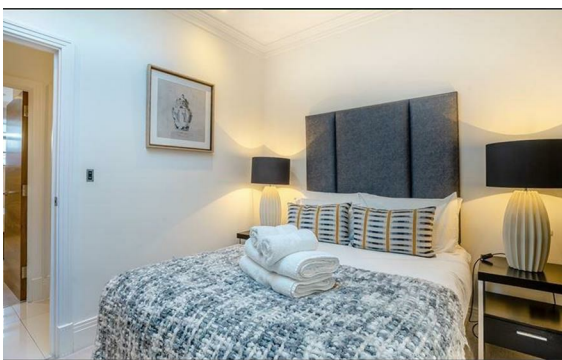


Rainville Road, Hammermith, London, W6

Rent £1,010 Per Month

2 Bed | 2 Bath | 1 Reception

Please call us on 020 7724 2233 or email us info@newingtonstates.com to book a viewing.



A brand new, interior-designed two-bedroom, two-bathroom second-floor apartment set within a gated, warehouse-style riverside development.

The property faces the courtyard and offers a bright open-plan kitchen and living area finished to a high specification.

Both bedrooms benefit from en-suite bathrooms, alongside a separate WC for guests. The apartment combines modern design with premium finishes, including smart home features and excellent transport connections nearby.

Energy Efficiency Rating: C

Agents Note: Whilst every care has been taken to prepare these particulars, they are for guidance purposes only. All measurements are approximate and are for general guidance purposes only and whilst every care has been taken to ensure their accuracy, they should not be relied upon and potential buyers/tenants are advised to recheck the measurements.

NEWINGTON
— ESTATES —

60 Upper Montagu Street

London

W1H 1SN

020 7724 2233

info@newingtonstates.com

<http://www.newingtonstates.com>