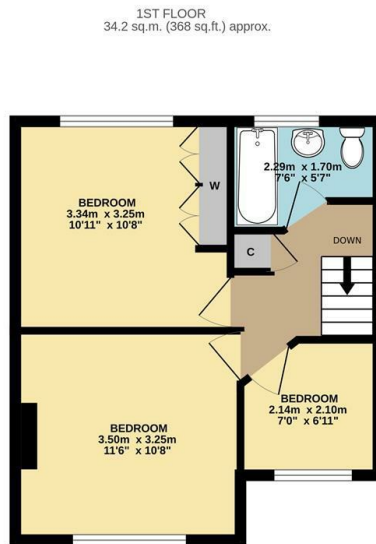


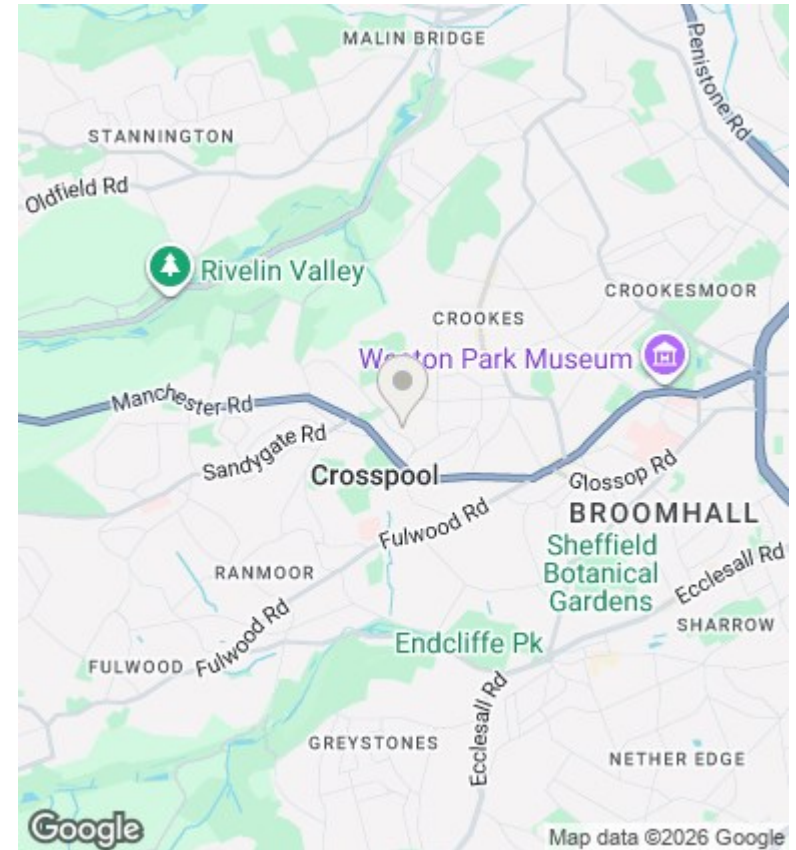
## 62 Tapton Bank, Sheffield, S10 5GH

Offers Over £350,000

- No onward chain
- Beautiful living room
- Good size south-east facing rear garden
- Fantastic cafes, shops and restaurants nearby
- Quiet cul-de-sac location
- Elegant open plan kitchen/dining room
- Long leasehold
- Off street parking
- Two double bedrooms and one single bedroom
- Short walk to local schools for all ages



TOTAL FLOOR AREA: 71.3 sq.m. (767 sq.ft.) approx.  
Measurements are approximate. Not to scale. Illustrative purposes only.  
Made with Metropix ©2026



## Directions

## Viewings

Viewings by arrangement only. Call 01142 687777 to make an appointment.

## Council Tax Band

C

## EPC Rating:

D

Energy Efficiency Rating		Current	Potential
<i>Very energy efficient - lower running costs</i>			
(92 plus)	A		
(81-91)	B		
(69-80)	C		78
(55-68)	D	65	
(39-54)	E		
(21-38)	F		
(1-20)	G		
<i>Not energy efficient - higher running costs</i>			
<b>England &amp; Wales</b>		EU Directive 2002/91/EC	