

# VISIOLI

REAL ESTATE

**80 Herrett Street, Aldershot, GU12  
4EE**



3 Bedrooms



1 Bathrooms



996 sq ft

**80 Herrett Street, Aldershot,  
GU12 4EE**

**£375,000**

## Description

This warm and inviting home is perfectly suited to first-time buyers or young families seeking a comfortable and well-maintained living space. Upon entering, the hallway leads to a cosy living room on the right, featuring a charming bay window and a characterful fireplace, creating a welcoming place to relax. Further along, the dining room provides an excellent space for everyday meals or entertaining guests, with potential to open through to the front reception room if desired. This flows into a conservatory area, currently used as a utility space, offering exciting scope to reconfigure or enhance the layout. The kitchen is positioned at the rear of the property and was fitted approximately five years ago. It offers a modern finish with a double oven, hob, and ample storage. Beyond the kitchen, you'll find a stylish family bathroom, also completed to a high standard. Upstairs, the property continues to impress with a practical and well-proportioned layout. To the right at the top of the stairs is a versatile room currently used as a home office, comfortably accommodating a single bed and wardrobe if required. To the left is a generous double bedroom with built-in storage. At the end of the landing sits the main bedroom, a bright and spacious room benefiting from dual windows that allow natural light to pour in, along with built-in wardrobes to maximise space. Externally, the garden is a standout feature. Well maintained and of a good size, it provides an enjoyable outdoor space throughout the year. A decking area at the rear is ideal for summer dining, relaxing, or entertaining.



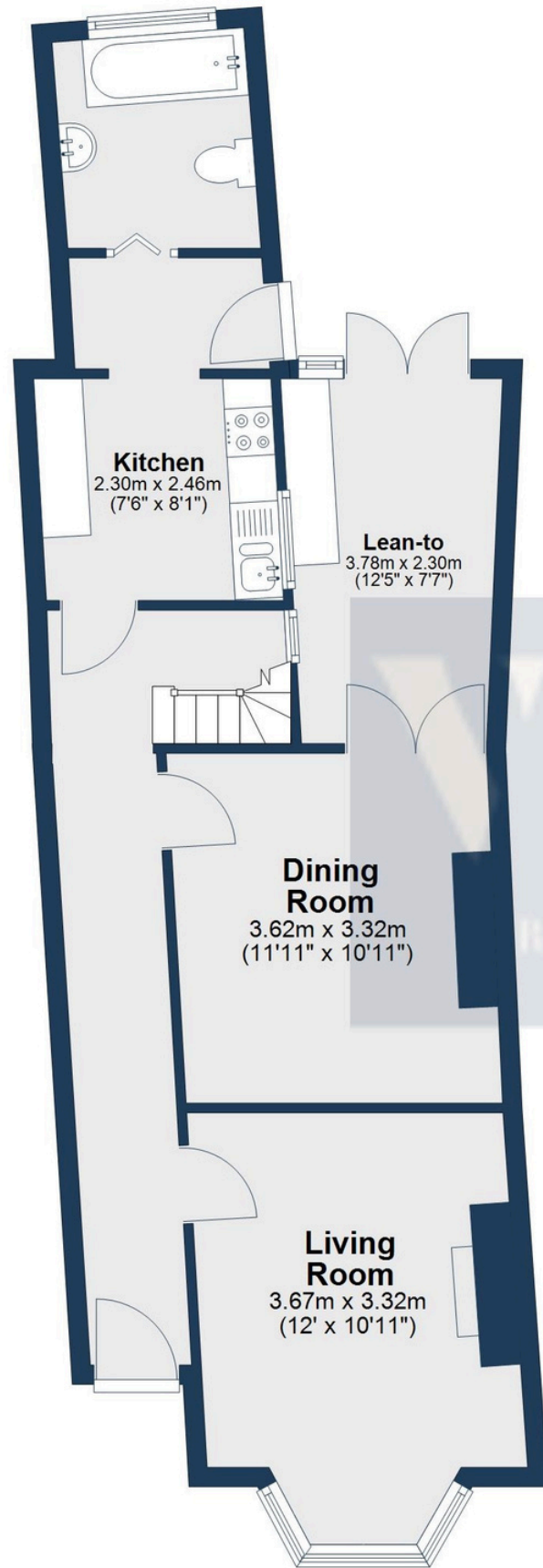




Herrett Street,  
Aldershot, GU12

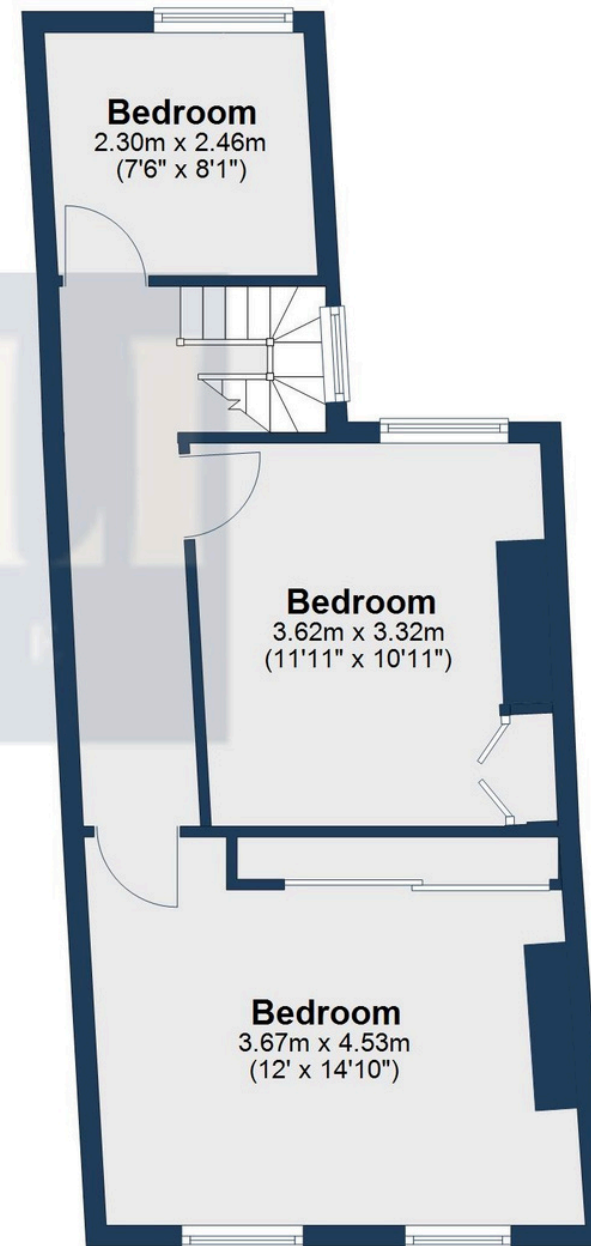
### Ground Floor

Main area: approx. 49.7 sq. metres (534.5 sq. feet)  
Plus lean-to, approx. 8.0 sq. metres (85.8 sq. feet)



### First Floor

Approx. 42.8 sq. metres (460.7 sq. feet)



Main area: Approx. 92.5 sq. metres (995.2 sq. feet)

Plus lean-to, approx. 8.0 sq. metres (85.8 sq. feet)

This plan has been produced by E Property Marketing for illustrative purposes only and should be used as such by any prospective purchaser. Whilst every effort has been made to ensure the accuracy of this plan, measurements of doors, windows, rooms, and other items are approximate. No responsibility is taken for any error, omission, or misstatement.

## Contact Us



01252210145



[visiolirealestate.co.uk](http://visiolirealestate.co.uk)



[sales@visiolirealestate.co.uk](mailto:sales@visiolirealestate.co.uk)